



TRANE®

LET'S GO BEYOND™



Products & Systems Solutions

Line Card

Trane West Tennessee



Water-Cooled Chillers



Cold Generator™ Model CGWR
Scroll Compressor Chiller 20 -75 Tons; R-410A



Series R™ Model RTWD
Helical Rotary Compressor - 80 thru 250 Tons; Dual refrigerant, R-134a or next gen R-513a



Optimus™ Model RTHD
Optional Variable Speed Helical Rotary Compressor - 150 thru 150-430 Tons; R-134a



Model CIGD
Scroll Modular chiller, 30-75T, up-to 10 unit array, ASHRAE 90.1-2016 compliant, 410A refrigerant, highly flexible



Model CCAR
Scroll Compressor Chiller with remote condensing; 20 - 75 Tons; R-410A



Series R™ Model RTUD
Compressor chiller with air-cooled condenser - 80 thru 250 Tons; R-134a

Centrifugal Chillers



Model HDWA Agility™ Chiller
175 to 425 ton - 60 Hz, 50 Hz using either R-513A or R-134A



CenTraVac™ Model CVHE Chiller
3-Stage Compressor - 120 thru 500 Tons; R-514A



CenTraVac™ Model CVHF Chiller
2-Stage Compressor - 325 thru 2000 Tons; R-514A



CenTraVac™ Model CVHH Chiller
Multi-stage, Dual Compressor, 900 thru 2000 Tons; R-1233zd



CenTraVac™ Series S™ Model CVHM Chiller
170 thru 360 Tons - 60 Hz, using R-514A



CenTraVac™ Model CVHL
ChillerCompressor for Elevated Chilled Water Temperatures - 400 thru 1800 Tons; R-514A



CenTraVac™ Model CDHF Chiller-
Multi-Stage Dual Compressor - 1500 thru 3950 Tons; R-514A



CenTraVac™ Model CVHH Chiller
Multi-stage, Dual Compressor, 900 thru 2000 Tons; R-1233zd



CenTraVac™ Model CDHH Chiller
Multi-stage, Dual Compressor 1800 thru 4200 Tons; R-1233zd

Air-Cooled Chillers



Model CGAM
Scroll Compressor - 20 thru 130 Tons; R-410A



Series R™ RTAC
Helical Rotary Chiller - 140 thru 500 Tons; R-134a



Sintesis™ Model RTAF
Variable Speed Helical Rotary Compressor - 115 thru 500 Tons; R-134a or next gen R-513A



Ascend™ Model ACR
150-300 Tons R-134a
Add Ascend(TM) model ACS 140-230 Tons R-410A



Ascend™ model ACS
140-230 Tons R-410A

Thermal Battery™ Cooling System



Modular Ice Bank® Energy Storage Tanks, Charging Chiller, Glycol Management System, Prepackaged Controls with Energy and Mode Dashboards, Completion Module including all Controls/Valves/Pumps/Plate Frame Heat Exchanger/Piping

Air Handling Systems



Performance Climate Changer Model UCCA
Indoor or Outdoor; 1500 thru 15000 CFM; 2" R-13 Foam Insulated Panels; Factory-Engineered & Mounted Controls



Performance Climate Changer Model CSAA
Indoor & Outdoor; 1500 thru 60000 CFM; 2" R-13 Foam Insulated Panels; Factory-Engineered & Mounted Controls



Performance Climate Changer™ Model PSCA
Indoor & Outdoor; 1,500 to 60,000 CFM, 2" or 3" R-13 Foam Insulated Panels, Variable Aspect Ratio



Trane Custom
Indoor & Outdoor; 1500 thru 200,000 CFM; -12.0 to +12.0 inches w.g; Thermal Performance with R-Values up to 25

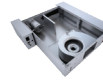
Terminal Products



Compact Vertical Blower Coil Model BCCD
Indoor; 800-2000 CFM; ECM Motors, Factory-Engineered & Mounted Controls



Blower Coil Model BCHD/BCVD
Indoor; 400 thru 3000 CFM; ECM motors; Factory-Engineered & Mounted Controls



CoolSense™ Terminal Unit
Up to 1300 CFM; Variable speed ECM or constant-fan speed; Tracer® UC400 controller (available with Air-Fi wireless)



VariTrane™ Model VC*F
Single Duct Variable Air Volume Boxes; 225 thru 8000 CFM



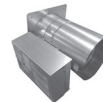
VariTrane Model VDDF
Dual Duct Variable Air Volume Boxes; 350 thru 4000 CFM



VariTrane Model VF**
Fan-Powered Variable Air Volume Boxes; 350 thru 4000 CFM; Parallel or Series Configuration



VariTrane Model LF**
Low Height Fan-Powered Variable Air Volume Boxes; 350 thru 4000 CFM; Parallel or Series Configuration



VariTrane Model VRRF
Round Inlet/Round Outlet RetroFit Variable Air Volume Boxes; 225 thru 4000 CFM



UniTrane™ Model FC*B
Fan Coil; 200 thru 1200 CFM



UniTrane™ Model FCV
Vertical High Rise Fan Coil Units
Vertical stack fan coil; 300 thru 1200 CFM



Force-Flo™ Model FF*B
Cabinet Heater; 200 thru 1200 CFM



Model VUVE
Vertical Unit Ventilators; 750 thru 1500 CFM



Model HUVH
Horizontal Unit Ventilators; 750 thru 2000 CFM



Model UHS/UHP
Propeller Unit Heaters; Hydronic & Steam

EcoWise

The Ingersoll Rand EcoWise™ portfolio of products designed to lower environmental impact with next-generation, low global warming potential (GWP) refrigerants and high-efficiency operation is part of our climate commitment to increase energy efficiency and reduce the greenhouse gas emissions (GHG) related to our operations and products.
All Trane Centrifugal Chillers, Series R RTAC (Air-Cooled) and Sintesis Model RTAF (Air-Cooled) are under the EcoWise portfolio of products.



The entire CenTraVac chiller portfolio earned third-party verification through its product-specific Type III Environmental Product Declaration (EPD) Registration: your assurance of a sustainable choice.



Trane also leads the industry with the most comprehensive chiller testing facilities. An AHRI Certified™ selection predicts the performance of your chiller based on laboratory testing. An AHRI verified test loop tests the actual performance of your chiller in conformance to the AHRI Standard. So, testing your chiller on an AHRI verified test loop before it leaves the factory ensures, through documentation, that your chiller's predicted performance matches the AHRI Certified selection, while also substantiating the pre-installation quality of the chiller, helping ensure a trouble-free startup. All Trane Centrifugal Chillers are myTEST certified.



**Model UHWA/UHAA/UHRA/
UHXA/UHEC/UHCA**
Electric Unit Heaters



Indoor Gas Heating Units
Unit Heaters & Duct Furnaces

Packaged Rooftops



Impact®
Cooling, Gas/Electric, & Heat Pump; 2
thru 5 Tons



**Precedent™ 17 Plus Packaged
Rooftops**
Cooling & Gas/Electric; 17 SEER;
3 thru 5 Tons



**Precedent™ &
Precedent™ with eFlex™**
Cooling, Gas/Electric, Heat Pumps
with Dual Fuel; Multiple Efficiency
Levels with eFlex Variable Speed
Technology; 3-10 Tons



Voyager™ & Voyager with eFlex
Cooling, Gas/Electric, Heat Pumps;
Multiple Efficiency Levels with eFlex
Variable Speed technology; 12.5-25
Tons



Foundation™
Cooling, Gas/Electric; Adapts to
Trane and Competitors Roof Curbs;
3 thru 25 Tons



Voyager™ Commercial
Cooling, Gas/Electric; eStage™
Multi-Stage Compressors,
27.5 thru 50 Tons



IntelliPak™ I
Cooling, Gas/Electric, Hot Water,
Steam; 20 thru 130 Tons; Available
with eFlex Variable Speed Compressor
available for 40 thru 75 Tons



IntelliPak™ II
Cooling, Gas/Electric, Hot Water,
Steam; Air-Cooled and Evapora-
tive Condenser; 90 thru 162 Tons;
Available with eFlex Variable Speed
Compressor available for 90-150 Tons



IntelliPak™ with Symbio™ 800
Cooling, Gas/Electric, 20 thru 75
Tons; Available with eFlex Variable
Speed Compressor

Dedicated Outdoor Air Rooftops



Horizon™ Model OA
Packaged Outdoor Air Units; Cooling,
Gas/Electric, Air-Source or
Water-Source Heat Pump; Heat
Recovery; 500 thru 25,000 CFM

Make-Up Air Gas Heating Units



Model DFIA/DFOA
Direct Fired Make-Up Air Units;
Indoor & Outdoor; 225 thru
9075 MBH



Model GSAA
Indoor Gas-Fired Make-Up Air
Handlers; Standard & High Efficiency;
100 thru 1200 MBH



Model GRAA
Outdoor Gas-Fired Make-Up Air
Handlers; 100 thru 1200 MBH



Model AHOA
Packaged Air Handlers; Cooling,
Make-Up Air, & Ventilation

Split Systems



Split Systems
Cooling & Heat Pump; Gas, Electric, or
Hot Water Heat; 1.5 thru 5 Tons



Odyssey™
Split Systems Cooling & Heat Pump;
Electric, Hot Water, Steam Heat;
6 thru 25 Tons



Condensing Unit
Model RAUJ Air-Cooled Condensing
Unit; Available with Remote Chiller
Evaporators; 20 thru 120 Tons



Condensers
Model CAUJ - Air-Cooled Condensers;
20 thru 120 Tons

Self-Contained Systems



IntelliPak™ Modular Series
Commercial, Self-Contained Units;
Water-Cooled or Air-Cooled; 20 thru
35 Tons



IntelliPak™ Signature Series
Commercial, Self-Contained Units; 20
thru 110 Tons (Water-Cooled);
25 thru 60 Tons (Air-Cooled)

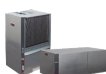
Water-Source Heat Pumps



Axiom™ Model GEH/GEV
1/2 thru 15 Tons (Horizontal); 1/2
thru 25 Tons (Vertical)



Axiom™ Model EXH/EXV
High-Efficiency; ECM Motors; 1.5 thru
6 Tons



Axiom™ Model DXH/DXV
High-Efficiency 2-Stage; ECM Motors;
2-Stage Compressor; 2 thru 6 Tons



Axiom™ Model VSH/VSV
High-Efficiency Variable Speed; ECM
Motors; Variable Speed Compressor;
2 thru 5 Tons



Axiom™ Model GEC
High-Efficiency Console; 1/2 thru 1.5
Tons



Axiom™ Model GET
High-Efficiency Vertical Stack; 3/4 thru
3 Tons



Axiom™ Model EXW
Water to Water 5 thru 20 Tons

Trane® / Mitsubishi Electric Ductless Solutions



M-Series, P-Series Outdoor Units
9-42 MBh Hyperheat H2i Energy Star
Rated 6-42MBh



Convertible AHU
12,18,24,30,36,42 MBh



4 way Cassette
9,12,15,18,24,36,42



Floor Mounted
9,12,15,18



High Wall
9,12,15,18,24,30,36



Ceiling Recessed
9,12,18



Horizontal Ducted
9,12,15,18,24,30,36,42



Ceiling Suspended
24,36,42

Multi Zone - MZ Series



MXZ-Series
20-60 MBh Hyperheat H2i
Energy Star Rated



Convertible AHU
12,18,24,30,36 MBh



4 way Cassette
9,12,15,18,24,36,42



Floor Mounted
9,12,15,18



High Wall
9,12,15,18,24



Ceiling Recessed
9,12,18



Horizontal Ducted
9,12,15,18,24,30,36



Ceiling Suspended
24

Trane® / Mitsubishi Electric Variable Refrigerant Flow CityMulti® Outdoor Units

Mini

Mini Outdoor VRF

3, 4, 5 tons; up to 18 SEER
(Available with any 12 indoor unit combination that matches tonnage)



Air

Air-Source Outdoor VRF Unit

6, 8, 10, 12 and 14 tons, expandable up to 30 tons; up to 28 IEER



Hyper-Heating (H2i®) Outdoor VRF Unit

High heat outdoor unit; up to 16 tons. 100% heating capacity at -4 degrees.



Water-Source VRF Unit

6, 8, 10, 12, 14, 16, 18, and 20 tons, expandable up to 30 tons; up to 30.1 IEER



CityMulti® Indoor Units

Floor Standing Cabinet/Concealed

6,8,12,15,18,24 MBh



DOAS w/wo Reheat

1200 CFM



Hydronic Heat Exchanger

36,72



Convertible AHU

12,18,24,30,36,48,54 MBh



4 way Cassette

8,12,15,18,24,36,48



Floor Mounted

9,12,15,18



High Wall

6,8,12,15,18,24,30



Ceiling Recessed

6,8,12,15



Horizontal Ducted

6,8,12,15,18,24,30,36,48,54,72,96



Ceiling Suspended

15,24,30,36



Trane Systems

CoolSense™ Integrated Outdoor Air System

A prepackaged HVAC system design that combines a dedicated outdoor air system (DOAS) with sensible cooling and heating terminals in the zones



Ice-Enhanced Air-Cooled Chiller Plant

Simplifies the design and implementation of thermal storage systems with eight standard configurations for air-cooled chillers, ice tanks and customizable system controls



Intelligent Variable Air (Chilled-Water)

Pre-packaged, variable-air HVAC system designed around Trane air-handling units that delivers high-performance heating, cooling, and ventilation for multiple zones



Intelligent Variable Air (DX Systems)

Pre-packaged, variable-air HVAC rooftop system design concept that delivers high-performance heating, cooling, and ventilation for multiple zones



Zoned Rooftop Systems

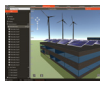
Pre-engineered range of rooftop systems that deliver cost effective comfort, energy efficiency and are easy to install and operate. The system types range from single-zone to multiple-zone configurations with various options for airflow modulation, cooling and heating, and ventilation control



Design & Analysis Software Tools

TRACE® Family of Software

Trane software packages provide equipment sizing, energy and economic analysis for all your building design needs



Design Tools

Duct Designer, Pipe Designer Trane Acoustics Program (TAP™), Engineering Toolbox, BIM and Selection tools



Trane Building Automation Systems

Tracer® SC+

Scalable web-based building automation system solution



Tracer Concierge™

Light commercial control system



Pivot™ Smart Thermostat

Wi-Fi & Ethernet thermostat for light commercial applications



Trane Equipment & Unit Controls

Airside Controllers

(UC210, UC400, UC600) - Terminal Unit & AHU



Chiller Controllers

(AdaptiView with UC800, CH530)



Symbio(TM) 800 Controller

IntelliPak with Symbio(TM) 800, multiple protocol support, remote connectivity.



Variable Frequency Drives

Complete range from 1-1/2 to 1350 HP, factory mounted or field installed for new or retrofit applications



Power and Energy Meters

Easy to install and cost effective power and energy monitoring devices



Factory & Field

Mounted BACnet & LonTalk® Unit Controllers, Integrates with BACnet MSTP, LonTalk Certified, BACnet/IP, Modbus® Protocols



Trane Air-Fi® Wireless

Wireless Sensors

Wireless sensing for temperature, humidity, CO2 & occupancy using BACnet/Zigbee®



Wireless Communications

Wireless system communications leverage Air-Fi Wireless technology to communicate between system and unit controllers



Trane Building Management Systems & User Interfaces

Tracer® Ensemble™

Enterprise level building management software



Tracer® Synchrony™

Web-based facility management software



Tracer® 10" Display

Occupant user interface for non-technical user



Tracer® Mobile Apps

Occupant Suite, Operator Suite



Consulting Engineer Portal



Trane offers expert HVAC systems, solutions, and support for every stage of a building lifecycle. Quick links to design and analysis tools, BIM drawings, prepackaged solutions, and energy analysis tools. Visit trane.com, select Consulting Engineer

Trane Creative Solutions



Customized Trane Equipment Modifications Including Multizone Replacements, Water-Side Economizer Coils for Air-Cooled Chillers, Packaged Air-Cooled Ice Storage Systems; Acoustical Attenuation

Trane Energy Management Systems and Services



Trane Intelligent Services

Aggregates data collected in a building. Provides tools to make real-time, near term, and long term decisions that maximize the way buildings are managed and maintained.

Energy Services



We partner with our clients to understand how energy impacts their business and sustainability goals. Leveraging deep expertise and cutting edge technology, we help optimize energy purchasing strategies, energy sourcing, energy storage, consumption, and overall network efficiency with validated results.

Thermal Energy Storage



Optimizes energy usage by storing excess or inexpensive energy; Avoids costly peak demand spikes; Earns demand response revenue.

Trane Rental Services



Water-Cooled Chillers, Air-Cooled Chillers, Temporary Power, Cooling Towers, Packaged A/C Units, Air Handlers; Portable A/C Units.

Trane Building Services



Reduce operating costs and extend the life of your equipment with planned maintenance from Trane.



Represented Products



Modular chillers, magnetic bearing chillers, optimized chiller-plant controllers
www.arcticchillergroup.com



Comprehensive Air Purification and Corrosion Protection
www.bioclimatic.com



Ice Storage Tanks, Off Peak Cooling, Plate & Frame Heat Exchangers
www.calmac.com



Canariis Corporation; UL Listed Packaged Systems
www.canariis.com



Industrial and Commercial Humidifiers
www.carelusa.com



Custom Air Handling Units, Roof Top Packaged Units, Custom Coils
www.energylabs.com



Specialty Process Chillers
www.filtrine.com



Ferguson HVAC Heating & Cooling, Coils exclusive for HVAC
www.firstco.com



Air Cleaning System combining technologies to control particles, gases and biological contaminants
www.genesisair.com



Custom Air Handlers
www.innoventair.com



Custom HVAC Units, HVAC Coatings and HVAC Modifications
www.mjcinc.com



Humidity & Climate Control Technologies
www.munters.com



Pool Room, Natatorium Units
www.poolpak.com



Direct-fired and indirect-fired heaters, cooling systems and media
www.powrmatic.com



Energy Recovery Ventilators
www.renewaire.com



Make-Up Air Systems
www.ruppams.com



Air Management Solutions
www.semcohvac.com



Rooftop Duct Furnaces, Evaporative Cooling Units, Packaged HVAC Rooftop, Indoor Make-Up Air Units
www.sterlinghvac.com



Energy efficient temperature and humidity management technology, specifically for mission critical and data center applications
www.stulz-usa.com



Vertical Hi-Rise Fan Coil Units
www.temspec.com



Controllers, Monitors, & Control Panels
www.triatek.com



Heating Solutions
www.tutco.com



High-Percentage Outdoor Air Packaged Rooftop Ventilation Systems
www.valentair.com



Trane West Tennessee

Trane is an HVAC and energy solutions company. We create high-performing environments through our use of innovative technology and systems that optimize performance and maximize efficiencies.

ABOUT US

Trane has been making buildings better for over 100 years, and we have been serving the Tennessee and Mississippi communities since 1925. We have offices in Memphis, Nashville, Knoxville, Chattanooga, and Jackson, MS with over 270 associates serving these communities. The Nashville Trane Office was opened in 1925, under the Leadership of Cliff Roberts. Cliff retired in 1969 and was succeeded by John Tudor who owned and managed the Nashville franchise until selling it to Trane in 1995. When Trane purchased the franchise, the Nashville office became a Trane Commercial Sales Office (CSO), wholly owned and operated by Trane. In 2004, the Knoxville, Nashville, Memphis and Chattanooga offices were combined under one district. In 2015, Trane opened a CSO in Jackson, MS creating the Tennessee Mississippi District of Trane.

APPROACH

We take a creative approach to every project; treating each project uniquely so we can collaborate to understand objectives and goals. Trane delivers outcomes; we start from the beginning and follow the process through. Plus, we always keep sustainability and energy efficiencies top of mind.

SERVICE & SOLUTIONS

Our capabilities include commercial systems, energy services & solutions, contracting, controls/building automation, rentals and service.



COMMERCIAL SYSTEMS

We offer the full spectrum of HVAC solutions. Trane offers a solution for every unique HVAC need.

- Chillers, Unitary
- Air Handling Systems
- Terminal Devices
- Ductless
- Dedicated Air Systems & Components
- Thermal Ice Storage



ENERGY SERVICES AND SOLUTIONS

From cost & energy efficiencies to sustainability, we offer a portfolio of energy services and solutions to help building owners impact their business.



RENTAL SERVICES

We offer a variety of equipment to help you with your temporary heating and cooling needs. Whether for seasonal outages or to sustain peak support times, Trane temporary chillers, air conditioning units and portable generators are ideal for your unique situation.



CONTRACTING

Trane's full service contracting organizations provide start-to-finish solutions to any project. Our reliable services through project management, equipment and installation deliver a level of confidence to our customers that is unmatched by other suppliers.



CONTROLS/BUILDING AUTOMATION

Trane technology provides an intuitive, mobile platform that gives you the power and flexibility to manage your buildings more efficiently, thereby reducing cost and providing a better indoor environment and smaller environmental footprint.



BUILDING SERVICES

Our engineers and technical specialists can provide the support you need to help you achieve the most cost-effective performance from your system. From the first day of new equipment installation through the life span of your equipment, we're here for you.

Sales Offices: TN/MS District**Parts Locations: TN/MS District****Jackson**

851 Wilson Drive, # A
Ridgeland, MS 39157
601.718.5800

Memphis

1775 Pyramid Place, # 100
Memphis, TN 38132
901.345.6000

Nashville

601 Grassmere Park Drive, # 10
Nashville, TN 37211
615.242.0311

Knoxville

5220 Middlebrook Pike South
Knoxville, TN 37921
865.588.0607

Chattanooga

6138 Preservation Drive, # 600
Chattanooga, TN 37416
423.296.1506

Jonesboro, AR

2905 Caprice Parkway
Jonesboro, AR 72404
870.268.0281

Jackson, MS

851 Wilson Drive, Suite B
Ridgeland, MS 39157
601.718.5741

Memphis

4140 Getwell Road
Memphis, TN 38118
901.254.7348

Memphis

5222 Pleasant View Road
Memphis, TN 38134
901.345.6091

Nashville

601 Grassmere Park Drive, # 26
Nashville, TN 37211
615.242.2300

Nashville DSO

1654 Elm Hill Pike, # 101
Nashville, TN 37210
615.932.6363

Jackson, TN

138 Commerce Center Circle, #100
Jackson, TN 38301
731.424.0200

Knoxville

1609 Amherst Road
Knoxville, TN 37909
865.584.6412

Chattanooga

4167 South Creek Road
Chattanooga, TN 37406
423.296.9993

Visit tranetnms.com to learn more.



Ingersoll Rand (NYSE:IR) advances the quality of life by creating comfortable, sustainable and efficient environments. Our people and our family of brands—including Club Car®, Ingersoll Rand®, Thermo King® and Trane®—work together to enhance the quality and comfort of air in homes and buildings; transport and protect food and perishables; and increase industrial productivity and efficiency. We are a \$14 billion global business committed to a world of sustainable progress and enduring results.



ingersollrand.com