



**TRANE®**

**LET'S GO BEYOND™**



# Products & Systems Solutions

Line Card

*Trane Jackson*



## Water-Cooled Chillers



**Cold Generator™ Model CGWR**  
Scroll Compressor Chiller 20 -75 Tons; R-410A



**Series R™ Model RTWD**  
Helical Rotary Compressor - 80 thru 250 Tons; Dual refrigerant, R-134a or next gen R-513a



**Optimus™ Model RTHD**  
Optional Variable Speed Helical Rotary Compressor - 150 thru 150-430 Tons; R-134a



**Model CIDC**  
Scroll Modular chiller, 30-75T, up-to 10 unit array, ASHRAE 90.1-2016 compliant, 410A refrigerant, highly flexible



**Model CCAR**  
Scroll Compressor Chiller with remote condensing; 20 - 75 Tons; R-410A



**Series R™ Model RTUD**  
Compressor chiller with air-cooled condenser - 80 thru 250 Tons; R-134a

## Centrifugal Chillers



**Model HDWA Agility™ Chiller**  
175 to 425 ton – 60 Hz, 50 Hz using either R-513A or R-134A



**CenTraVac™ Model CVHE Chiller**  
3-Stage Compressor - 120 thru 500 Tons; R-514A



**CenTraVac™ Model CVHF Chiller**  
2-Stage Compressor - 325 thru 2000 Tons; R-514A



**CenTraVac™ Model CVHH Chiller**  
Multi-stage, Dual Compressor, 900 thru 2000 Tons; R-1233zd



**CenTraVac™ Series S™ Model CVHM Chiller**  
170 thru 360 Tons - 60 Hz, using R-514A



**CenTraVac™ Model CVHL**  
Chiller/Compressor for Elevated Chilled Water Temperatures - 400 thru 1800 Tons; R-514A



**CenTraVac™ Model CDHF Chiller**  
Multi-Stage Dual Compressor - 1500 thru 3950 Tons; R-514A



**CenTraVac™ Model CVHH Chiller**  
Multi-stage, Dual Compressor, 900 thru 2000 Tons; R-1233zd



**CenTraVac™ Model CDHH Chiller**  
Multi-stage, Dual Compressor 1800 thru 4200 Tons; R-1233zd

## Air-Cooled Chillers



**Model CGAM**  
Scroll Compressor - 20 thru 130 Tons; R-410A



**Series R™ RTAC**  
Helical Rotary Chiller - 140 thru 500 Tons; R-134a



**Sintesis™ Model RTAF**  
Variable Speed Helical Rotary Compressor - 115 thru 500 Tons; R-134a or next gen R-513A



**Ascend™ Model ACR**  
150-300 Tons R-134a  
Add Ascend(TM) model ACS 140-230 Tons R-410A



**Ascend™ model ACS**  
140-230 Tons R-410A

## Thermal Battery™ Cooling System



Modular Ice Bank® Energy Storage Tanks, Charging Chiller, Glycol Management System, Prepackaged Controls with Energy and Mode Dashboards, Completion Module including all Controls/Valves/Pumps/Plate Frame Heat Exchanger/Piping

## Air Handling Systems



**Performance Climate Changer Model UCCA**  
Indoor or Outdoor; 1500 thru 15000 CFM; 2" R-13 Foam Insulated Panels; Factory-Engineered & Mounted Controls



**Performance Climate Changer Model CSAA**  
Indoor & Outdoor; 1500 thru 60000 CFM; 2" R-13 Foam Insulated Panels; Factory-Engineered & Mounted Controls



**Performance Climate Changer™ Model PSCA**  
Indoor & Outdoor; 1,500 to 60,000 CFM, 2" or 3" R-13 Foam Insulated Panels, Variable Aspect Ratio



**Trane Custom**  
Indoor & Outdoor; 1500 thru 200,000 CFM; -12.0 to +12.0 inches w.g; Thermal Performance with R-Values up to 25

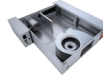
## Terminal Products



**Compact Vertical Blower Coil Model BCCD**  
Indoor; 800-2000 CFM; ECM Motors, Factory-Engineered & Mounted Controls



**Blower Coil Model BCHD/BCVD**  
Indoor; 400 thru 3000 CFM; ECM motors; Factory-Engineered & Mounted Controls



**CoolSense™ Terminal Unit**  
Up to 1300 CFM; Variable speed ECM or constant-fan speed; Tracer® UC400 controller (available with Air-Fi wireless)



**VariTrane™ Model VC\*F**  
Single Duct Variable Air Volume Boxes; 225 thru 8000 CFM



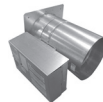
**VariTrane Model VDDF**  
Dual Duct Variable Air Volume Boxes; 350 thru 4000 CFM



**VariTrane Model V\*\*F**  
Fan-Powered Variable Air Volume Boxes; 350 thru 4000 CFM; Parallel or Series Configuration



**VariTrane Model L\*\*F**  
Low Height Fan-Powered Variable Air Volume Boxes; 350 thru 4000 CFM; Parallel or Series Configuration



**VariTrane Model VRRF**  
Round Inlet/Round Outlet RetroFit Variable Air Volume Boxes; 225 thru 4000 CFM



**UniTrane™ Model FC\*B**  
Fan Coil; 200 thru 1200 CFM



**UniTrane™ Model FCV**  
Vertical High Rise Fan Coil Units Vertical stack fan coil; 300 thru 1200 CFM



**Force-Flo™ Model FF\*B**  
Cabinet Heater; 200 thru 1200 CFM



**Model VUVE**  
Vertical Unit Ventilators; 750 thru 1500 CFM



**Model HUVH**  
Horizontal Unit Ventilators; 750 thru 2000 CFM



**Model UHS/UHP**  
Propeller Unit Heaters; Hydronic & Steam

**EcoWise**

The Ingersoll Rand EcoWise™ portfolio of products designed to lower environmental impact with next-generation, low global warming potential (GWP) refrigerants and high-efficiency operation is part of our climate commitment to increase energy efficiency and reduce the greenhouse gas emissions (GHG) related to our operations and products. All Trane Centrifugal Chillers, Series R RTAC (Air-Cooled) and Sintesis Model RTAF (Air-Cooled) are under the EcoWise portfolio of products.



The entire CenTraVac chiller portfolio earned third-party verification through its product-specific Type III Environmental Product Declaration (EPD) Registration: your assurance of a sustainable choice.



Trane also leads the industry with the most comprehensive chiller testing facilities. An AHRI Certified™ selection predicts the performance of your chiller based on laboratory testing. An AHRI verified test loop tests the actual performance of your chiller in conformance to the AHRI Standard. So, testing your chiller on an AHRI verified test loop before it leaves the factory ensures, through documentation, that your chiller's predicted performance matches the AHRI Certified selection, while also substantiating the pre-installation quality of the chiller, helping ensure a trouble-free startup. All Trane Centrifugal Chillers are myTEST certified.



**Model UHWA/UHAA/UHRA/  
UHXA/UHEC/UHCA**  
Electric Unit Heaters



**Indoor Gas Heating Units**  
Unit Heaters & Duct Furnaces

### Packaged Rooftops



**Impack®**  
Cooling, Gas/Electric, & Heat Pump; 2 thru 5 Tons



**Precedent™ 17 Plus Packaged Rooftops**  
Cooling & Gas/Electric; 17 SEER; 3 thru 5 Tons



**Precedent™ & Precedent™ with eFlex™**  
Cooling, Gas/Electric, Heat Pumps with Dual Fuel; Multiple Efficiency Levels with eFlex Variable Speed Technology; 3-10 Tons



**Voyager™ & Voyager with eFlex**  
Cooling, Gas/Electric, Heat Pumps; Multiple Efficiency Levels with eFlex Variable Speed technology; 12.5-25 Tons



**Foundation™**  
Cooling, Gas/Electric; Adapts to Trane and Competitors Roof Curbs; 3 thru 25 Tons



**Voyager™ Commercial**  
Cooling, Gas/Electric; eStage™ Multi-Stage Compressors, 27.5 thru 50 Tons



**IntelliPak™ I**  
Cooling, Gas/Electric, Hot Water, Steam; 20 thru 130 Tons; Available with eFlex Variable Speed Compressor available for 40 thru 75 Tons



**IntelliPak™ II**  
Cooling, Gas/Electric, Hot Water, Steam; Air-Cooled and Evaporative Condenser; 90 thru 162 Tons; Available with eFlex Variable Speed Compressor available for 90-150 Tons



**IntelliPak™ with Symbio™ 800**  
Cooling, Gas/Electric, 20 thru 75 Tons; Available with eFlex Variable Speed Compressor

### Dedicated Outdoor Air Rooftops



**Horizon™ Model OA**  
Packaged Outdoor Air Units; Cooling, Gas/Electric, Air-Source or Water-Source Heat Pump; Heat Recovery; 500 thru 25,000 CFM

### Make-Up Air Gas Heating Units



**Model DFIA/DFOA**  
Direct Fired Make-Up Air Units; Indoor & Outdoor; 225 thru 9075 MBH



**Model GSAA**  
Indoor Gas-Fired Make-Up Air Handlers; Standard & High Efficiency; 100 thru 1200 MBH



**Model GRAA**  
Outdoor Gas-Fired Make-Up Air Handlers; 100 thru 1200 MBH



**Model AHOA**  
Packaged Air Handlers; Cooling, Make-Up Air, & Ventilation

### Split Systems



**Split Systems**  
Cooling & Heat Pump; Gas, Electric, or Hot Water Heat; 1.5 thru 5 Tons



**Odyssey™**  
Split Systems Cooling & Heat Pump; Electric, Hot Water, Steam Heat; 6 thru 25 Tons



**Condensing Unit**  
Model RAUJ Air-Cooled Condensing Unit; Available with Remote Chiller Evaporators; 20 thru 120 Tons



**Condensers**  
Model CAUJ - Air-Cooled Condensers; 20 thru 120 Tons

### Self-Contained Systems



**IntelliPak™ Modular Series**  
Commercial, Self-Contained Units; Water-Cooled or Air-Cooled; 20 thru 35 Tons

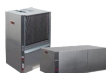


**IntelliPak™ Signature Series**  
Commercial, Self-Contained Units; 20 thru 110 Tons (Water-Cooled); 25 thru 60 Tons (Air-Cooled)

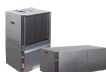
### Water-Source Heat Pumps



**Axiom™ Model GEH/GEV**  
1/2 thru 15 Tons (Horizontal); 1/2 thru 25 Tons (Vertical)



**Axiom™ Model EXH/EXV**  
High-Efficiency; ECM Motors; 1.5 thru 6 Tons



**Axiom™ Model DXH/DXV**  
High-Efficiency 2-Stage; ECM Motors; 2-Stage Compressor; 2 thru 6 Tons



**Axiom™ Model VSH/VSV**  
High-Efficiency Variable Speed; ECM Motors; Variable Speed Compressor; 2 thru 5 Tons



**Axiom™ Model GEC**  
High-Efficiency Console; 1/2 thru 1.5 Tons



**Axiom™ Model GET**  
High-Efficiency Vertical Stack; 3/4 thru 3 Tons



**Axiom™ Model EXW**  
Water to Water 5 thru 20 Tons

### Trane® / Mitsubishi Electric Ductless Solutions



**M-Series, P-Series Outdoor Units**  
9-42 MBh Hyperheat H2i Energy Star Rated 6-42MBh



**Convertible AHU**  
12,18,24,30,36,42 MBh



**4 way Cassette**  
9,12,15,18,24,36,42



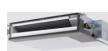
**Floor Mounted**  
9,12,15,18



**High Wall**  
9,12,15,18,24,30,36



**Ceiling Recessed**  
9,12,18

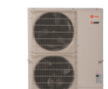


**Horizontal Ducted**  
9,12,15,18,24,30,36,42



**Ceiling Suspended**  
24,36,42

### Multi Zone - MZ Series



**MXZ-Series**  
20-60 MBh Hyperheat H2i Energy Star Rated



**Convertible AHU**  
12,18,24,30,36 MBh



**4 way Cassette**  
9,12,15,18,24,36,42



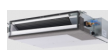
**Floor Mounted**  
9,12,15,18



**High Wall**  
9,12,15,18,24



**Ceiling Recessed**  
9,12,18



**Horizontal Ducted**  
9,12,15,18,24,30,36



**Ceiling Suspended**  
24

## Trane® / Mitsubishi Electric Variable Refrigerant Flow CityMulti® Outdoor Units

### Mini



#### Mini Outdoor VRF

3, 4, 5 tons; up to 18 SEER  
(Available with any 12 indoor unit combination that matches tonnage)

### Air



#### Air-Source Outdoor VRF Unit

6, 8, 10, 12 and 14 tons,  
expandable up to 30 tons;  
up to 28 IEER



#### Hyper-Heating (H2i) Outdoor VRF Unit

High heat outdoor unit; up to 16 tons. 100% heating capacity at -4 degrees.



#### Water-Source VRF Unit

6, 8, 10, 12, 14, 16, 18, and 20 tons,  
expandable up to 30 tons; up to 30.1 IEER

## CityMulti® Indoor Units



#### Floor Standing Cabinet/Concealed

6,8,12,15,18,24 MBh



#### DOAS w/wo Reheat

1200 CFM



#### Hydronic Heat Exchanger

36,72



#### Convertible AHU

12,18,24,30,36,48,54 MBh



#### 4 way Cassette

8,12,15,18,24,36,48



#### Floor Mounted

9,12,15,18



#### High Wall

6,8,12,15,18,24,30



#### Ceiling Recessed

6,8,12,15



#### Horizontal Ducted

6,8,12,15,18,24,30,36,48,54,72,96



#### Ceiling Suspended

15,24,30,36

## Trane Systems



### CoolSense™ Integrated Outdoor Air System

A prepackaged HVAC system design that combines a dedicated outdoor air system (DOAS) with sensible cooling and heating terminals in the zones



### Ice-Enhanced Air-Cooled Chiller Plant

Simplifies the design and implementation of thermal storage systems with eight standard configurations for air-cooled chillers, ice tanks and customizable system controls



### Intelligent Variable Air (Chilled-Water)

Pre-packaged, variable-air HVAC system designed around Trane air-handling units that delivers high-performance heating, cooling, and ventilation for multiple zones



### Intelligent Variable Air (DX Systems)

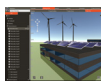
Pre-packaged, variable-air HVAC rooftop system design concept that delivers high-performance heating, cooling, and ventilation for multiple zones



### Zoned Rooftop Systems

Pre-engineered range of rooftop systems that deliver cost effective comfort, energy efficiency and are easy to install and operate. The system types range from single-zone to multiple-zone configurations with various options for airflow modulation, cooling and heating, and ventilation control

## Design & Analysis Software Tools



### TRACE® Family of Software

Trane software packages provide equipment sizing, energy and economic analysis for all your building design needs



### Design Tools

Duct Designer, Pipe Designer Trane Acoustics Program (TAP™), Engineering Toolbox, BIM and Selection tools

## Trane Building Automation Systems



### Tracer® SC+

Scalable web-based building automation system solution



### Tracer Concierge™

Light commercial control system



### Pivot™ Smart Thermostat

Wi-Fi & Ethernet thermostat for light commercial applications

## Trane Equipment & Unit Controls



### Airside Controllers

(UC210, UC400, UC600) - Terminal Unit & AHU



### Chiller Controllers

(AdaptiView with UC800, CH530)



### Symbio(TM) 800 Controller

IntelliPak with Symbio(TM) 800, multiple protocol support, remote connectivity.



### Variable Frequency Drives

Complete range from 1-1/2 to 1350 HP, factory mounted or field installed for new or retrofit applications



### Power and Energy Meters

Easy to install and cost effective power and energy monitoring devices



### Factory & Field

Mounted BACnet & LonTalk® Unit Controllers, Integrates with BACnet MSTP, LonTalk Certified, BACnet/IP, Modbus® Protocols

## Trane Air-Fi® Wireless



### Wireless Sensors

Wireless sensing for temperature, humidity, CO2 & occupancy using BACnet/Zigbee®



### Wireless Communications

Wireless system communications leverage Air-Fi Wireless technology to communicate between system and unit controllers

## Trane Building Management Systems & User Interfaces



### Tracer® Ensemble™

Enterprise level building management software



### Tracer® Synchrony™

Web-based facility management software



### Tracer® 10" Display

Occupant user interface for non-technical user



### Tracer® Mobile Apps

Occupant Suite, Operator Suite

## Consulting Engineer Portal



Trane offers expert HVAC systems, solutions, and support for every stage of a building lifecycle. Quick links to design and analysis tools, BIM drawings, prepackaged solutions, and energy analysis tools. Visit [trane.com](http://trane.com), select Consulting Engineer

## Trane Creative Solutions



Customized Trane Equipment Modifications Including Multizone Replacements, Water-Side Economizer Coils for Air-Cooled Chillers, Packaged Air-Cooled Ice Storage Systems; Acoustical Attenuation

## Trane Energy Management Systems and Services



**Trane Intelligent Services**  
Aggregates data collected in a building. Provides tools to make real-time, near term, and long term decisions that maximize the way buildings are managed and maintained.

## Energy Services



We partner with our clients to understand how energy impacts their business and sustainability goals. Leveraging deep expertise and cutting edge technology, we help optimize energy purchasing strategies, energy sourcing, energy storage, consumption, and overall network efficiency with validated results.

## Thermal Energy Storage



Optimizes energy usage by storing excess or inexpensive energy; Avoids costly peak demand spikes; Earns demand response revenue.

## Trane Rental Services



Water-Cooled Chillers, Air-Cooled Chillers, Temporary Power, Cooling Towers, Packaged A/C Units, Air Handlers; Portable A/C Units.

## Trane Building Services



Reduce operating costs and extend the life of your equipment with planned maintenance from Trane.



## Represented Products



Modular chillers, magnetic bearing chillers, optimized chiller-plant controllers  
[www.arcticchillergroup.com](http://www.arcticchillergroup.com)



Comprehensive Air Purification and Corrosion Protection  
[www.bioclimatic.com](http://www.bioclimatic.com)



Ice Storage Tanks, Off Peak Cooling, Plate & Frame Heat Exchangers  
[www.calmac.com](http://www.calmac.com)



Industrial and Commercial Humidifiers  
[www.carelusa.com](http://www.carelusa.com)



Energy Efficient and Innovative Solutions for your Industry  
[www.danfoss.com](http://www.danfoss.com)



Custom Air Handling Units, Roof Top Packaged Units, Custom Coils  
[www.energylabs.com](http://www.energylabs.com)



Custom Air Handlers  
[www.innoventair.com](http://www.innoventair.com)



In-duct Airstream Disinfection Systems  
[www.lumalier.com](http://www.lumalier.com)



Custom HVAC Units, HVAC Coatings and HVAC Modifications  
[www.mjcinc.com](http://www.mjcinc.com)



Direct-fired and indirect-fired heaters, cooling systems and media  
[www.powrmatic.com](http://www.powrmatic.com)



Energy Recovery Ventilators  
[www.renewaire.com](http://www.renewaire.com)



Energy efficient temperature and humidity management technology, specifically for mission critical and data center applications  
[www.stulz-usa.com](http://www.stulz-usa.com)



Vertical Hi-Rise Fan Coil Units  
[www.temspec.com](http://www.temspec.com)



Custom roof curb manufacturer including: Roof Curbs, Insulated Roof Curbs and Vibration Isolation Curbs  
[www.thybar.com](http://www.thybar.com)



Controllers, Monitors, & Control Panels  
[www.triatek.com](http://www.triatek.com)



High-Percentage Outdoor Air Packaged Rooftop Ventilation Systems  
[www.valentair.com](http://www.valentair.com)



Drives And Motion Control Products  
[www.yaskawa.com](http://www.yaskawa.com)



# Trane Jackson

Trane is an HVAC and energy solutions company. We create high-performing environments through our use of innovative technology and systems that optimize performance and maximize efficiencies.

## ABOUT US

Trane has been making buildings better for over 100 years, and we have been serving the Tennessee and Mississippi communities since 1925. We have offices in Memphis, Nashville, Knoxville, Chattanooga, and Jackson, MS with over 270 associates serving these communities. The Nashville Trane Office was opened in 1925, under the Leadership of Cliff Roberts. Cliff retired in 1969 and was succeeded by John Tudor who owned and managed the Nashville franchise until selling it to Trane in 1995. When Trane purchased the franchise, the Nashville office became a Trane Commercial Sales Office (CSO), wholly owned and operated by Trane. In 2004, the Knoxville, Nashville, Memphis and Chattanooga offices were combined under one district. In 2015, Trane opened a CSO in Jackson, MS creating the Tennessee Mississippi District of Trane.

## APPROACH

We take a creative approach to every project; treating each project uniquely so we can collaborate to understand objectives and goals. Trane delivers outcomes; we start from the beginning and follow the process through. Plus, we always keep sustainability and energy efficiencies top of mind.

## SERVICE & SOLUTIONS

Our capabilities include commercial systems, energy services & solutions, contracting, controls/building automation, rentals and service.



### COMMERCIAL SYSTEMS

We offer the full spectrum of HVAC solutions. Trane offers a solution for every unique HVAC need.

- Chillers, Unitary
- Air Handling Systems
- Terminal Devices
- Ductless
- Dedicated Air Systems & Components
- Thermal Ice Storage



### ENERGY SERVICES AND SOLUTIONS

From cost & energy efficiencies to sustainability, we offer a portfolio of energy services and solutions to help building owners impact their business.



### RENTAL SERVICES

We offer a variety of equipment to help you with your temporary heating and cooling needs. Whether for seasonal outages or to sustain peak support times, Trane temporary chillers, air conditioning units and portable generators are ideal for your unique situation.



### CONTRACTING

Trane's full service contracting organizations provide start-to-finish solutions to any project. Our reliable services through project management, equipment and installation deliver a level of confidence to our customers that is unmatched by other suppliers.



### CONTROLS/BUILDING AUTOMATION

Trane technology provides an intuitive, mobile platform that gives you the power and flexibility to manage your buildings more efficiently, thereby reducing cost and providing a better indoor environment and smaller environmental footprint.



### BUILDING SERVICES

Our engineers and technical specialists can provide the support you need to help you achieve the most cost-effective performance from your system. From the first day of new equipment installation through the life span of your equipment, we're here for you.

**Sales Offices: TN/MS District****Parts Locations: TN/MS District****Jackson**

851 Wilson Drive, # A  
Ridgeland, MS 39157  
601.718.5800

**Memphis**

1775 Pyramid Place, # 100  
Memphis, TN 38132  
901.345.6000

**Nashville**

601 Grassmere Park Drive, # 10  
Nashville, TN 37211  
615.242.0311

**Knoxville**

5220 Middlebrook Pike South  
Knoxville, TN 37921  
865.588.0607

**Chattanooga**

6138 Preservation Drive, # 600  
Chattanooga, TN 37416  
423.296.1506

**Jonesboro, AR**

2905 Caprice Parkway  
Jonesboro, AR 72404  
870.268.0281

**Jackson, MS**

851 Wilson Drive, Suite B  
Ridgeland, MS 39157  
601.718.5741

**Memphis**

4140 Getwell Road  
Memphis, TN 38118  
901.254.7348

**Memphis**

5222 Pleasant View Road  
Memphis, TN 38134  
901.345.6091

**Nashville**

601 Grassmere Park Drive, # 26  
Nashville, TN 37211  
615.242.2300

**Nashville DSO**

1654 Elm Hill Pike, # 101  
Nashville, TN 37210  
615.932.6363

**Jackson, TN**

138 Commerce Center Circle, #100  
Jackson, TN 38301  
731.424.0200

**Knoxville**

1609 Amherst Road  
Knoxville, TN 37909  
865.584.6412

**Chattanooga**

4167 South Creek Road  
Chattanooga, TN 37406  
423.296.9993

Visit [tranetnms.com](http://tranetnms.com) to learn more.



Ingersoll Rand (NYSE:IR) advances the quality of life by creating comfortable, sustainable and efficient environments. Our people and our family of brands—including Club Car®, Ingersoll Rand®, Thermo King® and Trane®—work together to enhance the quality and comfort of air in homes and buildings; transport and protect food and perishables; and increase industrial productivity and efficiency. We are a \$14 billion global business committed to a world of sustainable progress and enduring results.



[ingersollrand.com](http://ingersollrand.com)