



TRANE[®]

Making Buildings Better
Trane Chicago
Products and Solutions Line Card



Trane® Control Systems



Tracer® ES™

Enterprise wide/multi-building management cloud based solution



Tracer® SC

Scalable web-based building automation solution



Tracer® Concierge™

Bundled Building & Lighting Controls



Tracer® Equipment Controllers

Factory & Field Mounted Equipment Controllers. Easily integrate with other protocols.



Trane Drives

Trane TR150/TR200 Variable Frequency Drives; 6, 12, & 18 Pulse



Trane Prepackaged Solutions (PPS)

Complete portfolio of pre-designed HVAC systems control solutions that make planning, specifying, schematics and incorporating Trane control systems fast and efficient



BAS R'Newal™

Controls Program Upgrade



Air-Fi™ Wireless System

Wireless communication, Wireless zone sensors, ZigBee® Building Automation Certified

Trane Energy Management Systems & Services



Trane Intelligent Services

Aggregates data collected in a building. Provides tools to make real-time, near-term, and long-term decisions that maximize the way buildings are managed and maintained.



EarthWise™ Solutions

Prepackaged Equipment & Controls. Intelligent VAV, Thermal Ice Storage, Central Geothermal, Low Temp/Low Flow

Water-Cooled Chillers



Model CICB

Scroll Chiller, 30 ton capacity, expandable 10x. Nominal 15 HP/circuit, ASHRAE 90.1-2013 compliant



Model CGWQ

Scroll Compressors - 20 thru 70 Tons



Series R Model RTWD

Helical Rotary Compressor - 80 thru 250 Tons



Series R Model RTHD

Helical Rotary Compressor - 150 thru 450 Tons



Optimus™ Model RTHD

Variable Speed Helical Rotary Compressor - 150 thru 450 Tons



Series S Model CVHS

CenTraVac® Chiller - Oil-Free Centrifugal Compressor - 180 thru 390 Tons



Model CVHE CenTraVac Chiller

3-Stage Centrifugal Compressor - 120 thru 500 Tons



Model CVHF CenTraVac Chiller

2-Stage Centrifugal Compressor - 325 thru 2,000 Tons



Model CVHL CenTraVac Chiller

Centrifugal Compressor for Elevated Chilled Water Temperatures - 400 thru 1,800 Tons



Model CDHF CenTraVac Chiller

Dual Compressor Centrifugal Compressor - 1,500 thru 4,000 + Tons

Air-Cooled Chillers



Model CCAQ

Scroll Compressor with Air-Cooled Condenser; 20 thru 70 Tons



Model RTUD

Helical Rotary Compressor with Air-Cooled Condenser - 80 thru 250 Tons



Model CGAM

Scroll Compressor - 20 thru 130 Tons



Series R RTAC

Helical Rotary Chiller - 140 thru 500 Tons



Stealth™ Model RTAE

Variable Speed Helical Rotary Compressor - 150 thru 300 Tons



Sintesis™ Model

Variable Speed Helical Rotary Compressor - 110 thru 500 Tons

Air Handling Systems



Blower Coil Model BCHD/BCVD

Indoor; 400 thru 3,000 CFM; ECM motors; Factory-Engineered & Mounted Controls



Performance Climate Changer™ Model UCCA

Indoor; 1,500 thru 15,000 CFM; 2" R-13 Foam Insulated Panels; Factory-Engineered & Mounted Controls



Performance Climate Changer Model CSAA

Indoor & Outdoor; 1,500 thru 60,000 CFM; 2" R-13 Foam Insulated Panels; Factory-Engineered & Mounted Controls



Trane Custom

Indoor & Outdoor; 1,500 thru 200,000 CFM; -12.0 to +12.0 inches w.g; Thermal Performance with R-Values up to 25

Terminal Products



Model VUVE

Vertical Unit Ventilators; 750 thru 1,500 CFM



Model HUVU

Horizontal Unit Ventilators; 750 thru 2,000 CFM



UniTrane™ Model FC*B

Fan Coil; 200 thru 1,200 CFM



Force-Flo™ Model FF*B

Cabinet Heater; 200 thru 1,200 CFM



VariTrane™ Model VC*F

Single Duct Variable Air Volume Boxes; 225 thru 8,000 CFM



VariTrane Model VDDF

Dual Duct Variable Air Volume Boxes; 350 thru 4,000 CFM



VariTrane Model V**F

Fan-Powered Variable Air Volume Boxes; 350 thru 4,000 CFM; Parallel or Series Configuration



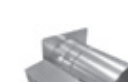
VariTrane Model L**F

Low Height Fan-Powered Variable Air Volume Boxes; 350 thru 4,000 CFM; Parallel or Series Configuration



VariTrane Model VRRF

Round Inlet/Round Outlet RetroFit Variable Air Volume Boxes; 225 thru 4,000 CFM



Model UHS/UHP

Propeller Unit Heaters; Hydronic & Steam



Model UHWA/UHAA/UHRA/UHXA/UHEC/UHCA

Electric Unit Heaters



Indoor Gas Heating Units

Unit Heaters & Duct Furnaces



Packaged Rooftops



Impack®

Cooling, Gas/Electric, & Heat Pump; 1.5 thru 5 Tons



Precedent™ 17 Plus Packaged Rooftops

Cooling & Gas/Electric; 17 SEER; 3 thru 5 Tons



Precedent & Precedent eFlex™

Cooling, Gas/Electric, Air-Source or Water-Source Heat Pump; eFlex Variable Speed Compressor; 3 thru 10 Tons



Voyager™ & Voyager eFlex™
Cooling, Gas/Electric, Air-Source or Water-Source Heat Pump, eFlex Variable Speed Compressor, 12.5 thru 17.5 Tons



Foundation™
Cooling, Gas/Electric; Adapts to Trane and Competitors Roof Curbs; 12.5 thru 25 Tons



Voyager Commercial
Cooling, Gas/Electric; 27.5 thru 50 Tons



IntelliPak™ I
Cooling, Gas/Electric, Hot Water, Steam; 20 thru 75 Tons



IntelliPak II
Cooling, Gas/Electric, Hot Water, Steam; Air-Cooled and Evaporative Condenser; 90 thru 162 Tons

Dedicated Outdoor Air Rooftops



Horizon™ Model OA
Packaged Outdoor Air Units; Cooling, Gas/Electric, Air-Source or Water-Source Heat Pump; Heat Recovery; 500 thru 13,500 CFM

Make-Up Air Gas Heating Units



Model DFIA/DFOA
Direct Fired Make-Up Air Units; Indoor & Outdoor; 225 thru 9,075 MBH



Model GSAA
Indoor Gas-Fired Make-Up Air Handlers; Standard & High Efficiency; 100 thru 1,200 MBH



Model GRAA
Outdoor Gas-Fired Make-Up Air Handlers; 100 thru 1,200 MBH



Model AHOA
Packaged Air Handlers; Cooling, Make-Up Air, & Ventilation

Split Systems



Split Systems
Cooling & Heat Pump; Gas, Electric, or Hot Water Heat; 1.5 thru 5 Tons



Odyssey™ Split Systems
Cooling & Heat Pump; Electric, Hot Water, Steam Heat; 6 thru 25 Tons



Model RAUJ
Air-Cooled Condensing Units; Available with Remote Chiller Evaporators; 20 thru 120 Tons



Model CAUJ
Air-Cooled Condensers; 20 thru 120 Tons

Ductless Split Systems



Ductless Split Systems
Cooling only, Heat Pump, Single Zone, Multizone; Up to 27 SEER, Up to 38.2 IEER



Trane VRF
Variable Refrigerant Volume; Heat Pump & Heat Recovery Option; 3 thru 36 Tons

Self-Contained Systems



IntelliPak™ Modular Series
Water-Cooled or Air-Cooled; 20 thru 35 Tons

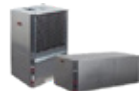


IntelliPak™ Signature Series
20 thru 110 Tons (Water-Cooled); 20 thru 60 Tons (Air-Cooled)



Midrange
Water-Cooled, Remote Air-Cooled, or Integral Air-Cooled; 3 thru 15 Tons

Water-Source Heat Pumps



Axiom™ Model GEH/GEV
1/2 thru 15 Tons (Horizontal); 1/2 thru 25 Tons (Vertical)



Axiom Model EXH/EXV
High-Efficiency; ECM Motors; 1.5 thru 6 Tons



Axiom Model DXH/DXV
High-Efficiency 2-Stage; ECM Motors; 2-Stage Compressor; 2 thru 6 Tons



Axiom Model VSH/VSV
High-Efficiency Variable Speed; ECM Motors; Variable Speed Compressor; 2 thru 5 Tons



Axiom Model GEC
High-Efficiency Console; 1/2 thru 1.5 Tons



Axiom Model GET
High-Efficiency Vertical Stack; 3/4 thru 3 Tons



Axiom Model EXW
Water to Water 5 thru 20 Tons

Trane Rental Services



Water-Cooled Chillers, Air-Cooled Chillers, Temporary Power, Cooling Towers, Packaged A/C Units, Air Handlers, Portable A/C Units

Product Partners



Sound & Vibration Attenuation Products
www.brd-noise.com



Ice Storage Tanks, Glycol Management Systems
www.calmac.com



Packaged Chiller/Boiler Plants; Custom Pumping Systems, Integral Controls
www.canariis.com



Modular Water-Cooled & Heat-Recovery
www.chillitchillers.com



Computer Room Units; Data Center Cooling
www.compu-aire.com



Filter Systems
www.dynamicaqs.com



Evaporative Cooling Solutions; Factory or Field Installed
www.evaporcool.com



Energy Recovery Ventilators
www.renewaire.com



Vertical High Rise Fan Coils
www.temspec.com



Data Center Cooling; Critical Environment Dehumidification
www.munters.com



Cooling Towers; FRP Construction; Low Sound, Direct-Drive
www.reymrsa.com



Vertical Unit Ventilators
www.schoolair.com

Trane Chicago
7100 S. Madison Street
Willowbrook, IL 60527
630-734-6023

Visit Trane.com/Chicago to learn more.



Ingersoll Rand (NYSE:IR) advances the quality of life by creating and sustaining safe, comfortable and efficient environments. Our people and our family of brands—including Club Car®, Ingersoll Rand®, Thermo King® and Trane® — work together to enhance the quality and comfort of air in homes and buildings; transport and protect food and perishables; secure homes and commercial properties; and increase industrial productivity and efficiency. We are a \$13 billion global business committed to a world of sustainable progress and enduring results.



trane.com ingersollrand.com