



PRIMER Inverter



High Efficiency Inverter

Split System 5-10 Tons DC Motor AHU

Light Commercial

TYH/TYK/TYA R410A Series 50 Hz

TRANE
TECHNOLOGIES



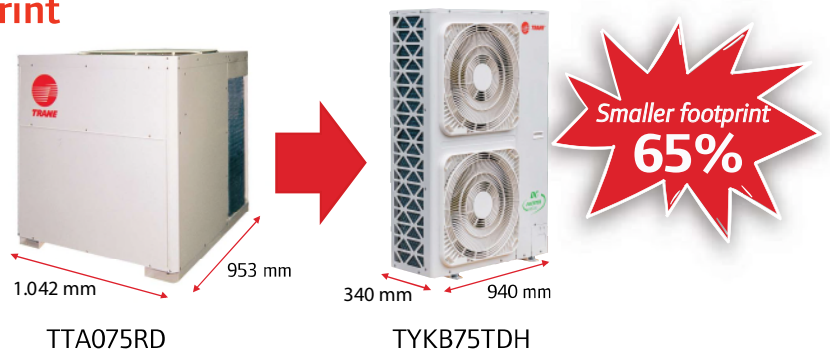
High Energy Efficiency System



- The introduction of a high efficiency DC Inverter compressor driven by the most advanced control technology is designed to provide more precise operation and improved system efficiency to reach maximum SEER 18.0 (averagely improved 40% from Fixed speed type). The compressor speed is adapted to match the fluctuating cooling load of the buildings while ensuring the appropriate variable supply of cooling.

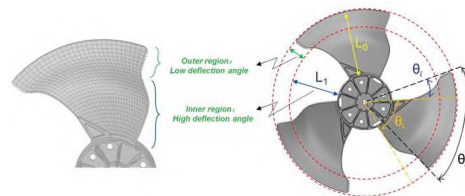
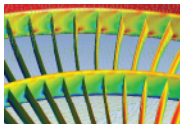
Space Saving with Smaller Footprint

- Trane PRIMER Inverter is designed for smaller condensing unit dimensions to save the installation space at maximum of 65% from current product.



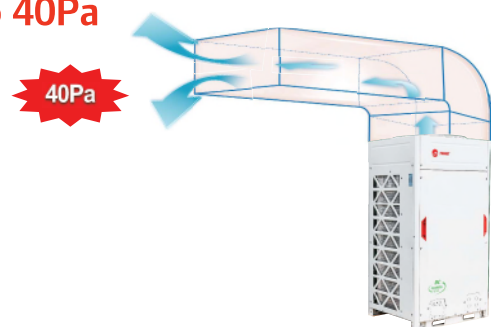
Low Operation Sound Noise

- Trane PRIMER Inverter optimally designed fan shape, new designed discharge air grille and air deflector together supply higher air volume and lower operation sound.



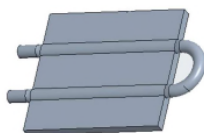
External Static Pressure of Outdoor Units Up to 40Pa

- DC fan motor can enhance External Static Pressure of the outdoor fan be adjustable up to maximum 40 Pa solving the airflow won't be affected by the blinds or orifice plates in front of the outdoor unit.

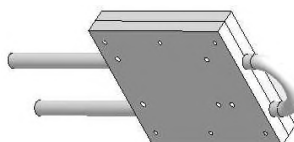


High Reliability with New Refrigerant Cooled PCB Technology

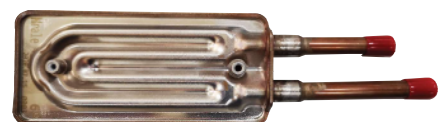
- New full package for top discharge and Micro Channel Radiator for side discharge design to enhance heat transfer area and decrease temperature by 15 °C.



Old: Crimping



New for Top : Full Package



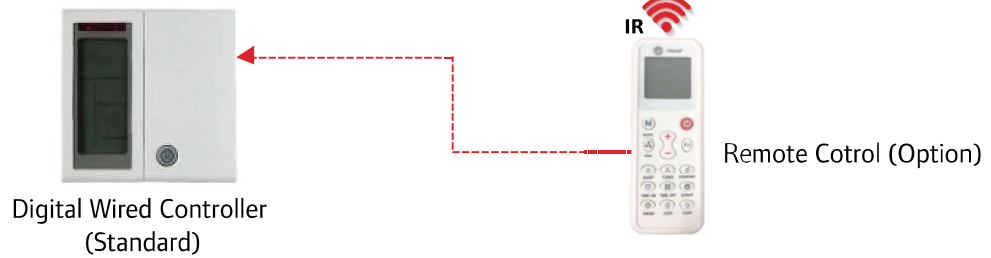
New for Side :Micro Channel Radiator

Easy service and maintenance

- Self - Diagnostic system shows error codes for the causes of malfunction which help reduce service time.

Completed DOL Starter and Controller

- Factory completed build-in DOL starter and digital wired controller.



TYH Air Handling Unit

- For horizontal air discharge.
- Powder paint finished casing.
- Direct drive with DC motor.
- Electronic Expansion Valve.
- Factory installed PCB, DOL starter and display wired controller.
- Suitable for ducted application (fan motor hp output will be specially selected to properly match with Free blow application).



TYK/TYA Condensing Unit

- Powder paint finished casing.
- External current overload for compressor, Hi/Low pressure, temperature protection, phase protection (Missing phase/Phase loss/Under and Over voltage protection).
- Fully charged R410A refrigerant with shut-off valve.



Product Specifications

UNIT MODELS	Indoor Unit		TYH060NBH	TYH120NBH
	Outdoor Unit		TYKB60TDH	TTA120JDH
Performance Data	Cooling Capacity	Btu/h	60,000	120,000
	(Min-Max)		(30,000 - 65,000)	(50,000 - 130,000)
	SEER	Btu/h/W	18	18
	Nominal Airflow	CFM	2,000	4,000
System Data	Refrigerant Type		R-410A (Fully Charged)	
	No. of Refrigerant Circuits		1	1
	Refrigerant Connection Type		Braze	Braze
	Suction Line OD	in	7/8"	1 1/8"
	Liquid Line OD	in	3/8"	1/2"
	Drain Connection Size	in	1 (25.4)	1 (25.4)
	Drain Connection Type		Step Pipe - MPT	
Indoor Units				
Electrical Data	Power Supply	V/Ph/Hz	220-240 / 1 / 50	
Flow Control	Type		Electronics Expansion Valve	
Fan	Fan Type		Double Inlet Centrifugal with Forward Curve Wheel	
	Qty		1	2
	Drive Type		Direct Drive	
Fan Motor	Type		DC Motor	
	Output	kW	0.55	0.55
	Qty x RLA	A	1.6	2 x 1.6
Air Filter	Type		1-in Washable Aluminium Air Filter	
Dimensions (HxWxD)	Unit (Net)	mm	520 x 1,465 x 916	620 x 1,833 x 916
Weight	Unit (Net)	kg	90	143
Outdoor Units				
Electrical Data	Power Supply	V/Ph/Hz	380-415 / 3 / 50	
Compressor	Type		Twin Rotary DC Inverter	Scroll DC Inverter
	Qty x RLA		11.9	15.8
Fan	Fan Type		Propeller	Propeller
	Hot Air Discharge Direction		Horizontal (Front)	Vertical (Top)
	Qty		1	1
Fan Motor	Type		DC Motor	
	Output	Watt	100	750
	Qty x RLA		0.9	7.8
Dimensions (HxWxD)	Unit (Net)	mm	1,430 x 940 x 340	1,720 x 925 x 785
Weight	Unit (Net)	kg	102	215

Note :

1. Capacity is rated at ARI conditions of 80 / 67 FDB/FWB for indoor & 95 FWB for outdoor.
2. Outdoor unit dimensions depth is not included the dimensions of unit's legs.
3. Product design and specifications are subject to change without notice.



เทรน (ประเทศไทย)

เลขที่ 1126/2 ชั้น 30-31 อาคารวานิช 2 ถ.เพชรบุรีตัดใหม่ แขวงมักกะสัน เขตราชเทวี กรุงเทพฯ 10400
☎ 0-2761-1111

