



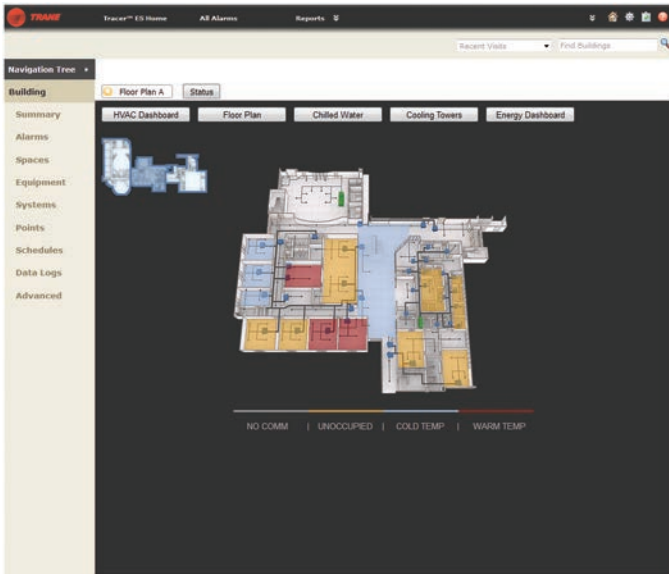
TRANE®

Tracer™ Custom Graphics

Visualize Your Building Automation System



Floor Plans

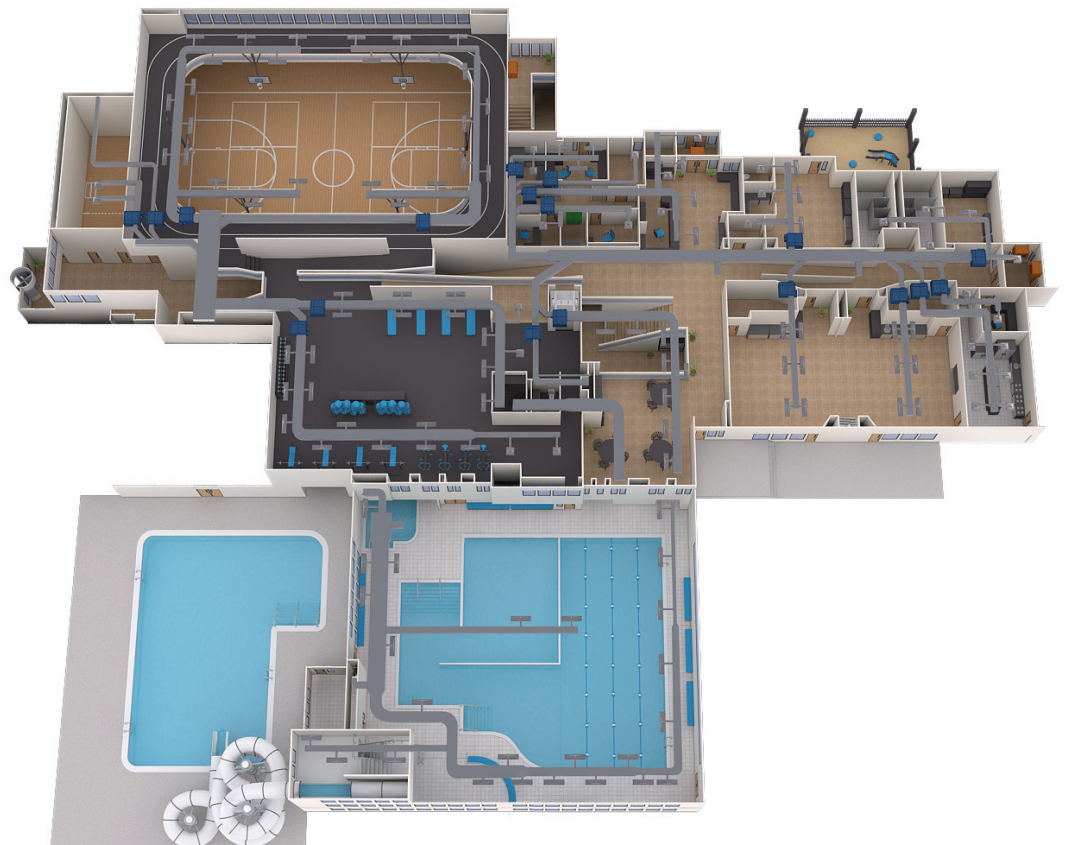


ES UI Example

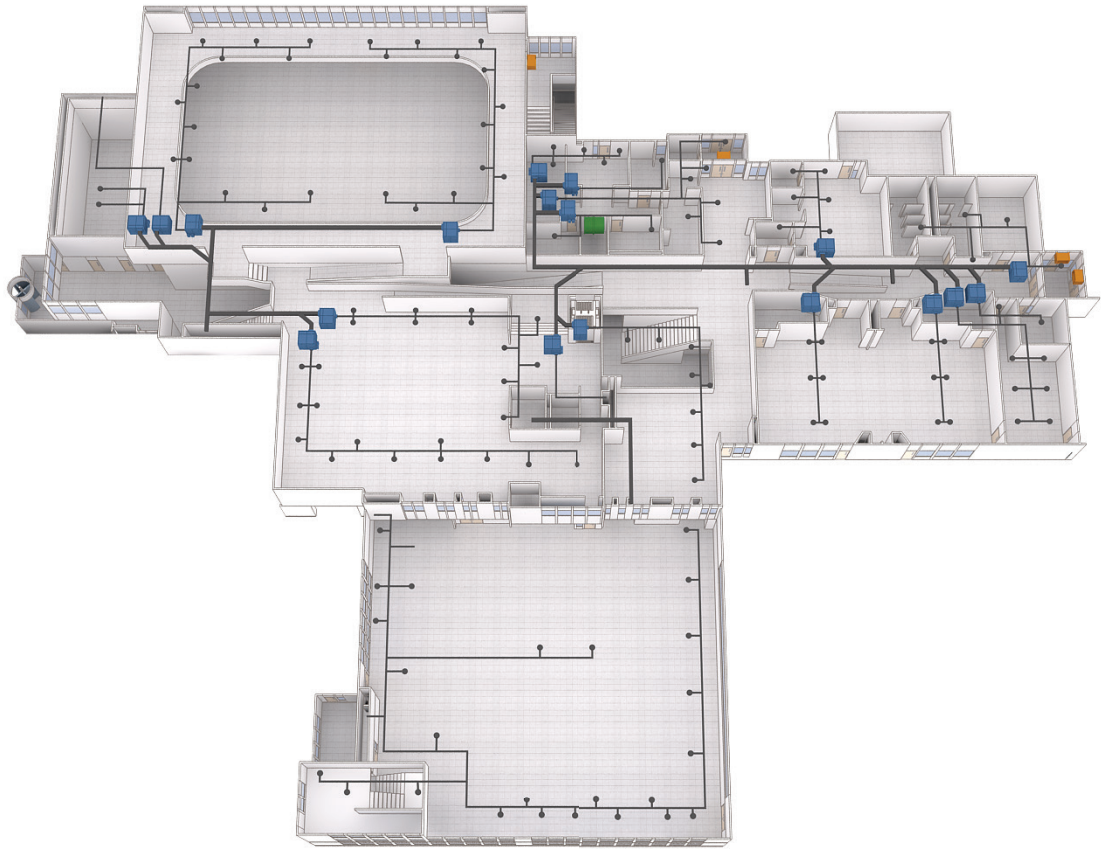
Floor plan graphics give the user an overview of the building spaces with an accurate representation of the architectural and HVAC layout of the building.

With the ability to see how the HVAC runs through the building, the user can quickly understand if any spaces need attention and resolve issues promptly.

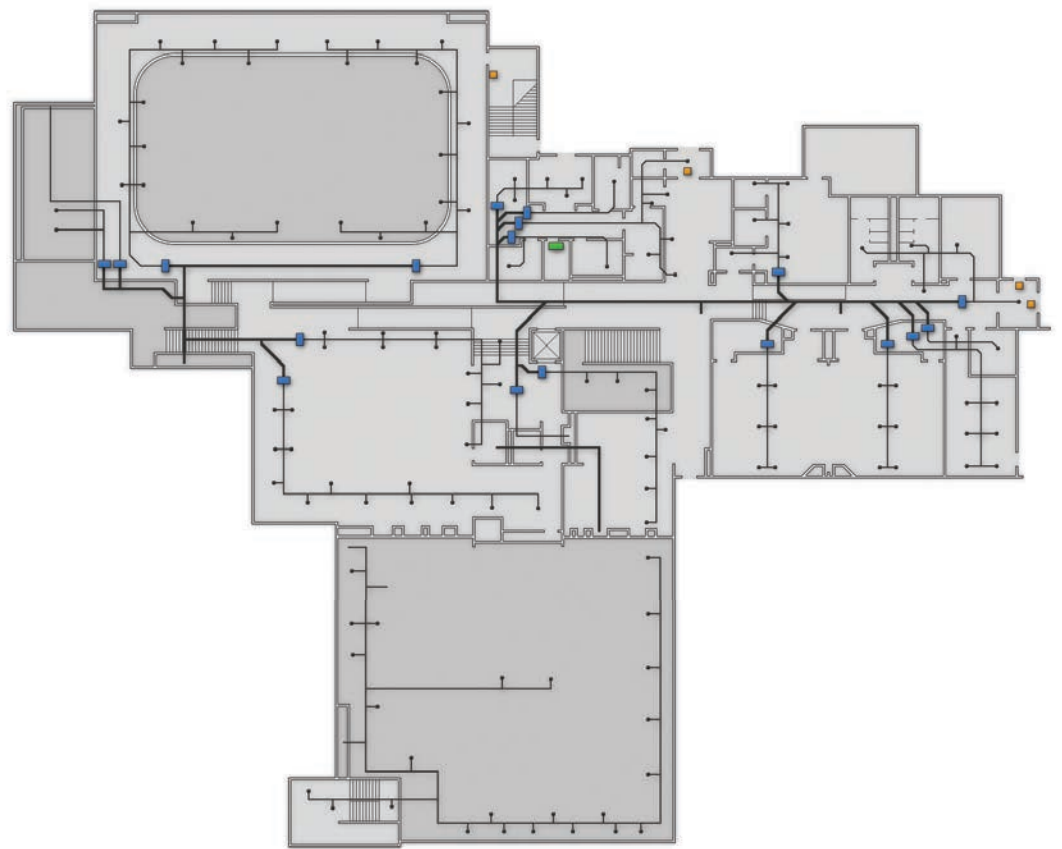
Three style options exist: basic 2D, standardized 3D, or custom high detail 3D. These options make it easy to tailor the look and feel of the building graphics to best suit the customer's unique needs.



3D Floor Plan, High Detail



3D Floor Plan, Standard



2D Floor Plan

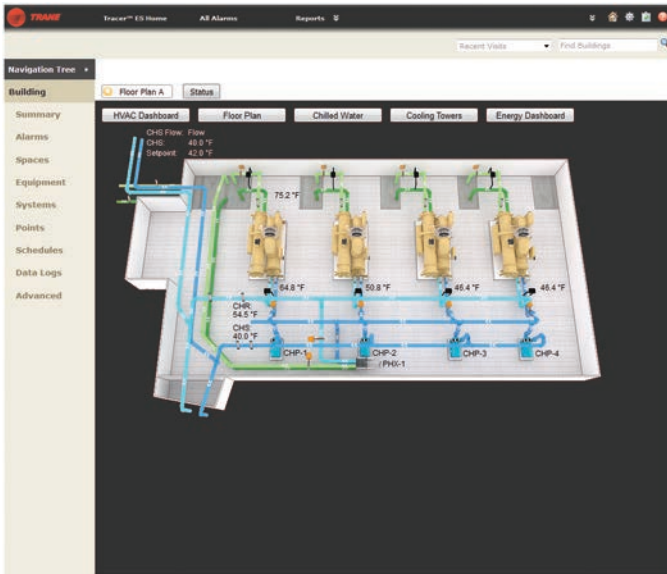
Hydronics

Hydronic system graphics showcase the water-side equipment and components, giving the user visibility and control over either a section or the entirety of the system.

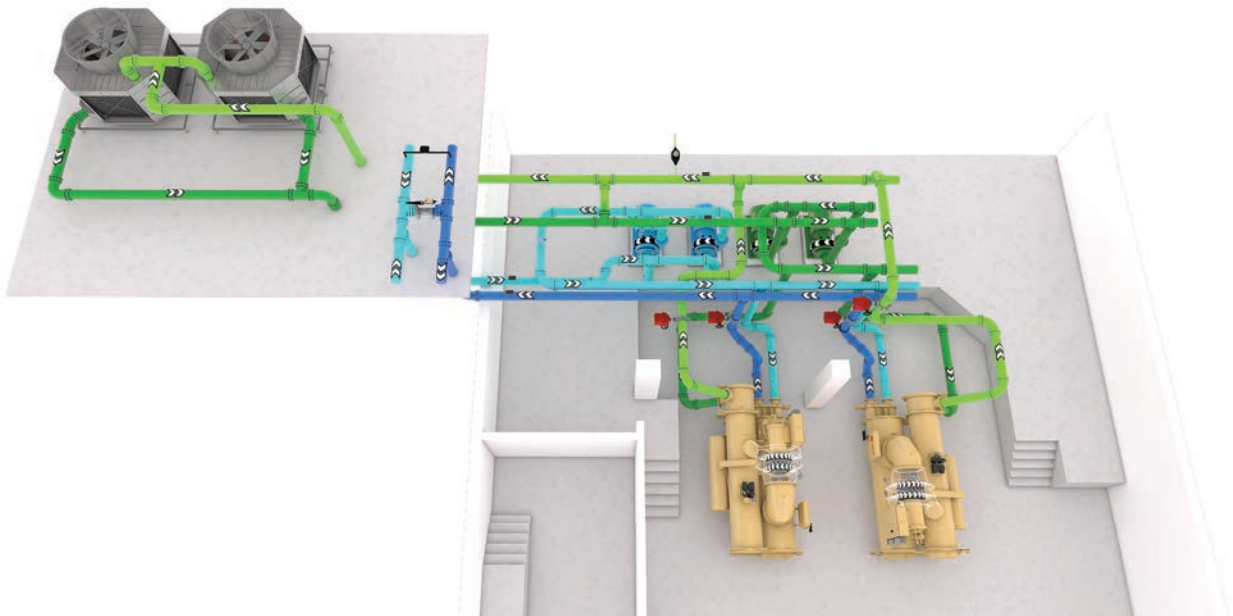
Flow-style graphics are an easy to read, schematic view of the system, making it quicker to understand the status of each device.

Actual-style graphics are a highly realistic representation of the plant as is built in the actual space.

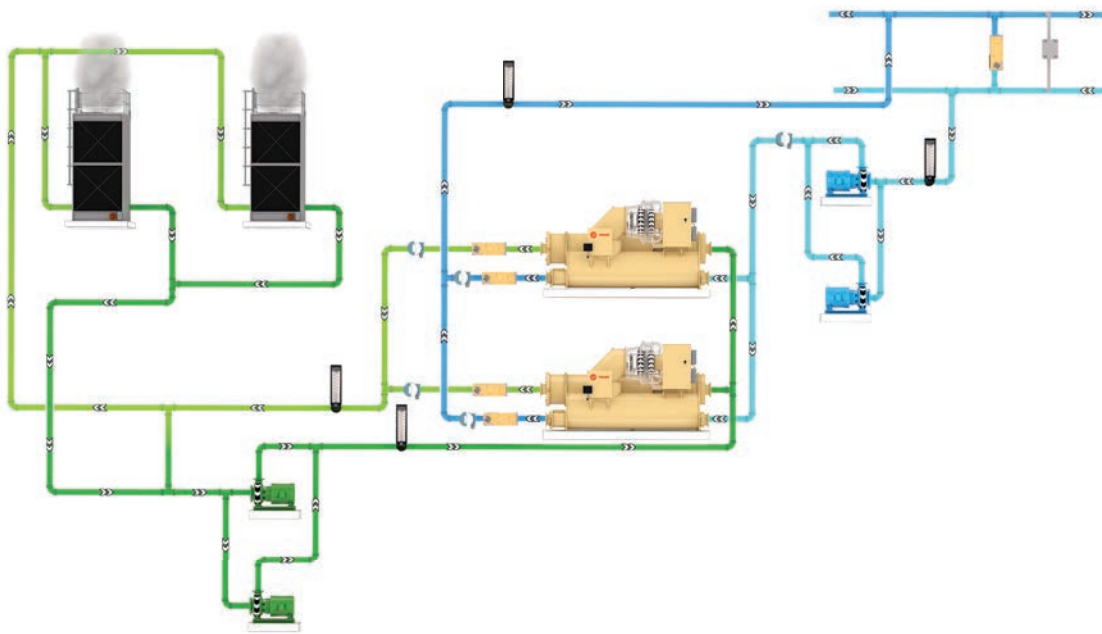
Basic analog or binary animations provide an additional visual indication of each unit's status.



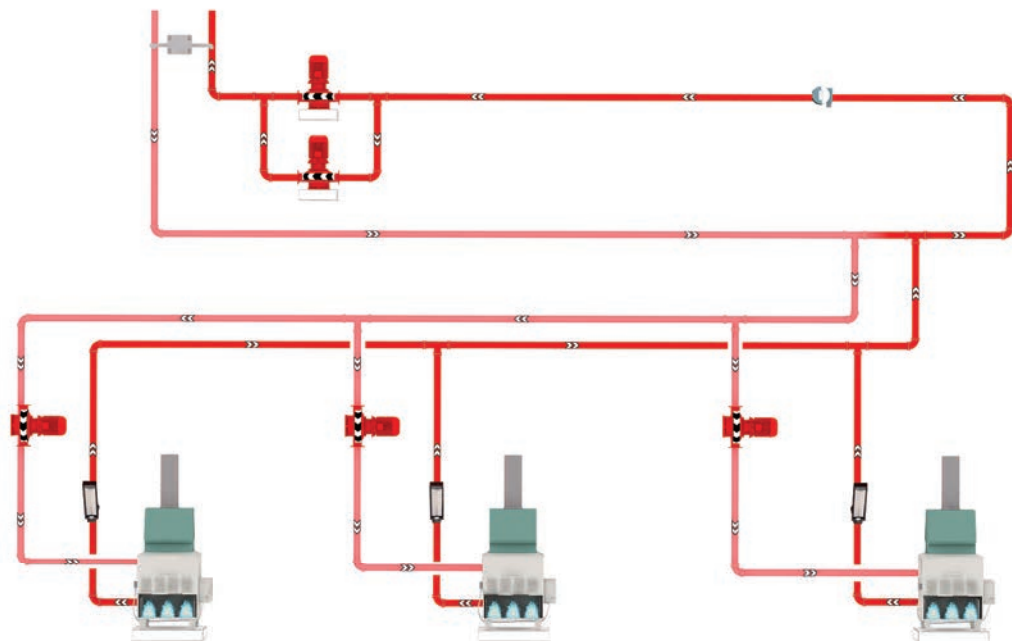
ES UI Example



Hydronics Actual

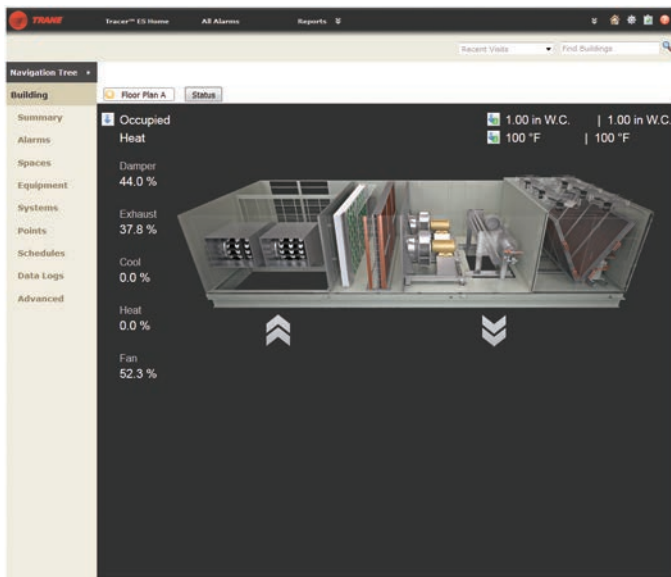


Hydronics Flow (Chilled Water)



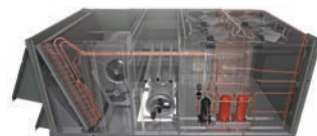
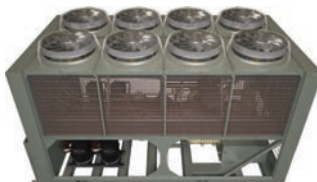
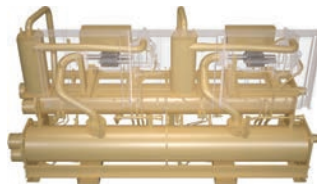
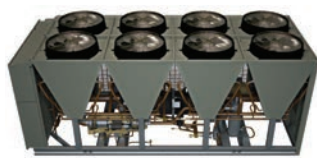
Hydronics Flow (Hot Water)

Standard Equipment



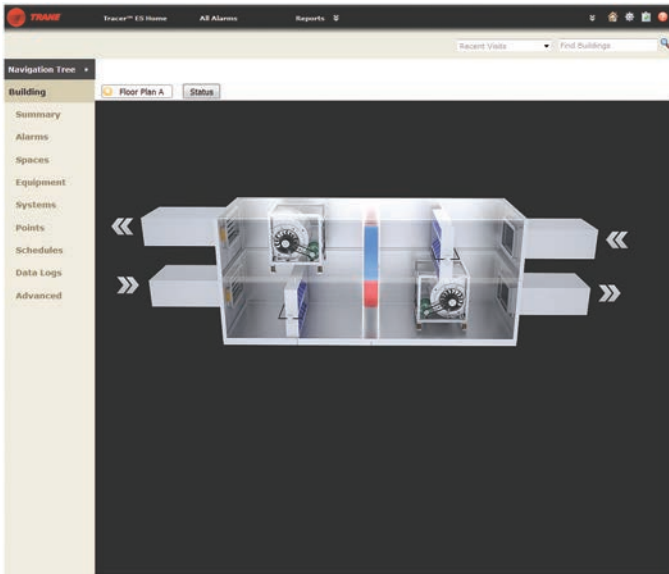
ES UI Example

Over one hundred fifty standard graphics for Trane's most common equipment and configurations are pre-installed in ES and SC. These ultra-high quality images are right at the technician's fingertips, ready to install with just a few clicks. These graphics are pre-populated with essential point data, making installation even easier and quicker.





Custom Equipment



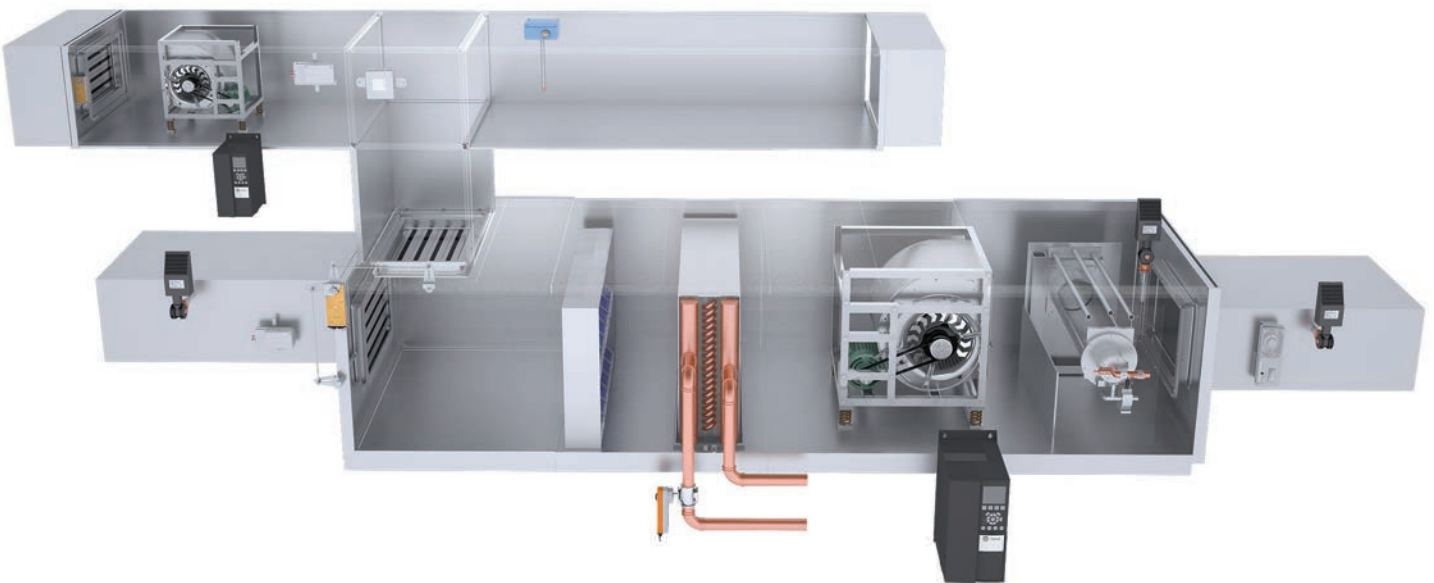
ES UI Example

3D equipment graphics give the user insight into the units that are part of their building's HVAC system.

It is easy to understand the status of a unit with flow-style graphics, which simply represent the configuration of an air unit.

For a higher detail representation, the actual-style renders a just-out-of-the-factory quality of detail and realism.

Basic analog or binary animations provide an additional visual indication of the unit's status.



Flow Equipment

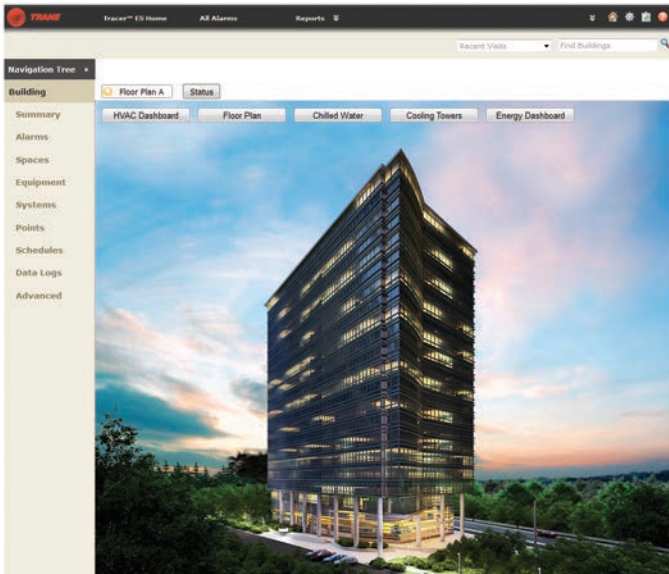


Actual Equipment



Custom Equipment

Exterior/Site Graphics



ES UI Example

Building exterior and site graphics can be great backgrounds for landing and navigation pages. An image of the building or buildings is a recognizable, intuitive indicator of where the user is in the system.

These graphics can be stylized, or very high detail and realistic, based on the needs and interests of the customer.



Exterior High Detail Render

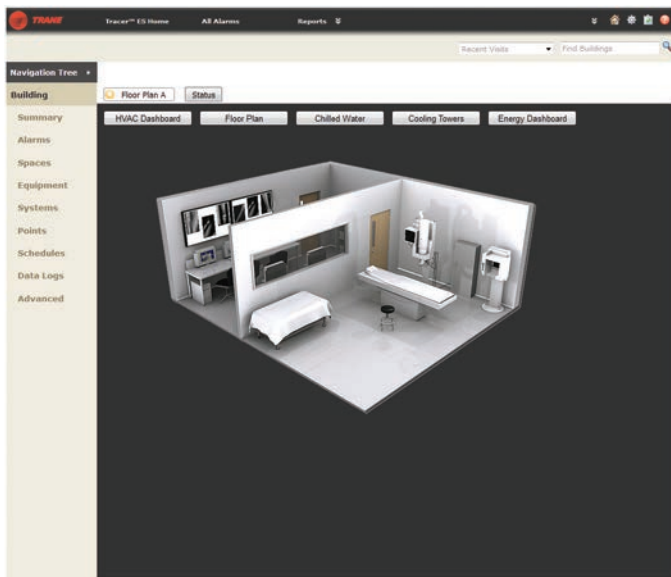


Site Map Stylized Render



Site Map High Detail Render

Custom Graphics

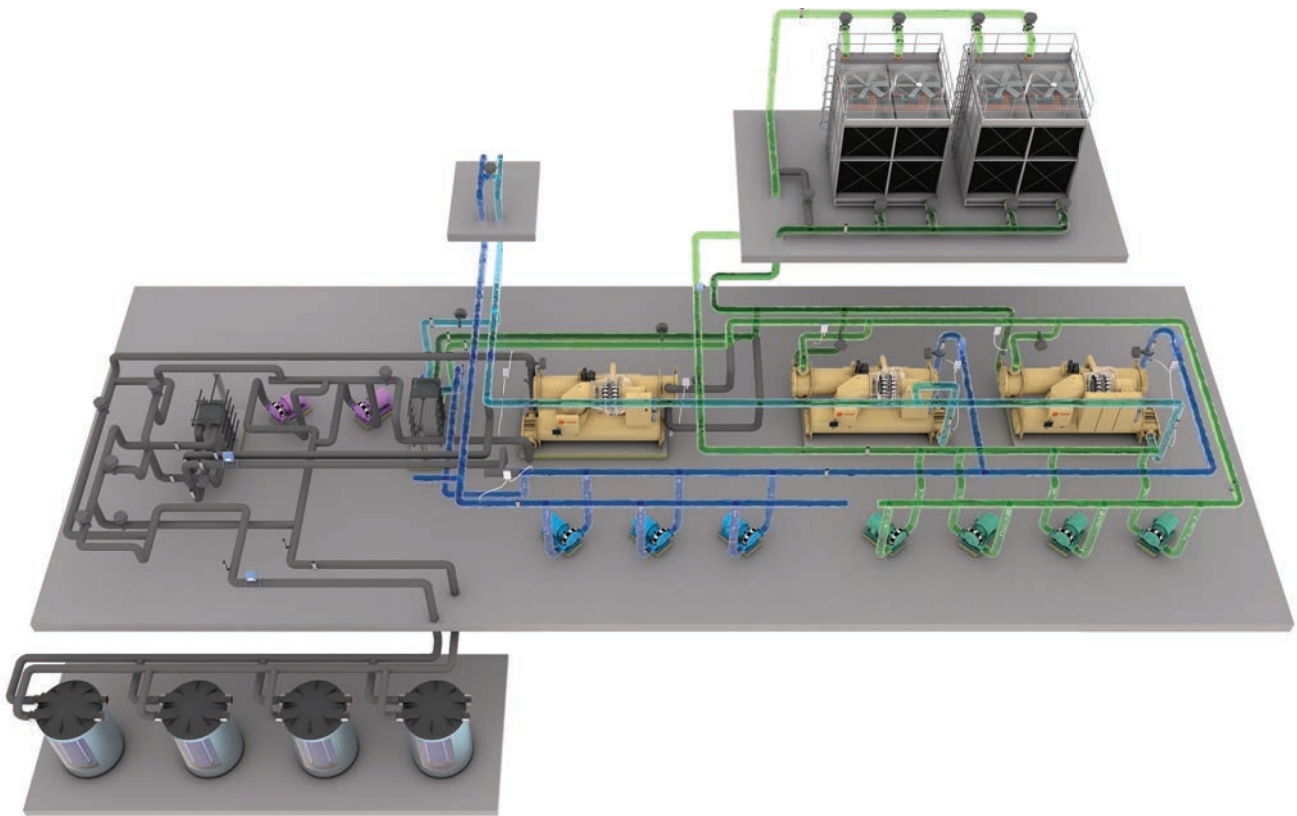


ES UI Example

There are many different ways to visualize the spaces and systems of the building. By leveraging the advanced capabilities of 3D modeling and animation, it's possible to customize graphics based on unique customer and site needs.



Interior High Detail Render



Hydronics with Animated “Flowing” Pipes



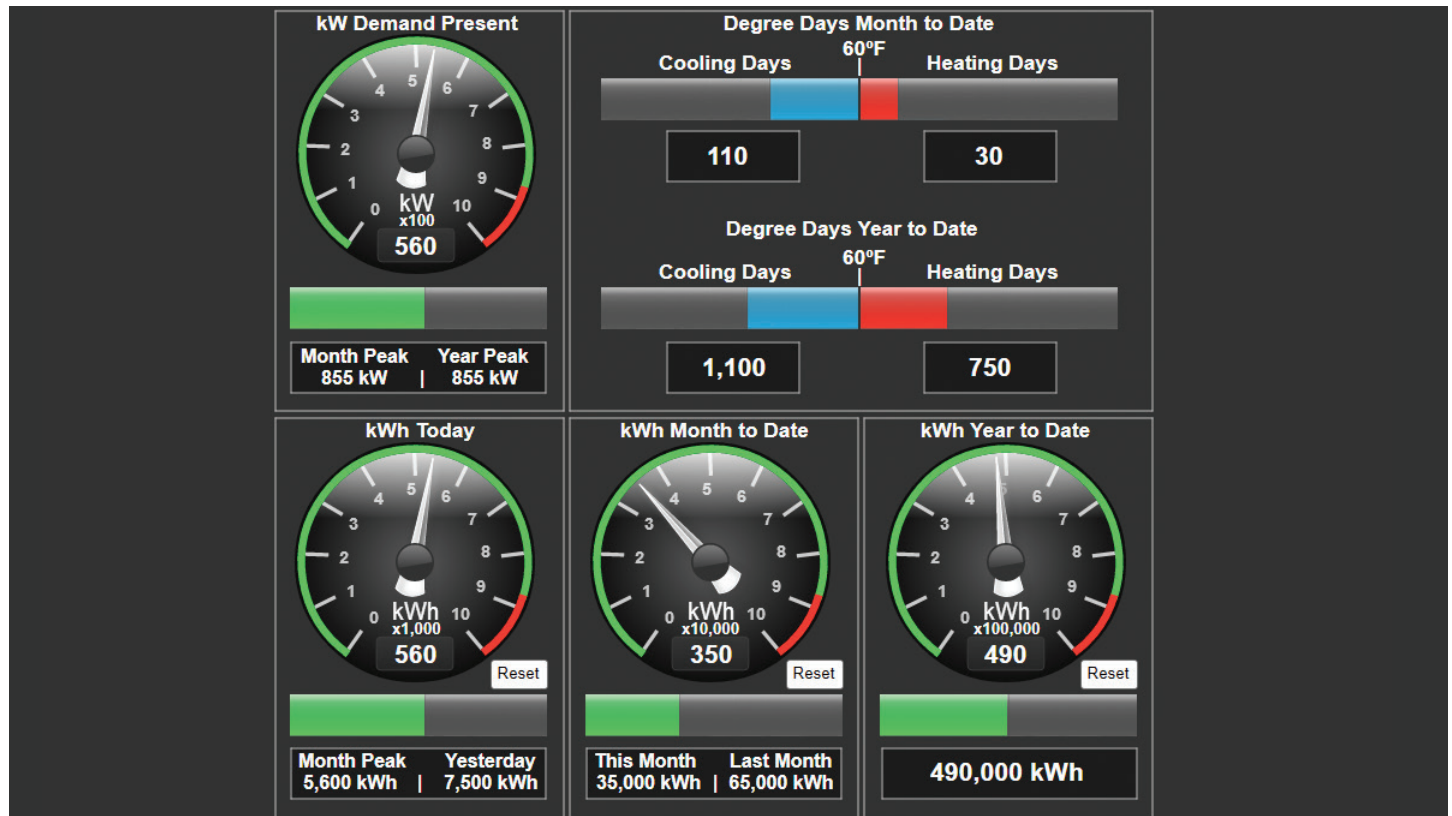
Building Cut-Away

Dashboards

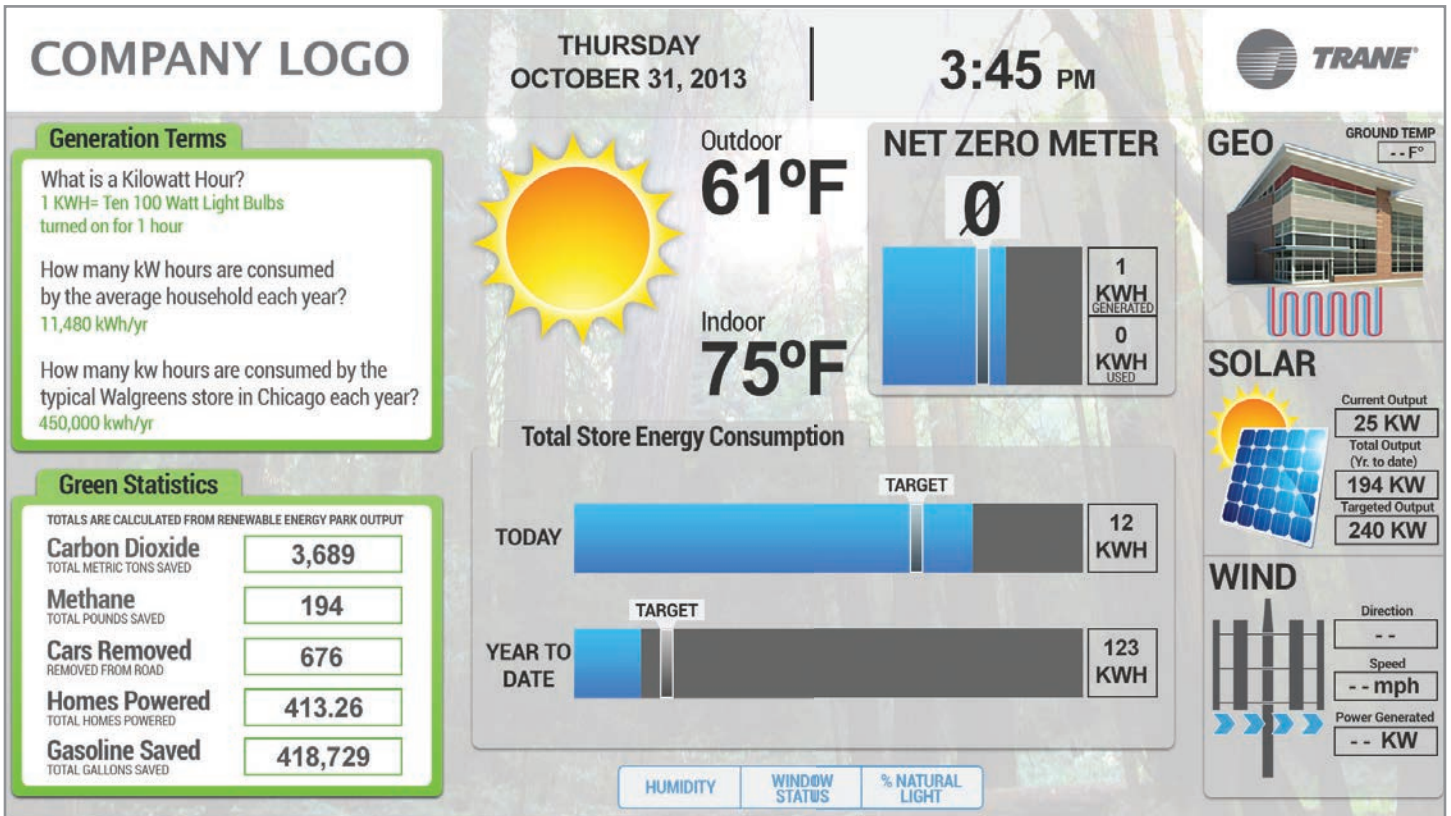


ES UI Example

Dashboard graphics are an excellent way to display a large amount of related data on one screen while still keeping it easy to read. The data provided by the system can be visualized using the built-in widgets in Tracer™ Graphics Editor, or with custom stylized widgets.



Dashboard, TGE Widgets



Dashboards, Custom

Tracer™ custom graphics are created by Trane's in-house digital production studio. This team of digital design experts is dedicated to providing high end visuals that create an engaging and intuitive user experience for Tracer™ ES and SC. Customers can rely on Trane to deliver a consistent graphics package from job to job and phase to phase, thanks to the industry experience and workflow efficiencies gained over the studio's 10+ years of existence. The team is driven to think outside the box and can collaborate directly with customers to produce unique graphics packages. Contact your local Trane representative today.



Ingersoll Rand (NYSE:IR) advances the quality of life by creating comfortable, sustainable and efficient environments. Our people and our family of brands—including Club Car®, Ingersoll Rand®, Thermo King® and Trane®—work together to enhance the quality and comfort of air in homes and buildings; transport and protect food and perishables; and increase industrial productivity and efficiency. We are a \$13 billion global business committed to a world of sustainable progress and enduring results.



ingersollrand.com