



# Product Catalog

## Sintesis™ Air-Cooled Chillers Model RTAF 115 to 500 Nominal Tons



August 2015

**RLC-PRC049B-EN**





## Introduction

The new Trane Sintesis™ model RTAF chiller is the result of a search for higher reliability, higher energy efficiency, and lower sound levels for today's environment.



Sintesis is the newest member of Ingersoll Rand's EcoWise™ portfolio of products, designed to lower environmental impact with next-generation, low global warming potential (GWP) refrigerant and high efficiency operation. Sintesis chillers are designed to operate with either R-134a or DuPont™ Opteon® (R-513A), a next generation refrigerant with 55 percent lower GWP than R-134a.

The Sintesis chiller uses the proven design of the Trane helical-rotary compressor, which embraces all of the design features that have made the Trane helical-rotary compressor liquid chillers such a success since 1987.

Sintesis chillers offers high reliability coupled with greatly improved energy efficiency, and improved acoustical performance, due to its advanced design, low-speed, direct-drive compressor, and proven Sintesis performance.

The major advantages of the Sintesis chiller are:

- High reliability
- Lower sound levels
- Higher energy efficiency at full load & part load.

The Sintesis model RTAF chiller is an industrial-grade design, built for both the industrial and commercial markets. It is ideal for schools, hotels, hospitals, retailers, office buildings, and industrial applications.

## Copyright

This document and the information in it are the property of Trane, and may not be used or reproduced in whole or in part without written permission. Trane reserves the right to revise this publication at any time, and to make changes to its content without obligation to notify any person of such revision or change.

## Trademarks

All trademarks referenced in this document are the trademarks of their respective owners.

## Revision History

### **RLC-PRC049B-EN (04 Aug 2015)**

Extended product family size to 500T.



# Table of Contents

Introduction .....	2
Table of Contents .....	3
Features and Benefits .....	4
Application Consideration .....	7
Model Number Descriptions .....	14
General Data .....	16
Controls .....	18
Electrical .....	24
Electrical Connections .....	28
Dimensions .....	36
Weights .....	46
Mechanical Specifications .....	47
Options .....	50



# Features and Benefits

## Sintesis Helical-Rotary Compressor

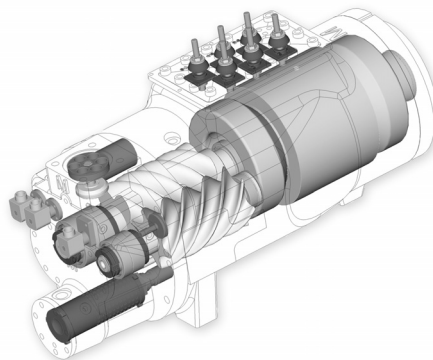
- Unequaled-reliability. The Sintesis™ Trane helical-rotary compressor is designed, built, and tested to the same demanding and rugged standards as the Trane scroll compressors, the centrifugal compressors, and the previous generation helical-rotary compressors used in both air- and water-cooled chillers for more than 27 years.
- Years of research and testing. The Trane helical-rotary compressor has amassed thousands of hours of testing, much of it at severe operating conditions beyond normal commercial air-conditioning applications.
- Proven track record. The Trane Company is the world's largest manufacturer of large helical-rotary compressors used for refrigeration. Over 300,000 compressors worldwide have proven Trane helical- rotary compressor reliability.
- Resistance to liquid slugging. The robust design of the compressor can ingest amounts of liquid refrigerant that normally would severely damage compressor.
- Fewer moving parts. The helical- rotary compressor has only two rotating parts: the male rotor and the female rotor.
- Direct-drive, low-speed, semi- hermetic compressor for high efficiency and high reliability.
- Suction-gas-cooled motor. The motor operates at lower temperatures for longer motor life.
- Five minute start-to-start and two minute stop-to-start anti-recycle timer allows for closer water-loop temperature control.

## Capacity Control and Load Matching

The combination unloading system on Trane helical- rotary compressors uses the adaptive frequency drive for the majority of the unloading function. This allows the compressor to modulate infinitely, to exactly match building load and to maintain chilled-water supply temperatures within  $\pm 0.5^{\circ}\text{F}$  [ $\pm 0.3^{\circ}\text{C}$ ] of the set point. Helical- rotary chillers that rely on stepped capacity control must run at a capacity equal to or greater than the load, and typically can only maintain water temperature to around  $\pm 2^{\circ}\text{F}$  [ $\pm 1^{\circ}\text{C}$ ]. Much of this excess capacity is lost because overcooling goes toward removing building latent heat, causing the building to be dried beyond normal comfort requirements.

The combination of the variable unloading valve plus the adaptive frequency drive allow to exact load matching and excellent efficiencies at full load and part load.

**Figure 1. Cutaway of a compressor**



## Close Spacing Installation

The Sintesis™ chiller is minimally affected in many restricted air flow situations due to its advanced Adaptive Control™ microprocessor, which has the ability to understand the operating environment of the chiller and adapt to it by first optimizing its performance and then staying on line through abnormal conditions.

Consult your sales engineer for more details.

## Factory Testing Means Trouble-Free Start-up

All Sintesis chillers are given a complete functional test at the factory. This computer-based test program completely checks the sensors, wiring, electrical components, microprocessor function, communication capability, expansion valve performance, and fans. In addition, each compressor is run-tested to verify capacity and efficiency. The result of this test program is that the chiller arrives at the job site fully tested and ready for operation.

## Microchannel Condenser Coils

Microchannel condensing coils are all-aluminum coils with fully-brazed construction. This design reduces risk of leaks and provides increased coil rigidity — making them more rugged on the jobsite.

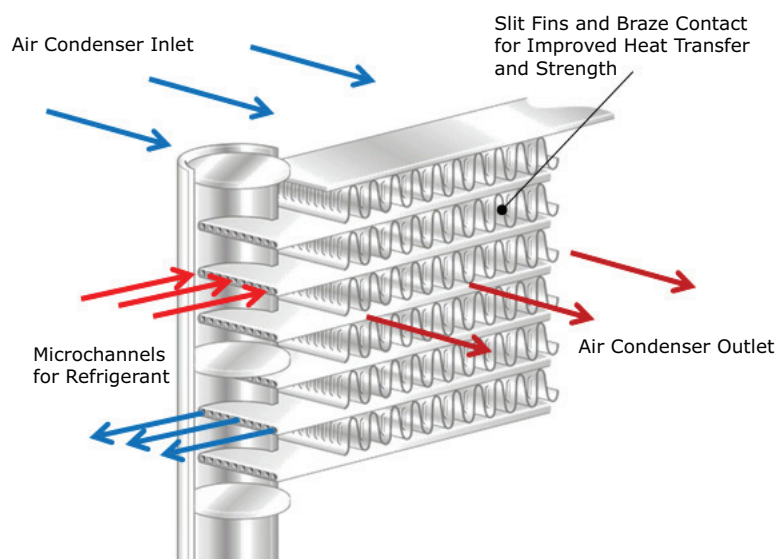
Microchannel all-aluminum construction provides several additional benefits:

- Light weight (simplifies coil handling)
- Easy to recycle
- Minimize galvanic corrosion

Their flat streamlined tubes with small ports and metallurgical tube-to-fin bond allow for exceptional heat transfer.

Bottom line, less refrigerant is being used, which creates a healthier and greener environment.

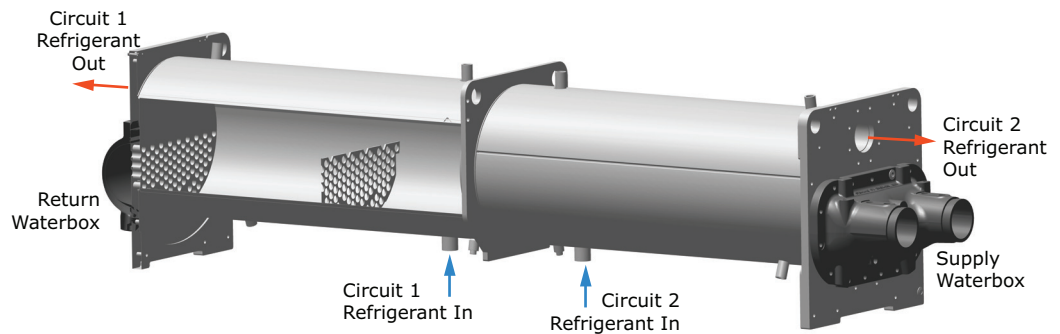
**Figure 2. Microchannel condensing coils**



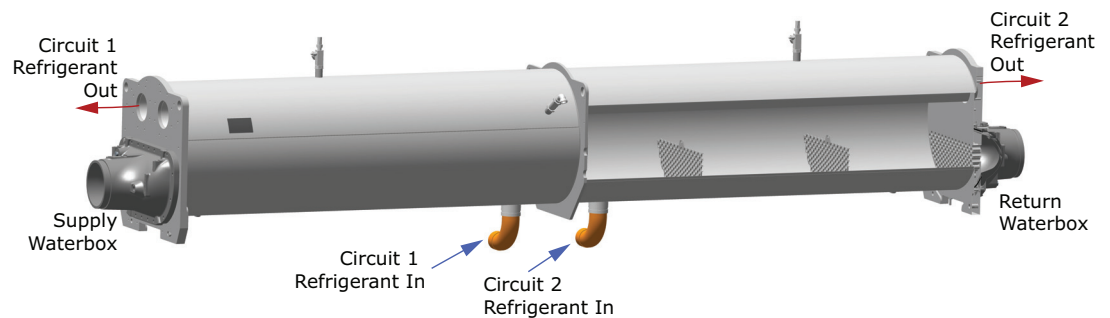
## CHIL evaporator

Compact - High performance - Integrated design - Low refrigerant charge (CHIL) evaporator optimizes the flow of refrigerant for excellent heat transfer and minimizes the volume of refrigerant used.

**Figure 3. CHIL evaporator, 115 to 250 ton units, 2-pass,**



**Figure 4. CHIL evaporator, 280 to 500 tons, 1-pass**



## Fans

Sintesis chillers use Electronically Commutated (EC) fans in order to reduce power consumption at full load and at part load. EC fans allow a significant reduction of sound level and a better operation of the chiller at low ambient conditions.

## Precision Control

- New 7 inch color touch screen display with graphics
- Powered by UC800 industry-leading control algorithms
  - Enhanced flow management provides unmatched system performance in variable flow water systems
- Adaptive Control™ keeps the chiller running in extreme conditions
  - Tight set point control
  - Graphical trending
  - Maximized chiller update
- BACnet®, Modbus™, LonTalk®, communications protocol interface available without the need for gateways
- Optional condenser fan speed control to help meet preset nighttime sound requirements



# Application Consideration

Certain application constraints should be considered when sizing, selecting, and installing Trane Sintesis™ chillers. Unit and system reliability is often dependent on properly and completely complying with these considerations. When the application varies from the guidelines presented, it should be reviewed with your local sales engineer.

## Unit Sizing

Unit capacities are listed in the performance data section. Intentionally oversizing a unit to ensure adequate capacity is not recommended. Erratic system operation and excessive compressor cycling are often a direct result of an oversized chiller. In addition, an oversized unit is usually more expensive to purchase, install, and operate. If oversizing is desired, consider using two units.

## Water Treatment

Dirt, scale, products of corrosion, and other foreign material will adversely affect heat transfer between the water and system components. Foreign matter in the chilled-water system can also increase pressure drop and, consequently, reduce water flow. Proper water treatment must be determined locally, depending on the type of system and local water characteristics. Neither salt nor brackish water is recommended for use in Trane Sintesis chillers. Use of either will lead to a shortened chiller life. Trane encourages the employment of a reputable water-treatment specialist, familiar with local water conditions, to assist in this determination and in the establishment of a proper water-treatment program.

## Effect of Altitude on Capacity

At elevations substantially above sea level, the decreased air density will reduce condenser capacity and, therefore, unit capacity and efficiency.

## Ambient Limitations

Trane Sintesis chillers are designed for year-round operation over a range of ambient temperatures. For operation outside of these ranges, contact the local sales office.

- Standard Ambient Range = 14 to 115°F (-10 to 46°C)
- Low Ambient Range = -4 to 115°F (-20 to 46°C)
- High Ambient Range = 14 to 130°F (-10 to 54.4°C)
- Wide Ambient Range = -4 to 130°F (-20 to 54.4°C)

The minimum ambient temperatures are based on still conditions (winds not exceeding five mph). Greater wind speeds will result in a drop in head pressure, therefore increasing the minimum starting and operating ambient temperature. The Adaptive Frequency™ microprocessor will attempt to keep the chiller on-line when high or low ambient conditions exist, making every effort to avoid nuisance trip-outs and provide the maximum allowable tonnage.

## Water Flow Limits

The minimum water flow rates are given in [Table 1, p. 16](#). Evaporator flow rates below the tabulated values will result in laminar flow and cause freeze-up problems, scaling, stratification, and poor control.

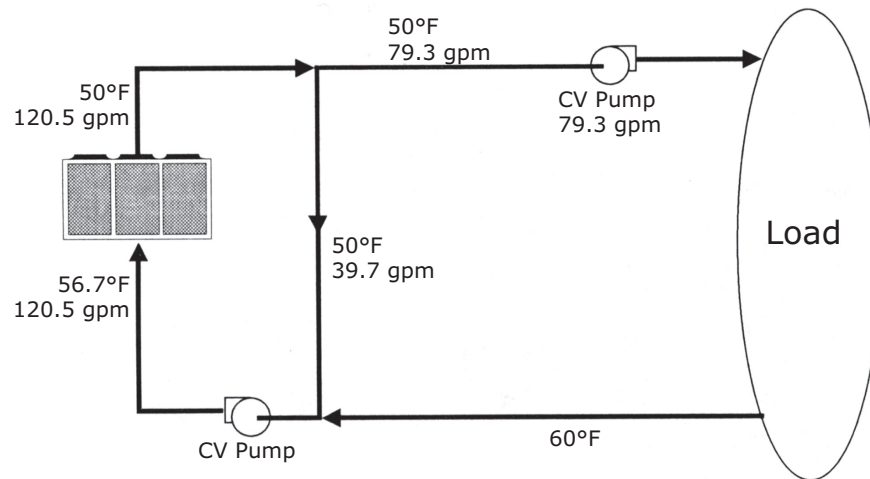
The maximum evaporator water flow rate is also given in the general data section. Flow rates exceeding those listed may result in excessive tube erosion.

**Note:** Flow rates in General data tables are for water only. They do not include glycol.

## Flow Rates Out of Range

Many process cooling jobs require flow rates that cannot be met with the minimum and maximum published values for the evaporator. A simple piping change can alleviate this problem. For example: a plastic injection molding process requires 80 gpm (5.0 l/s) of 50°F (10°C) water and returns that water at 60°F (15.6°C). The selected chiller can operate at these temperatures, but has a minimum flow rate of 120 gpm (7.6 l/s). The following system can satisfy the process.

**Figure 5. Flow rate out of range**



### Flow Proving

Trane provides a factory-installed water flow switch monitored by UC800 which protects the chiller from operating in loss of flow conditions.

### Flow Control

Trane requires the chilled water flow control in conjunction with the Sintesis™ Chiller to be done by the chiller. This will allow the chiller to protect itself in potentially harmful conditions.

### Leaving-Water Temperature Limits

Sintesis RTAF chillers have three distinct leaving water categories:

- Standard, with a leaving solution range of 40 to 68°F (4.4 to 20°C)
- Low temperature process cooling, with leaving solution less than 40°F (4.4°C)
- Ice-making, with a leaving solution range of 10.4 to 68°F (-12 to 20°C)

Since leaving solution temperatures below 40°F (4.4°C) result in suction temperature at or below the freezing point of water, a glycol solution is required for all low temperature and ice-making machines. Ice making control includes dual setpoints and safeties for ice making and standard cooling capabilities. Consult your local Trane account manager for applications or selections involving low temperature or ice making machines.

The maximum water temperature that can be circulated through the evaporator when the unit is not operating is 125°F (51.7°C). Evaporator damage may result above this temperature.

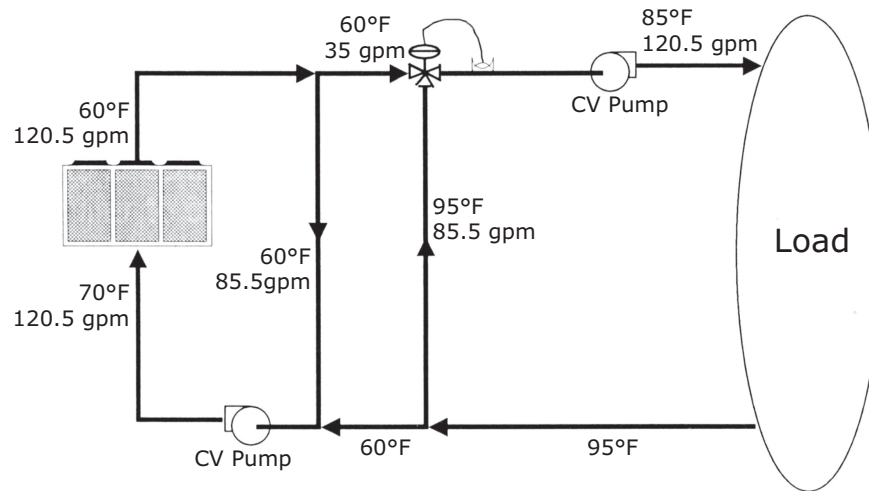
### Leaving-Water Temperature Out of Range

Many process cooling jobs require temperature ranges that cannot be met with the minimum and maximum published values for the RTAF evaporator. A simple piping change can alleviate this problem. For example: a laboratory load requires 120 gpm (7.6 l/s) of water entering the process at 85°F (29.4°C) and returning at 95°F (35°C). The accuracy required is higher than the cooling



tower can give. The selected chiller has adequate capacity, but has a maximum leaving-chilled-water temperature of 64°F (18°C). In the example shown, both the chiller and process flow rates are equal. This is not necessary. For example, if the chiller had a higher flow rate, there would be more water bypassing and mixing with warm water.

**Figure 6. Leaving water temperature flow rate out of range**



### Series Chiller Arrangements

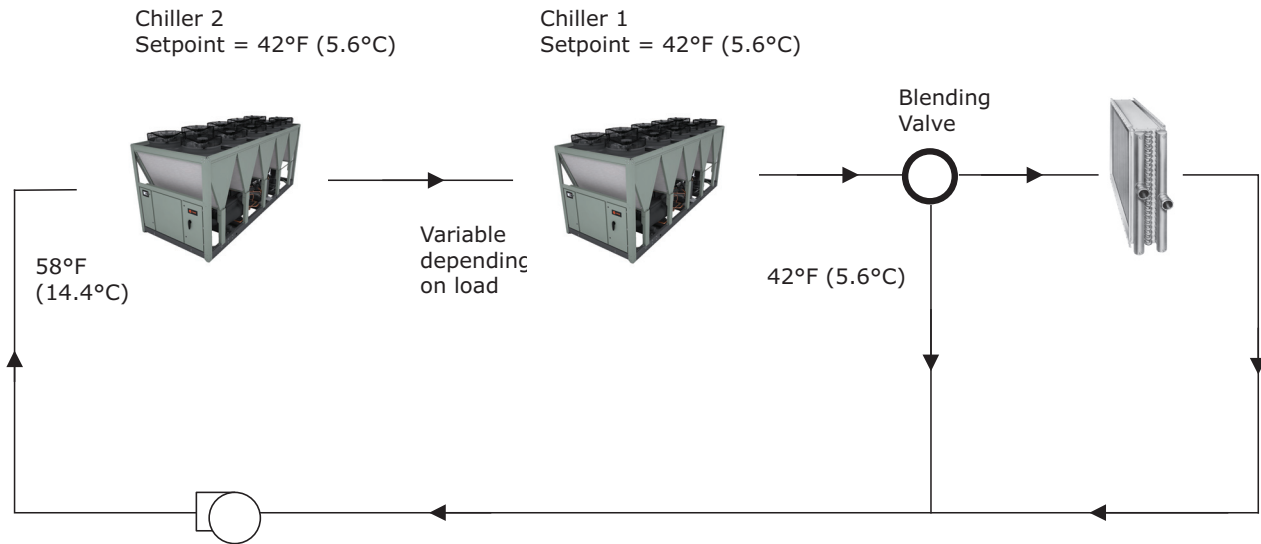
Another energy saving strategy is to design the system around chillers arranged in series. The actual savings possible with such strategies depends on the application dynamics and should be researched by consulting your Trane Systems Solutions Representative and applying an analysis tool from the Trace software family. It is possible to operate a pair of chillers more efficiently in a series chiller arrangement than in a parallel arrangement. It is also possible to achieve higher entering to leaving chiller differentials, which may, in turn, provide the opportunity for lower chilled water design temperature, lower design flow, and resulting installation and operational cost savings. The Trane screw compressor also has excellent capabilities for “lift,” which affords an opportunity for “lift,” which affords an opportunity for savings on the evaporator water loop.

Series chiller arrangements can be controlled in several ways. Figure 7 shows a strategy where each chiller is trying to achieve the system design set point. If the cooling load is less than 50 percent of the systems capabilities, either chiller can fulfill the demand. As system loads increase, the Chiller 2 becomes preferentially loaded as it attempts to meet the leaving chilled water setpoint. Chiller 1 will finish cooling the leaving water from Chiller 2 down to the system design setpoint.

Staggering the chiller set points is another control technique that works well for preferentially loading Chiller 1. If the cooling load is less than 50 percent of the system capacity, Chiller 1 would be able to satisfy the entire call for cooling. As system loads increase, Chiller 2 is started to meet any portion of the load that Chiller 1 can not meet.

## Application Consideration

**Figure 7. Typical series chiller arrangement**



### Typical Water Piping

All building water piping must be flushed prior to making final connections to the chiller. To reduce heat loss and prevent condensation, insulation should be applied. Expansion tanks are also usually required so that chilled water volume changes can be accommodated.

### Avoidance of Short Water Loops

Adequate chilled water system water volume is an important system design parameter because it provides for stable chilled water temperature control and helps limit unacceptable short cycling of chiller compressors.

The chiller's temperature control sensor is located in the waterbox. This location allows the building to act as a buffer to slow the rate of change of the system water temperature. If there is not a sufficient volume of water in the system to provide an adequate buffer, temperature control can suffer, resulting in erratic system operation and excessive compressor cycling.

Typically, a two-minute water loop circulation time is sufficient to prevent short water loop issues. Therefore, as a guideline, ensure the volume of water in the chilled water loop equals or exceeds two times the evaporator flow rate. For systems with a rapidly changing load profile the amount of volume should be increased.

If the installed system volume does not meet the above recommendations, the following items should be given careful consideration to increase the volume of water in the system and, therefore, reduce the rate of change of the return water temperature.

- A volume buffer tank located in the return water piping.
- Larger system supply and return header piping (which also reduces system pressure drop and pump energy use).

### Minimum water volume for a process application

If a chiller is attached to an on/off load such as a process load, it may be difficult for the controller to respond quickly enough to the very rapid change in return solution temperature if the system has only the minimum water volume recommended. Such systems may cause chiller low temperature safety trips or in the extreme case evaporator freezing. In this case, it may be necessary to add or increase the size of the mixing tank in the return line.

## Multiple Unit Operation

Whenever two or more units are used on one chilled water loop, Trane recommends that their operation be coordinated with a higher level system controller for optimum system efficiency and reliability. The Trane Tracer system has advanced chilled plant control capabilities designed to provide such operation.

## Ice Storage Operation

An ice storage system uses the chiller to make ice at night when utilities generate electricity more efficiently with lower demand and energy charges. The stored ice reduces or even replaces mechanical cooling during the day when utility rates are at their highest. This reduced need for cooling results in significant utility cost savings and source energy savings.

Another advantage of an ice storage system is its ability to eliminate chiller over sizing. A “right sized” chiller plant with ice storage operates more efficiently with smaller support equipment while lowering the connected load and reducing operating costs. Best of all this system still provides a capacity safety factor and redundancy by building it into the ice storage capacity for practically no cost compared to over sized systems.

The Trane air-cooled chiller is uniquely suited to low temperature applications like ice storage because of the ambient relief experienced at night. Chiller ice making efficiencies are typically similar to or even better than standard cooling daytime efficiencies as a result of night-time dry-bulb ambient relief.

Standard smart control strategies for ice storage systems are another advantage of the Sintesis chiller. The dual mode control functionality is integrated right into the chiller. Trane Tracer building management systems can measure demand and receive pricing signals from the utility and decide when to use the stored cooling and when to use the chiller.

## Unit Placement

### Setting The Unit

A base or foundation is not required if the selected unit location is level and strong enough to support the unit’s operating weight. (See “Weights,” p. 46.)

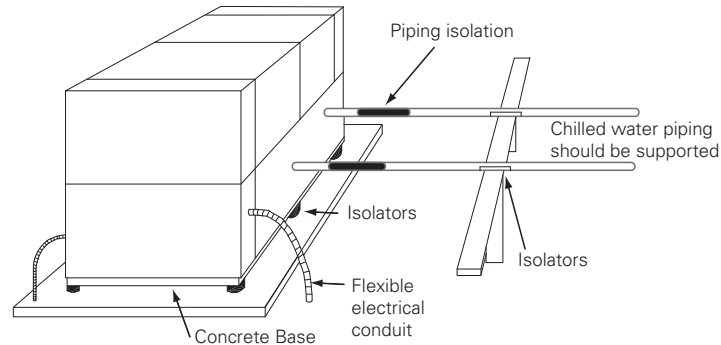
For a detailed discussion of base and foundation construction, see the sound engineering bulletin or the unit IOM. Manuals are available through online product portal pages or from your local office.

HVAC equipment must be located to minimize sound and vibration transmission to the occupied spaces of the building structure it serves. If the equipment must be located in close proximity to a building, it should be placed next to an unoccupied space such as a storage room, mechanical room, etc. It is not recommended to locate the equipment near occupied, sound sensitive areas of the building or near windows. Locating the equipment away from structures will also prevent sound reflection, which can increase sound levels at property lines or other sensitive points.

### Isolation and Sound Emission

Structurally transmitted sound can be reduced by elastomeric vibration eliminators. Elastomeric isolators are generally effective in reducing vibratory noise generated by compressors, and therefore, are recommended for sound sensitive installations. An acoustical engineer should always be consulted on critical applications.

**Figure 8. Installation example**



For maximum isolation effect, water lines and electrical conduit should also be isolated. Wall sleeves and rubber isolated piping hangers can be used to reduce sound transmitted through water piping. To reduce the sound transmitted through electrical conduit, use flexible electrical conduit.

Local codes on sound emissions should always be considered. Since the environment in which a sound source is located affects sound pressure, unit placement must be carefully evaluated. Sound power levels for chillers are available on request.

### Servicing

Adequate clearance for evaporator, condenser and compressor servicing should be provided. Recommended minimum space envelopes for servicing are located in the dimensional data section and can serve as a guideline for providing adequate clearance. The minimum space envelopes also allow for control panel door swing and routine maintenance requirements. Local code requirements may take precedence.

## Unit Location

### General

Unobstructed flow of condenser air is essential to maintain chiller capacity and operating efficiency. When determining unit placement, careful consideration must be given to assure a sufficient flow of air across the condenser heat transfer surface. Two detrimental conditions are possible and must be avoided: warm air recirculation and coil starvation. Air recirculation occurs when discharge air from the condenser fans is recycled back to the condenser coil inlet. Coil starvation occurs when free airflow to the condenser is restricted.

Condenser coils and fan discharge must be kept free of snow or other obstructions to permit adequate airflow for satisfactory unit operation. Debris, trash, supplies, etc., should not be allowed to accumulate in the vicinity of the air-cooled chiller. Supply air movement may draw debris into the condenser coil, blocking spaces between coil fins and causing coil starvation.

Both warm air recirculation and coil starvation cause reductions in unit efficiency and capacity due to higher head pressures. The Sintesis™ chiller offers an advantage over competitive equipment in these situations. Operation is minimally affected in many restricted air flow situations due to its advanced Adaptive Control™ microprocessor which has the ability to understand the operating environment of the chiller and adapt to it by first optimizing its performance and then staying on line through abnormal conditions. For example, high ambient temperatures combined with a restricted air flow situation will generally not cause the chiller to shut down. Other chillers would typically shut down on a high pressure nuisance cut-out in these conditions.

Cross winds, those perpendicular to the condenser, tend to aid efficient operation in warmer ambient conditions. However, they tend to be detrimental to operation in lower ambients due to the accompanying loss of adequate head pressure. Special consideration should be given to low

ambient units. As a result, it is advisable to protect air-cooled chillers from continuous direct winds exceeding 10 mph (4.5 m/s) in low ambient conditions.

The recommended lateral clearances are depicted in the Close-Spacing and Restricted Airflow Engineering Bulletin RLC-PRB037\*-EN available on product portal pages or from your local office.

### **Provide Sufficient Unit-to-Unit Clearance**

Units should be separated from each other by sufficient distance to prevent warm air recirculation or coil starvation. Doubling the recommended single unit air-cooled chiller clearances will generally prove to be adequate. See Close-Spacing and Restricted Airflow Engineering Bulletin RLC-PRB037\*-EN for more information.

### **Walled Enclosure Installations**

When the unit is placed in an enclosure or small depression, the top of the surrounding walls should be no higher than the top of the fans. The chiller should be completely open above the fan deck. There should be no roof or structure covering the top of the chiller. Ducting individual fans is not recommended. See Close-Spacing and Restricted Airflow Engineering Bulletin RLC-PRB037\*-EN for more information.



# Model Number Descriptions

## Digits 1, 2 – Unit Model

RT = Rotary Chiller

## Digit 3 – Unit Type

A = Air-cooled

## Digit 4 – Development Sequence

F = Development Sequence

## Digits 5-7 – Nominal Capacity

115 = 115 Nominal Tons  
130 = 130 Nominal Tons  
150 = 150 Nominal Tons  
170 = 170 Nominal Tons  
180 = 180 Nominal Tons  
200 = 200 Nominal Tons  
215 = 215 Nominal Tons  
230 = 230 Nominal Tons  
250 = 250 Nominal Tons  
280 = 280 Nominal Tons  
310 = 310 Nominal Tons  
350 = 350 Nominal Tons  
410 = 410 Nominal Tons  
450 = 450 Nominal Tons  
500 = 500 Nominal Tons

## Digit 8 – Unit Voltage

C = 380/60/3  
D = 400/50/3  
E = 460/60/3

## Digit 9 – Manufacturing Location

U = Trane Commercial Systems, Pueblo, CO USA

## Digits 10, 11 – Design Sequence

XX = Factory assigned

## Digit 12 – Unit Efficiency

H = High Efficiency

## Digit 13 – Unit Sound Package

X = Standard Noise

## Digit 14 – Agency Listing

U = UL/CUL Listing

## Digit 15 – Pressure Vessel Code

A = ASME Pressure Vessel Code  
C = CRN or Canadian Equivalent Pressure Vessel Code  
D = Australia Pressure Vessel Code

## Digit 16 – Factory Charge

1 = Refrigerant Charge R-513A  
2 = Refrigerant Charge R-134a  
3 = Nitrogen Charge (R-513A Field Supplied)  
4 = Nitrogen Charge (R-134a Field Supplied)

## Digit 17 – Evaporator Application

N = Standard Cooling (above 40°F/5.5°C)  
P = Low Temp Process Cooling (below 40°F/5.5°C)  
C = Ice Making

## Digit 18 – Evaporator Configuration

2 = 2-pass Evaporator  
T = 2-pass Evaporator with Turbulators  
1 = 1-pass Evaporator  
R = 1-pass Evaporator with Turbulators

## Digit 19 – Evaporator Fluid Type

1 = Water  
2 = Calcium Chloride  
3 = Ethylene Glycol  
4 = Propylene Glycol  
5 = Methanol

## Digit 20 – Water Connection

X = Grooved Pipe Connection  
W = Grooved Pipe + Flange

## Digit 21 – Flow Switch

1 = Factory Installed - Other Fluid 15 cm/s  
2 = Factory Installed - Water 35 cm/s  
3 = Factory Installed - Water 45 cm/s

## Digit 22 – Insulation

N = Factory Insulation All Cold Parts 0.75"

## Digit 23 – Unit Application

X = Standard Ambient (14 to 115°F/-10 to 46°C)  
L = Low Ambient (-4 to 115°F/-20 to 46°C)  
H = High Ambient (14 to 130°F/-10 to 54.4°C)  
W = Wide Ambient (-4 to 130°F/-20 to 54.4°C)

## Digit 24 – Condenser Fin Options

N = Aluminum Microchannel  
C = CompleteCoat™ Microchannel

## Digit 25 – Fan Type

C = Variable Speed Fans

## Digit 26 – Oil Cooler

C = Oil Cooler

## Digit 27 – Compressor Starter

V = Adaptive Frequency Drive

## Digit 28 – Incoming Power Line Connection

1 = Single Point Power Connection  
2 = Dual Point Power Connection

## Digit 29 – Power Line Connection Type

X = Terminal Block  
C = Circuit Breaker  
H = Circuit Breaker with High Fault Rated Control Panel

## Digit 30 – Short Circuit Current Rating

A = Default Amp Short Circuit Rating  
B = High Amp Short Circuit Rating

## Digit 31 – Electrical Accessories

X = No Convenience Outlet  
P = 15A 115V Convenience Outlet

## Digit 32 – Remote Communication Options

X = None  
B = BACnet® Interface  
M = Modbus™ Interface  
L = LonTalk® Interface

## Digit 33 – Hard Wire Communication

X = None  
A = Hard Wired Bundle - All  
B = Remote Leaving Water Temp Setpoint  
C = Remote Leaving Temp and Demand Limit Setpoints  
D = Programmable Relay  
E = Programmable Relay and Leaving Water and Demand Limit Setpoint  
F = Percent Capacity  
G = Percent Capacity and Leaving Water and Demand Limit Setpoint  
H = Percent Capacity and Programmable Relay

## Digit 34 – Energy Meter

X = None

## Digit 35 – Smart Flow Control

X = None

## Digit 36 – Structural Options

A = Standard Unit Structure

## Digit 37 – Appearance Options

X = No Appearance Options

## Model Number Descriptions

---

### **Digit 38 – Unit Isolation**

- X = None
- 1 = Elastomeric Isolators

### **Digit 39 – Shipping Package**

- X = No Shipping Package
- A = Containerization Package
- T = Shipped with Tarp Covering Full Unit

### **Digits 40-42**

XXX= Reserved for future use

### **Digit 43 – Special Requirement**

- 0 = None
- S = Special Requirement



# General Data

**Table 1. General data table**

Unit Size (tons)		115	130	150	170	180	200	215
<b>Compressor Model (ckt1/ckt 2)<sup>(a)</sup></b>		55/55	65/65	70/70	85/70	85/85	100/85	100/100
Quantity	#	2	2	2	2	2	2	2
<b>Evaporator</b>								
Water Connection Size	in	4	4	5	5	5	6	6
Passes	#	2	2	2	2	2	2	2
Water Storage	gal	14.0	15.8	19.3	20.6	21.6	21.9	23.9
	L	53.1	59.9	73.2	78.0	81.9	82.8	90.5
Minimum Flow	gpm	128	150	171	187	199	202	228
	l/s	8.1	9.5	10.8	11.8	12.6	12.8	14.4
Maximum Flow	gpm	470	551	626	684	731	742	835
	l/s	29.7	34.8	39.5	43.2	46.1	46.8	52.7
<b>Condenser</b>								
Qty of Coils (ckt 1/ckt 2)		5/5	5/5	6/6	6/6	6/6	7/7	7/7
Coil Length	in	77.4	77.4	77.4	77.4	77.4	77.4	77.4
	mm	1967	1967	1967	1967	1967	1967	1967
Coil Height	in	47.8	47.8	47.8	47.8	47.8	47.8	47.8
	mm	1214	1214	1214	1214	1214	1214	1214
<b>Condenser Fans</b>								
Quantity (ckt 1/ckt 2)	#	5/5	5/5	6/6	6/6	6/6	7/7	7/7
Diameter	in	31.5	31.5	31.5	31.5	31.5	31.5	31.5
	mm	800	800	800	800	800	800	800
Nominal speed	rpm	810	810	810	810	810	909	909
Airflow	cfm	9959	9959	9959	9959	9959	11230	11230
	m <sup>3</sup> /s	4.7	4.7	4.7	4.7	4.7	5.3	5.3
Tip Speed	ft/min	6673	6673	6673	6673	6673	7500	7500
	m/s	33.9	33.9	33.9	33.9	33.9	38.1	38.1
<b>Ambient Temperature Range</b>								
Standard Ambient	°F (°C)	14 to 115 (-10 to 46)						
Low Ambient	°F (°C)	-4 to 115 (-20 to 46)						
High Ambient	°F (°C)	14 to 130 (-10 to 54.4)						
Wide Ambient	°F (°C)	-4 to 130 (-20 to 54.4)						
<b>General Unit</b>								
Refrigerant		R-134a or R-513A						
Refrigerant Ckts	#	2	2	2	2	2	2	2
Minimum Load	%	15	15	15	15	15	15	15
Refrigerant Charge (ckt 1/ckt 2)	lb	86.4/ 84.9	86.6/ 84.9	101.4/ 99.0	111.1/ 99.0	109.0/ 96.3	134.3/129.4	134.7/129.8
	kg	39.2/38.5	39.3/38.5	46.0/44.9	50.4/44.9	49.5/43.7	60.9/58.7	61.1/59.0
Oil		Trane Oil 00311 (bulk)/OIL00315 (1 gal)/OIL00317 (5 gal)						
Oil Charge/ckt	gal	1.53	1.56	1.56	1.56	1.64	1.96	2.01
	L	5.8	5.9	5.9	5.9	6.2	7.4	7.6

(a) Nominal tonnage at 60 Hz.





## General Data

**Table 2. General data table**

Unit Size (tons)		230	250	280	310	350	410	450	500
<b>Compressor Model (ckt 1/ckt 2)<sup>(a)</sup></b>		120/100	120/120	100-100/70	100-100/100	100-120/120	100-100/100-100	100-120/100-120	120-120/120-120
Quantity	#	2	2	3	3	3	4	4	4
<b>Evaporator</b>									
Water Connection Size	in	6	6	8	8	8	8	8	8
Passes	#	2	2	1	1	1	1	1	1
Water Storage	(gal)	28.5	30.6	31.2	32.6	35.8	41.8	44.8	46.1
	(L)	107.7	115.9	118.1	123.3	135.4	158.1	169.5	174.7
Minimum Flow	(gpm)	261	288	304	323	367	446	487	506
	(l/s)	16.5	18.2	19.2	20.4	23.1	28.1	30.7	31.9
Maximum Flow	(gpm)	957	1055	1113	1183	1345	1635	1786	1855
	(l/s)	60.4	66.6	70.2	74.6	84.9	103.2	112.7	117.1
<b>Condenser</b>									
Qty of Coils (ckt 1/ckt 2)		7/7	7/7	12/6	14/6	14/6	12/12	14/14	14/14
Coil Length	(in)	77.4	77.4	77.4	77.4	77.4	77.4	77.4	77.4
	(mm)	1967	1967	1967	1967	1967	1967	1967	1967
Coil Height	(in)	47.8	47.8	47.8	47.8	47.8	47.8	47.8	47.8
	(mm)	1214	1214	1214	1214	1214	1214	1214	1214
<b>Condenser Fans</b>									
Quantity (ckt 1/ckt 2)	#	7/7	7/7	12/6	14/6	14/6	12/12	14/14	14/14
Diameter	(in)	31.5	31.5	31.5	31.5	31.5	31.5	31.5	31.5
	(mm)	800	800	800	800	800	800	800	800
Total Airflow	(cfm)	909	909	909	909	909	909	909	909
	(m <sup>3</sup> /hr)	11230	11230	11230	11230	11230	11230	11230	11230
Tip Speed	(ft/min)	5.3	5.3	5.3	5.3	5.3	5.3	5.3	5.3
	(M/S)	7500	7500	7500	7500	7500	7500	7500	7500
<b>Ambient Temperature Range</b>									
Standard Ambient	°F (°C)	14 to 115 (-10 to 46)							
Low Ambient	°F (°C)	-4 to 115 (-20 to 46)							
High Ambient	°F (°C)	14 to 130 (-10 to 54.4)							
Wide Ambient	°F (°C)	-4 to 130 (-20 to 54.4)							
<b>General Unit</b>									
Refrigerant		R-134a or R-513A							
Refrigerant Ckts	#	2	2	2	2	2	2	2	2
Minimum Load	%	15	15	15	15	15	15	15	15
Refrigerant Charge (ckt 1/ckt 2)	(lbs)	155.4/ 154.8	155.4/ 154.8	230.8/ 115.0	239.0/ 116.5	242.1/ 117.7	232.2/ 238.2	244.8/ 255.8	252.4/ 264.0
	(kg)	70.7/70.4	70.7/70.4	104.9/52.3	108.6/52.9	110.0/53.5	105.5/108.3	111.3/116.3	114.7/120.0
Oil		Trane Oil 00311 (bulk)/OIL00315 (1 gal)/OIL00317 (5 gal)							
Oil Charge (ckt 1/ckt 2)	(gal)	2.35/2.35	2.35/2.35	4.24/1.72	4.26/2.17	4.27/2.17	4.26/4.29	4.30/4.33	4.33/4.37
	(L)	8.9/8.9	8.9/8.9	16.1/6.5	16.1/8.2	16.2/8.2	16.1/16.2	16.3/16.4	16.4/16.5

(a) Nominal tonnage at 60 Hz. Where there are 2 compressors on a circuit, they are indicated 1A-1B/2A-2B.



# Controls

## Tracer UC800 Controller

Sintesis™ chillers offer predictive controls that anticipate and compensate for load changes. Other control strategies made possible with the Tracer™ UC800 controls are:

### Feedforward Adaptive Control

Feedforward is an open-loop, predictive control strategy designed to anticipate and compensate for load changes. It uses evaporator entering-water temperature as an indication of load change. This allows the controller to respond faster and maintain stable leaving-water temperatures.

### Soft Loading

The chiller controller uses soft loading except during manual operation. Large adjustments due to load or setpoint changes are made gradually, preventing the compressor from cycling unnecessarily. It does this by internally filtering the setpoints to avoid reaching the differential-to-stop or the demand limit. Soft loading applies to the leaving chilled-water temperature and demand limit setpoints.

### Adaptive Controls

Adaptive Controls directly sense the control variables that govern the operation of the chiller: evaporator pressure and condenser pressure. When any one of these variables approaches a limit condition when damage may occur to the unit or shutdown on a safety, Adaptive Controls takes corrective action to avoid shutdown and keep the chiller operating. This happens through combined actions of compressor and/or fan staging. Whenever possible, the chiller is allowed to continue making chilled water. This keeps cooling capacity available until the problem can be solved. Overall, the safety controls help keep the building or process running and out of trouble.

### Rapid Restart

A Rapid Restart™ is performed after a momentary power loss if it occurs during operation. Similarly, if the chiller shuts down on a non-latching diagnostic and the diagnostic later clears itself, a Rapid Restart will be initiated.

### AdaptiSpeed Control

Compressor speed is used to control capacity of the chiller, optimizing mathematically with the condenser fan speed to provide the highest level of performance. The increased performance of the UC800 Controller allows the chiller to operate longer at higher efficiency, and with greater stability.

## Tracer AdaptiView TD7 Operator Interface

The standard Tracer AdaptiView™ TD7 display provided with the Trane UC800 controller features a 7" LCD touch-screen, allowing access to all operational inputs and outputs. This is an advanced interface that allows the user to access any important information concerning setpoints, active temperatures, modes, electrical data, pressure, and diagnostics. It uses full text display available in 26 languages.

### Display Features Include:

- LCD touch-screen with LED backlighting, for scrolling access to input and output operating information
- Single-screen, folder/tab-style display of all available information on individual components (evaporator, condenser, compressor, etc.)
- Manual override indication
- Password entry/lockout system to enable or disable display
- Automatic and immediate stop capabilities for standard or immediate manual shutdown
- Fast, easy access to available chiller data in tabbed format, including:
  - Easy to view Operating Modes
  - Logical Sub-Component Reports:
    - Evaporator
    - Condenser
    - Compressor
    - Motor
  - 3 User Programmable Custom Reports
  - ASHRAE report
  - Logsheet Report
  - Alarms Report
  - 8 pre-defined Standard Graphs
  - 4 User Programmable Custom Graphs
  - Chiller Settings
  - Feature Settings
  - Chilled Water Reset
  - Manual Control Settings
  - Globalization Settings
  - Support of 26 languages
  - Brightness Setting
  - Cleaning Mode

## Tracer TU Interface

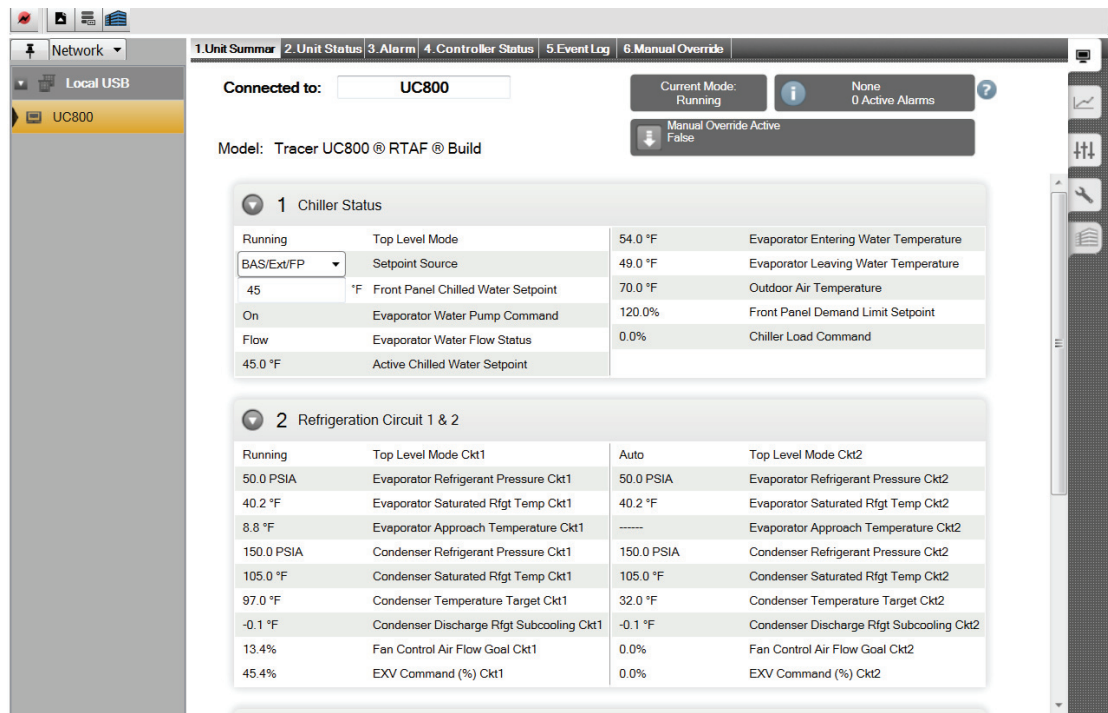
Tracer™ TU (non-Trane personnel, contact your local Trane office for software) adds a level of sophistication that improves service technician effectiveness and minimizes chiller downtime. The portable PC-based service-tool software, Tracer TU, supports service and maintenance tasks. Tracer TU serves as a common interface to all Trane® chillers, and will customize itself based on the properties of the chiller with which it is communicating. Thus, the service technician learns only one service interface. The panel bus is easy to troubleshoot using LED sensor verification. Only the defective device is replaced. Tracer TU can communicate with individual devices or groups of devices. All chiller status, machine configuration settings, customizable limits, and up to 100 active or historic diagnostics are displayed through the service-tool software interface. LEDs and their respective Tracer TU indicators visually confirm the availability of each connected sensor, relay, and actuator.

Tracer TU is designed to run on a customer's laptop, connected to the Tracer TD7 control panel with a USB cable. Your laptop must meet the following hardware and software requirements:

- 1 GB RAM (minimum)
- 1024 x 768 screen resolution
- CD-ROM drive
- Ethernet 10/100 LAN card
- An available USB 2.0 port
- Microsoft® Windows® XP Professional operation system with Service Pack 3 (SP3) or Windows 7 Enterprise or Professional operating system (32-bit or 64-bit)
- Microsoft.NET Framework 4.0 or later

Note: Tracer TU is designed and validated for this minimum laptop configuration. Any variation from this configuration may have different results. Therefore, support for Tracer TU is limited to only those laptops with the configuration previously specified.

**Figure 9. Tracer TU interface screen**



The screenshot displays the Tracer TU software interface. At the top, there are navigation tabs: 1. Unit Summary, 2. Unit Status, 3. Alarm, 4. Controller Status, 5. Event Log, and 6. Manual Override. The 'Unit Summary' tab is active. The interface shows the following information:

- Connected to:** UC800
- Current Mode:** Running
- None 0 Active Alarms**
- Manual Override Active:** False
- Model:** Tracer UC800® RTAF® Build

**1 Chiller Status**

Running	Top Level Mode	54.0 °F	Evaporator Entering Water Temperature
BAS/Ext/FP	Setpoint Source	49.0 °F	Evaporator Leaving Water Temperature
45	°F Front Panel Chilled Water Setpoint	70.0 °F	Outdoor Air Temperature
On	Evaporator Water Pump Command	120.0%	Front Panel Demand Limit Setpoint
Flow	Evaporator Water Flow Status	0.0%	Chiller Load Command
45.0 °F	Active Chilled Water Setpoint		

**2 Refrigeration Circuit 1 & 2**

Running	Top Level Mode Ckt1	Auto	Top Level Mode Ckt2
50.0 PSIA	Evaporator Refrigerant Pressure Ckt1	50.0 PSIA	Evaporator Refrigerant Pressure Ckt2
40.2 °F	Evaporator Saturated Rfght Temp Ckt1	40.2 °F	Evaporator Saturated Rfght Temp Ckt2
8.8 °F	Evaporator Approach Temperature Ckt1	-----	Evaporator Approach Temperature Ckt2
150.0 PSIA	Condenser Refrigerant Pressure Ckt1	150.0 PSIA	Condenser Refrigerant Pressure Ckt2
105.0 °F	Condenser Saturated Rfght Temp Ckt1	105.0 °F	Condenser Saturated Rfght Temp Ckt2
97.0 °F	Condenser Temperature Target Ckt1	32.0 °F	Condenser Temperature Target Ckt2
-0.1 °F	Condenser Discharge Rfght Subcooling Ckt1	-0.1 °F	Condenser Discharge Rfght Subcooling Ckt2
13.4%	Fan Control Air Flow Goal Ckt1	0.0%	Fan Control Air Flow Goal Ckt2
45.4%	EXV Command (%) Ckt1	0.0%	EXV Command (%) Ckt2

## System Integration

### Stand-Alone Controls

Single chillers installed in applications without a building management system are simple to install and control: only a remote auto/stop for scheduling is required for unit operation. Signals from the chilled-water pump contactor auxiliary, or a flow switch, are wired to the chilled-water flow interlock. Signals from a time clock or some other remote device are wired to the external auto/stop input.

- Auto/Stop: A job-site provided contact closure turns the unit on and off.
- Emergency Stop: A job-site provided contact opening wired to this input turns the unit off and requires a manual reset of the unit microcomputer. This closure is typically triggered by a job-site provided system such as a fire alarm.

### Hardwire Points

Microcomputer controls allow simple interface with other control systems, such as time clocks, building automation systems, and ice storage systems via hardwire points. This means you have the flexibility to meet job requirements while not having to learn a complicated control system. Remote devices are wired from the control panel to provide auxiliary control to a building automation system. Inputs and outputs can be communicated via a typical 4–20 mA electrical signal, an equivalent 2–10 V dc signal, or by utilizing contact closures. This setup has the same features as a stand-alone water chiller, with the possibility of having additional optional features:

- Ice making control.
- External chilled water setpoint, external demand limit setpoint
- Chilled water temperature reset.
- Programmable relays - available outputs are: alarm-latching, alarm-auto reset, general alarm-warning, chiller limit mode, compressor running, and Tracer control, Service Request.

### BACnet Interface

Tracer AdaptiView™ control can be configured for BACnet® communications at the factory or in the field. This enables the chiller controller to communicate on a BACnet MS/TP network. Chiller setpoints, operating modes, alarms, and status can be monitored and controlled through BACnet. Tracer TD7 controls conforms to the BACnet B-ASC profile as defined by ASHRAE 135-2004.

### LonTalk Communications Interface (LCI-C)

The optional LonTalk® Communications Interface for Chillers (LCI-C) is available factory or field installed. It is an integrated communication board that enables the chiller controller to communicate over a LonTalk network. The LCI-C is capable of controlling and monitoring chiller setpoints, operating modes, alarms, and status. The Trane LCI-C provides additional points beyond the standard LONMARK® defined chiller profile to extend interoperability and support a broader range of system applications. These added points are referred to as open extensions. The LCI-C is certified to the LONMARK Chiller Controller Functional Profile 8040 version 1.0, and follows LonTalk FTT-10A free topology communications.

### Modbus Interface

Tracer AdaptiView™ control can be configured for Modbus™ communications at the factory or in the field. This enables the chiller controller to communicate as a slave device on a Modbus network. Chiller setpoints, operating modes, alarms, and status can be monitored and controlled by a Modbus master device.

## Tracer SC

The Tracer SC system controller acts as the central coordinator for all individual equipment devices on a Tracer building automation system. The Tracer SC scans all unit controllers to update information and coordinate building control, including building subsystems such as VAV and chiller water systems. With this system option, the full breadth of Trane's HVAC and controls experience are applied to offer solutions to many facility issues. The LAN allows building operators to manage these varied components as one system from any personal computer with web access.

The benefits of this system are:

- Improved usability with automatic data collection, enhanced data logging, easier to create graphics, simpler navigation, pre-programmed scheduling, reporting, and alarm logs.
- Flexible technology allows for system sizes from 30-120 unit controllers with any combination of LonTalk or BACnet® unit controllers.
- LEED certification through site commissioning report, energy data collection measurement, optimizing energy performance, and maintaining indoor air quality.

Energy savings programs include: fan pressure optimization, ventilation reset, and chiller plant control (adds and subtracts chillers to meet cooling loads).

## Building Automation and Chiller Plant Control

The UC800 controller can communicate with Trane Tracer Summit, Tracer SC and Tracer ES building automation systems, which include pre-engineered and flexible control for chiller plants. These building automation systems can control the operation of the complete installation: chillers, pumps, isolating valves, air handlers, and terminal units. Trane can undertake full responsibility for optimized automation and energy management for the entire chiller plant. The main functions are:

- **Chiller sequencing:** equalizes the number of running hours of the chillers. Different control strategies are available depending on the configuration of the installation.
- **Control of the auxiliaries:** includes input/output modules to control the operation of the various auxiliary equipment (water pumps, valves, etc.).
- **Time-of-day scheduling:** allows the end user to define the occupancy period, for example: time of the day, holiday periods and exception schedules.
- **Optimization of the installation start/stop time:** based on the programmed schedule of occupancy and the historical temperature records. Tracer Summit and Tracer SC calculate the optimal start/stop time of the installation to get the best compromise between energy savings and comfort of the occupants.
- **Soft loading:** the soft loading function minimizes the number of chillers that are operated to satisfy a large chilled-water-loop pull down, thus preventing an overshoot of the actual capacity required. Unnecessary starts are avoided and the peak current demand is lowered.
- **Communication capabilities:** local, through a PC workstation keyboard. Tracer Summit and Tracer SC can be programmed to send messages to other local or remote workstations and or a pager in the following cases:
  - Analog parameter exceeding a programmed value
  - Maintenance warning
  - Component failure alarm
  - Critical alarm messages. In this latter case, the message is displayed until the operator acknowledges the receipt of the information. From the remote station it is also possible to access and modify the chiller plants control parameters.
- **Remote communication through a modem:** as an option, a modem can be connected to communicate the plant operation parameters through voice grade phone lines. A remote terminal is a PC workstation equipped with a modem and software to display the remote plant parameters.

## **Integrated Comfort System (ICS)**

The onboard Tracer chiller controller is designed to be able to communicate with a wide range of building automation systems. In order to take full advantage of chiller's capabilities, incorporate your chiller into a Tracer Summit or Tracer SC building automation system. But the benefits do not stop at the chiller plant. At Trane, we realize that all the energy used in your cooling system is important. That is why we worked closely with other equipment manufacturers to predict the energy required by the entire system. We used this information to create patented control logic for optimizing HVAC system efficiency. The building owners challenge is to tie components and applications expertise into a single reliable system that provides maximum comfort, control, and efficiency. Trane Integrated Comfort systems (ICS) are a concept that combines system components, controls, and engineering applications expertise into a single, logical, and efficient system. These advanced controls are fully commissioned and available on every piece of Trane® equipment, from the largest chiller to the smallest VAV box. As a manufacturer, only Trane offers this universe of equipment, controls, and factory installation and verification.



# Electrical

## Electrical Data

**Table 3. Electrical data, 115 to 250 ton — single point power**

Unit Size (tons)	Rated Voltage (a)	Condenser Fans			CPT Amps	Drive Input Amps		MCA <sup>(c)</sup>	MOP <sup>(d)</sup>	Default Short Circuit Rating (kA)		High Fault Short Circuit Rating (kA)	
		Qty (b)	HP	FLA		Ckt 1	Ckt 2			Term Block	Circuit Breaker <sup>(e)</sup>	Circuit Breaker <sup>(f)</sup>	High Fault Ckt Breaker
115	380/60/3	5/5	3	3.4	2.7	113	113	291	400	10	10	35	65
	460/60/3	5/5	3	2.8	2.2	94	94	242	300	10	10	35	65
	400/50/3	5/5	3	3.5	2.5	108	108	281	350	10	10	35	65
130	380/60/3	5/5	3	3.4	2.7	134	134	339	450	10	10	35	65
	460/60/3	5/5	3	2.8	2.2	111	111	280	350	10	10	35	65
	400/50/3	5/5	3	3.5	2.5	127	127	324	450	10	10	35	65
150	380/60/3	6/6	3	3.4	2.7	157	157	397	500	10	10	35	65
	460/60/3	6/6	3	2.8	2.2	130	130	329	450	10	10	35	65
	400/50/3	6/6	3	3.5	2.5	149	149	380	500	10	10	35	65
170	380/60/3	6/6	3	3.4	2.7	184	157	431	600	10	10	35	65
	460/60/3	6/6	3	2.8	2.2	152	130	356	500	10	10	35	65
	400/50/3	6/6	3	3.5	2.5	174	149	411	500	10	10	35	65
180	380/60/3	6/6	3	3.4	2.7	184	184	458	600	10	10	35	65
	460/60/3	6/6	3	2.8	2.2	152	152	378	500	10	10	35	65
	400/50/3	6/6	3	3.5	2.5	174	174	436	600	10	10	35	65
200	380/60/3	7/7	3	3.4	2.7	221	184	511	700	10	10	35	65
	460/60/3	7/7	3	2.8	2.2	183	152	423	600	10	10	35	65
	400/50/3	7/7	3	3.5	2.5	210	174	488	600	10	10	35	65
215	380/60/3	7/7	3	3.4	2.7	221	221	548	700	10	10	35	65
	460/60/3	7/7	3	2.8	2.2	183	183	454	600	10	10	35	65
	400/50/3	7/7	3	3.5	2.5	210	210	524	700	10	10	35	65
230	380/60/3	7/7	3	3.4	2.7	267	221	606	800	10	10	35	65
	460/60/3	7/7	3	2.8	2.2	220	183	500	700	10	10	35	65
	400/50/3	7/7	3	3.5	2.5	253	210	578	800	10	10	35	65
250	380/60/3	7/7	3	3.4	2.7	267	267	652	900	10	10	35	65
	460/60/3	7/7	3	2.8	2.2	220	220	537	700	10	10	35	65
	400/50/3	7/7	3	3.5	2.5	253	253	621	800	10	10	35	65

(a) Voltage Utilization Range: +/- 10% of Rated voltage (use range): 380/60/3 (342-418), 400/50/3 (360-440), 460/60/3 (414-506)

(b) Number of fans is indicated by ckt 1/ckt 2.

(c) MCA - Minimum Circuit Ampacity - 125 percent of largest compressor VFD input plus 100 percent of all other loads.

(d) Max fuse or MOPD = 225 percent of largest compressor VFD input plus 100 percent of second compressor VFD input, plus sum of condenser fan FLAs and CPT amps.

(e) This circuit breaker is selected if unit model number digits 29 and 30 are CA.

(f) This circuit breaker is selected if unit model number digits 29 and 30 are CB.



**Table 4. Electrical data, 280 to 500 ton units**

Unit Size (tons)	Rated Voltage (a)	Condenser Fans			CPT Amps (b)	Input Amps				MCA <sup>(c)</sup>		MOP <sup>(d)</sup>		Default Short Circuit Rating (kA)		High Fault Short Circuit Rating (kA)	
		Qty (e)	HP	FLA		1A Drive	1B Y-D	2A Drive	2B Y-D	Ckt 1	Ckt 2	Ckt 1	Ckt 2	Term Block	Circuit Breaker <sup>(f)</sup>	Circuit Brkr <sup>(g)</sup>	High Fault Ckt Bkr
<b>Single Point Power</b>																	
280	380/60/3	12/6	3	3.4	2.7	221	243	157	-	749		900		10	10	10	10
	460/60/3	12/6	3	2.8	2.2	183	201	130	-	620		800		10	10	10	10
310	380/60/3	14/6	3	3.4	2.7	221	243	221	-	820		1000		10	10	10	10
	460/60/3	14/6	3	2.8	2.2	183	201	183	-	678		800		10	10	10	10
350	380/60/3	14/6	3	3.4	2.7	221	293	267	-	928		1200		10	10	10	10
	460/60/3	14/6	3	2.8	2.2	183	242	220	-	766		1000		10	10	10	10
410	460/60/3	12/12	3	2.8	2.2	183	201	183	201	890		1000		10	10	10	10
<b>Dual Point Power</b>																	
280	380/60/3	12/6	3	3.4	2.7	221	243	157	-	569	220	800	350	10	10	35	65
	460/60/3	12/6	3	2.8	2.2	183	201	130	-	471	182	600	300	10	10	35	65
310	380/60/3	14/6	3	3.4	2.7	221	243	221	-	576	300	800	500	10	10	35	65
	460/60/3	14/6	3	2.8	2.2	183	201	183	-	476	248	600	400	10	10	35	65
350	380/60/3	14/6	3	3.4	2.7	221	293	267	-	638	357	900	600	10	10	35	65
	460/60/3	14/6	3	2.8	2.2	183	242	220	-	527	294	700	500	10	10	35	65
410	380/60/3	12/12	3	3.4	2.7	221	243	221	243	569	569	800	800	10	10	35	65
	460/60/3	12/12	3	2.8	2.2	183	201	183	201	471	471	600	600	10	10	35	65
450	380/60/3	14/14	3	3.4	2.7	221	293	221	293	638	638	900	900	10	10	35	65
	460/60/3	14/14	3	2.8	2.2	183	242	183	242	527	527	700	700	10	10	35	65
500	380/60/3	14/14	3	3.4	2.7	267	293	267	293	684	684	900	900	10	10	35	65
	460/60/3	14/14	3	2.8	2.2	220	242	220	242	564	564	800	800	10	10	35	65

(a) Voltage Utilization Range: +/- 10% of Rated voltage (use range): 380/60/3 (342-418), 460/60/3 (414-506)

(b) CPT amps is the same for circuit 1 and circuit 2.

(c) MCA - Minimum Circuit Ampacity - 125 percent of largest compressor load (larger of VFD input or fixed speed amps) plus 100 percent of all other loads.

(d) Max fuse or MOPD = 225 percent of largest compressor load (larger of VFD input or fixed speed amps) plus 100 percent of second compressor VFD input, plus sum of condenser fan FLAs and CPT amps.

(e) Number of fans is indicated by ckt 1/ckt 2.

(f) This circuit breaker is selected if unit model number digits 29 and 30 are CA.

(g) This circuit breaker is selected if unit model number digits 29 and 30 are CB.



## Electrical

# Customer Wiring

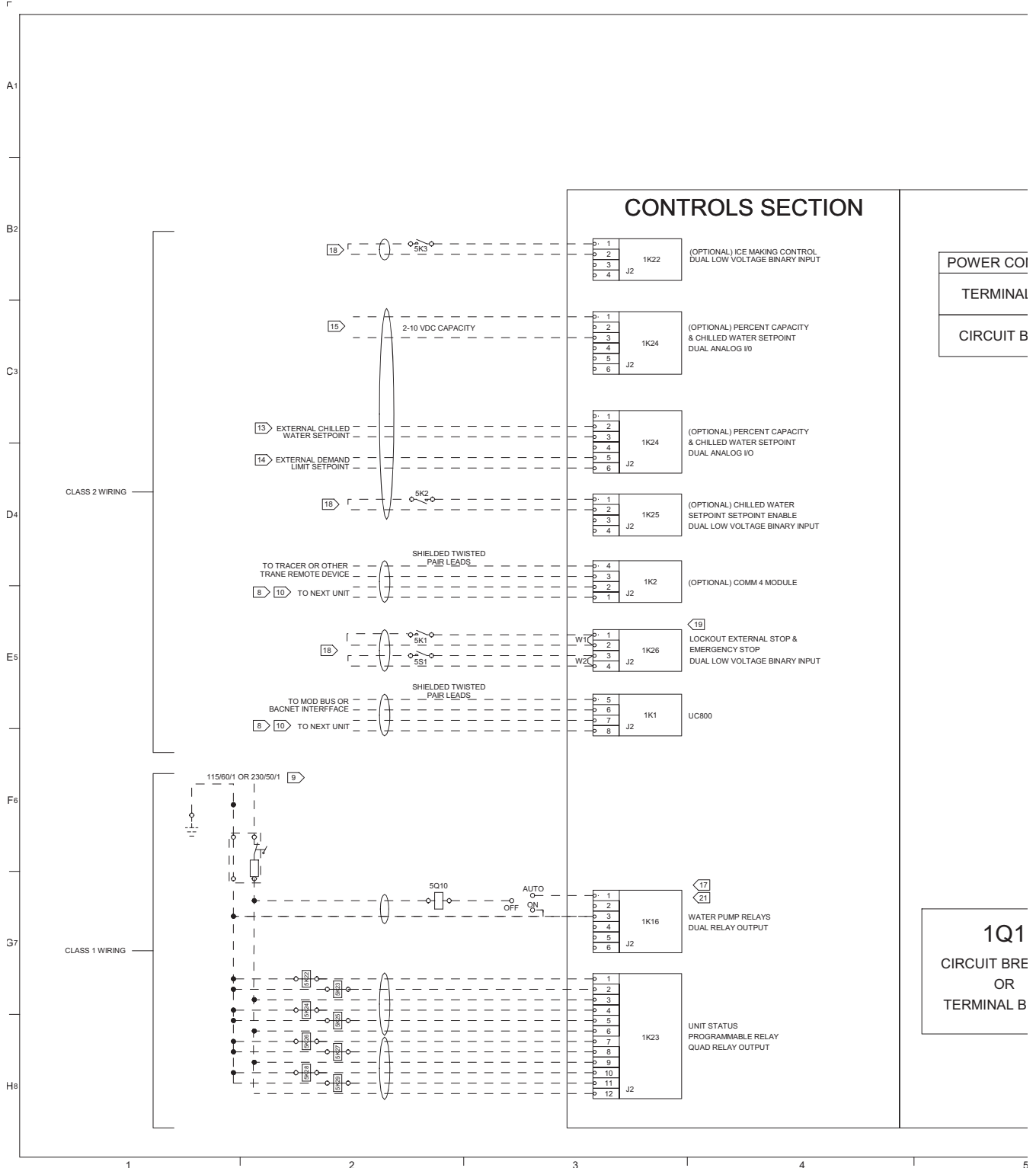
**Table 5. Customer wiring selection**

Unit Size (tons)	Rated Voltage	Single Point Power		Dual Point Power			
		Terminal Block	Circuit Breaker	Terminal Block		Circuit Breaker	
				Ckt 1	Ckt 2	Ckt 1	Ckt 2
115	380	500 kcmil - #4	2 x 500 kcmil - 2/0	-	-	-	-
	460	500 kcmil - #4	2 x 500 kcmil - 2/0	-	-	-	-
	400	500 kcmil - #4	2 x 500 kcmil - 2/0	-	-	-	-
130	380	500 kcmil - #4	2 x 500 kcmil - 2/0	-	-	-	-
	460	500 kcmil - #4	2 x 500 kcmil - 2/0	-	-	-	-
	400	500 kcmil - #4	2 x 500 kcmil - 2/0	-	-	-	-
150	380	2 x 500 kcmil - #4	2 x 500 kcmil - 2/0	-	-	-	-
	460	500 kcmil - #4	2 x 500 kcmil - 2/0	-	-	-	-
	400	500 kcmil - #4	2 x 500 kcmil - 2/0	-	-	-	-
170	380	2 x 500 kcmil - #4	2 x 500 kcmil - 2/0	-	-	-	-
	460	500 kcmil - #4	2 x 500 kcmil - 2/0	-	-	-	-
	400	2 x 500 kcmil - #4	2 x 500 kcmil - 2/0	-	-	-	-
180	380	2 x 500 kcmil - #4	2 x 500 kcmil - 2/0	-	-	-	-
	460	500 kcmil - #4	2 x 500 kcmil - 2/0	-	-	-	-
	400	2 x 500 kcmil - #4	2 x 500 kcmil - 2/0	-	-	-	-
200	380	2 x 500 kcmil - #4	3 x 500 kcmil - 3/0	-	-	-	-
	460	2 x 500 kcmil - #4	2 x 500 kcmil - 2/0	-	-	-	-
	400	2 x 500 kcmil - #4	2 x 500 kcmil - 2/0	-	-	-	-
215	380	2 x 500 kcmil - #4	3 x 500 kcmil - 3/0	-	-	-	-
	460	2 x 500 kcmil - #4	2 x 500 kcmil - 2/0	-	-	-	-
	400	2 x 500 kcmil - #4	3 x 500 kcmil - 3/0	-	-	-	-
230	380	4 x 600 kcmil - #2	-	-	-	-	-
	460	4 x 600 kcmil - #2	-	-	-	-	-
	400	4 x 600 kcmil - #2	-	-	-	-	-
250	380	4 x 600 kcmil - #2	-	-	-	-	-
	460	4 x 600 kcmil - #2	-	-	-	-	-
	400	4 x 600 kcmil - #2	-	-	-	-	-
280	380	4 x 600 kcmil - #2	-	2 x 500 kcmil - #4	500 kcmil - #4	3 x 500 kcmil - 3/0	2 x 500 kcmil - 2/0
	460	4 x 600 kcmil - #2	-	2 x 500 kcmil - #4	500 kcmil - #4	2 x 500 kcmil - 2/0	2 x 500 kcmil - 2/0
310	380	4 x 600 kcmil - #2	-	2 x 500 kcmil - #4	500 kcmil - #4	3 x 500 kcmil - 3/0	2 x 500 kcmil - 2/0
	460	4 x 600 kcmil - #2	-	2 x 500 kcmil - #4	500 kcmil - #4	2 x 500 kcmil - 2/0	2 x 500 kcmil - 2/0
350	380	4 x 600 kcmil - #2	-	2 x 500 kcmil - #4	500 kcmil - #4	4 x 500 kcmil - 3/0	2 x 500 kcmil - 2/0
	460	4 x 600 kcmil - #2	-	2 x 500 kcmil - #4	500 kcmil - #4	3 x 500 kcmil - 3/0	2 x 500 kcmil - 2/0
410	380	-	-	2 x 500 kcmil - #4	2 x 500 kcmil - #4	3 x 500 kcmil - 3/0	3 x 500 kcmil - 3/0
	460	4 x 600 kcmil - #2	-	2 x 500 kcmil - #4	2 x 500 kcmil - #4	2 x 500 kcmil - 2/0	2 x 500 kcmil - 2/0
450	380	-	-	2 x 500 kcmil - #4	2 x 500 kcmil - #4	4 x 500 kcmil - 3/0	4 x 500 kcmil - 3/0
	460	-	-	2 x 500 kcmil - #4	2 x 500 kcmil - #4	3 x 500 kcmil - 3/0	3 x 500 kcmil - 3/0
500	380	-	-	2 x 500 kcmil - #4	2 x 500 kcmil - #4	4 x 500 kcmil - 3/0	4 x 500 kcmil - 3/0
	460	-	-	2 x 500 kcmil - #4	2 x 500 kcmil - #4	3 x 500 kcmil - 3/0	3 x 500 kcmil - 3/0

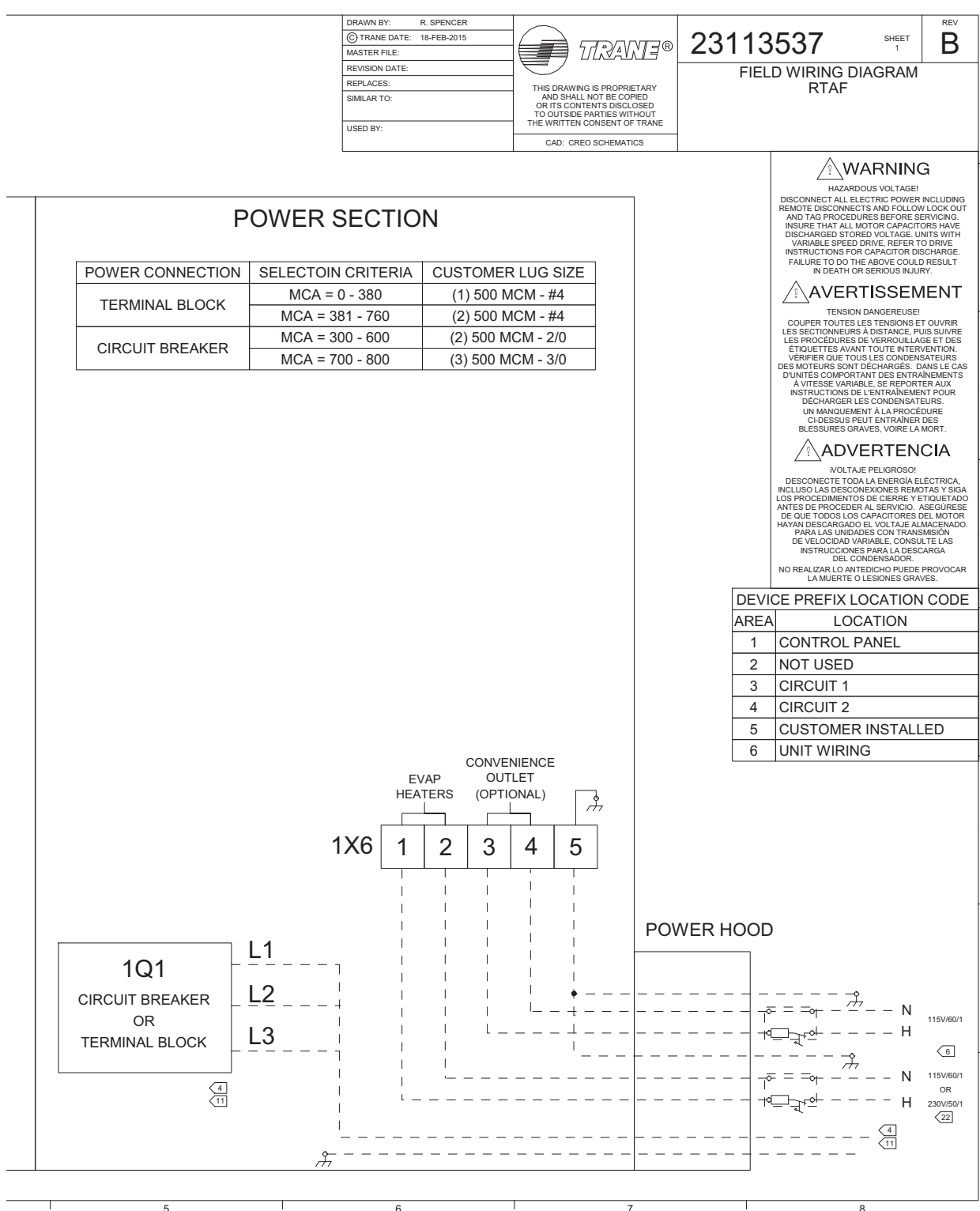
Page left intentionally blank

# Electrical Connections

Figure 10. Field wiring, 115 to 250 ton – sheet 1

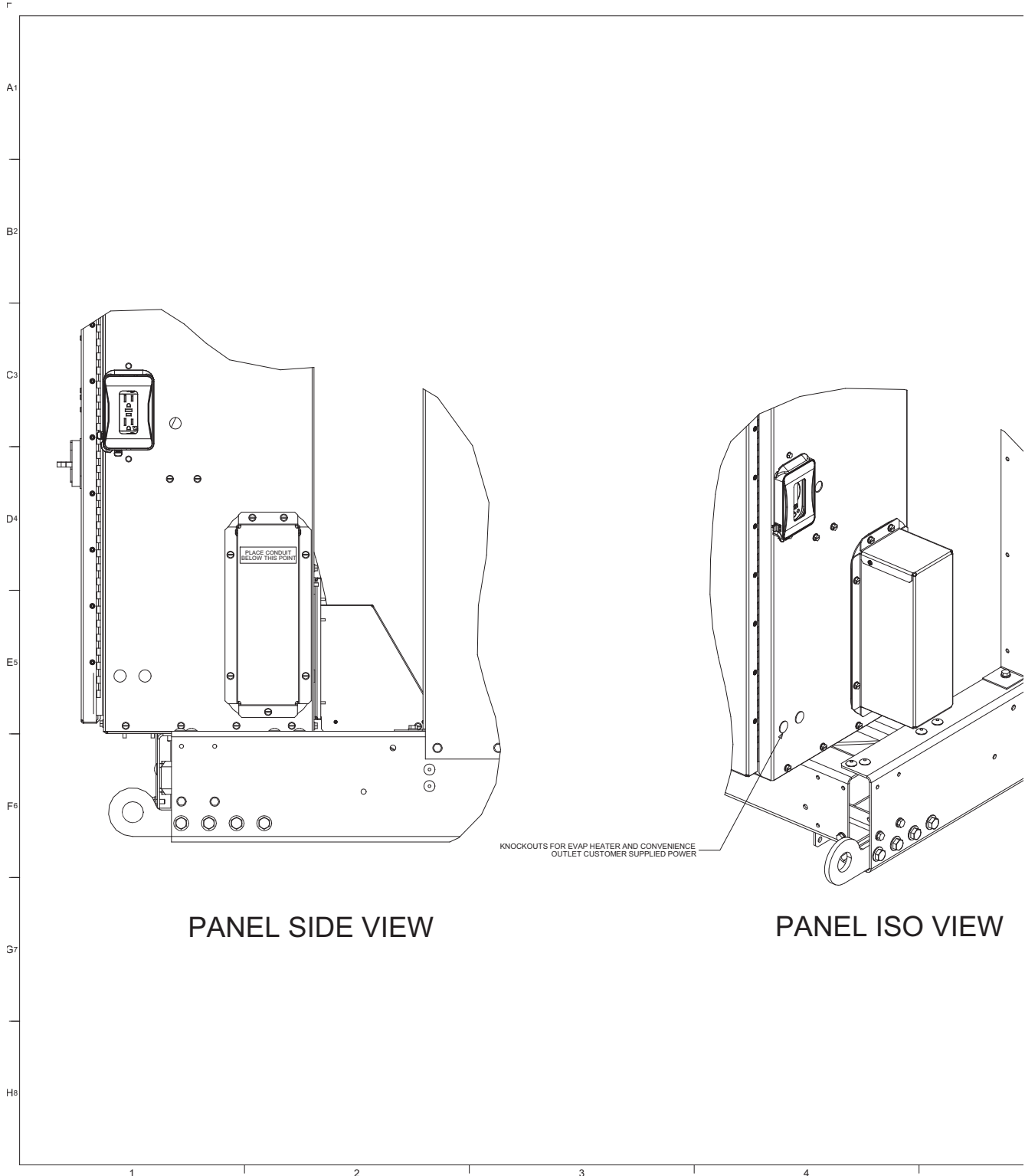


**Figure 11. Field wiring, 115 to 250 ton – sheet 1 (continued)**



## Electrical Connections

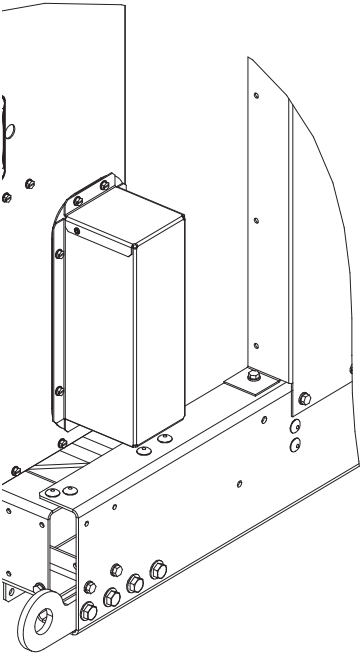
Figure 12. Field wiring, 115 to 250 ton — sheet 2



**Figure 13. Field wiring, 115 to 250 ton – sheet 2 (continued)**

DRAWN BY: R. SPENCER © TRANE DATE: 18-FEB-2015 MASTER FILE: REVISION DATE: REPLACES: SIMILAR TO: USED BY:		<h2 style="margin: 0;">23113537</h2>	SHEET 2	REV <b>B</b>
<b>FIELD WIRING DIAGRAM RTAF</b>				
<p><b>GENERAL NOTES</b></p> <ol style="list-style-type: none"> <li>1. CAUTION-DO NOT ENERGIZE THE UNIT UNTIL CHECK OUT AND STARTUP PROCEDURES HAVE BEEN COMPLETED.</li> <li>2. ALL MOTORS ARE PROTECTED FROM PRIMARY SINGLE PHASE FAILURES.</li> <li>3. CAUTION-TRANE PUMP CONTROL MUST BE USED TO PROVIDE PUMP CONTROL. EVAPORATOR CHILLED WATER PUMP MUST BE CONTROLLED BY THE CHILLER OUTPUT. FAILURE TO COMPLY WITH THIS REQUIREMENT MAY RESULT IN DAMAGE TO THE UNIT.</li> <li>4 SINGLE SOURCE POWER IS PROVIDED AS STANDARD ON THESE PRODUCTS, FIELD CONNECTIONS ARE MADE TO IQ1.</li> </ol> <p><b>WIRING REQUIREMENTS</b></p> <ol style="list-style-type: none"> <li>5. RECOMMENDED FIELD WIRING CONNECTIONS ARE SHOWN BY DOTTED LINES</li> <li>6 POWER FOR THE EVAPORATOR HEATER AND/OR OPTIONAL CONVENIENCE OUTLET IS SUPPLIED BY A CUSTOMER PROVIDED POWER SUPPLY. MAX FUSE SIZE IS 20 AMPS FOR EVAPORATOR HEATERS AND 20 AMPS FOR OPTIONAL CONVENIENCE OUTLET. WHEN POWERED, THE HEATERS WILL USE 2040VA.</li> <li>7. DO NOT RUN LOW VOLTAGE CONTROL WIRING (30 VOLTS OR LESS) IN CONDUIT WITH 110 VOLT OR HIGHER WIRING. DO NOT EXCEED THE FOLLOWING MAXIMUM RUN LENGTHS FOR A GIVEN SIZE: 14 AWG, 5000 FT; 16 AWG, 2000 FT; 18 AWG, 1000FT.</li> <li>8 SHIELDED TWISTED PAIR LEADS ARE REQUIRED FOR CONNECTIONS TO THE COMMUNICATIONS INTERFACE MODULE (1K1 AND 1K2). THE SHIELD SHOULD BE GROUNDED AT THE RTAF CONTROL PANEL END.</li> <li>9 CUSTOMER SUPPLIED POWER 115/60/1PH OR 230/50/1PH TO POWER RELAYS. MAX. FUSE SIZE IS 20 AMPS. GROUND ALL CUSTOMER SUPPLIED POWER SUPPLIES AS REQUIRED BY APPLICABLE CODES. GREEN GROUND SCREWS ARE PROVIDED IN UNIT CONTROL PANEL.</li> <li>10 WIRED TO NEXT UNIT. 22 AWG SHIELDED COMMUNICATION WIRE EQUIVALENT TO HELIX LF22P0014216 RECOMMENDED. THE SUM TOTAL OF ALL INTERCONNECTED CABLE SEGMENTS NOT TO EXCEED 4500 FEET. CONNECTION TOPOLOGY SHOULD BE DAISY CHAIN. REFER TO BUILDING AUTOMATION SYSTEM (BAS) COMMUNICATION INSTALLATION LITERATURE FOR END OF LINE TERMINATION RESISTOR REQUIREMENTS.</li> <li>11 ALL UNIT POWER WIRING MUST BE 600 VOLT COPPER CONDUCTORS ONLY AND HAVE A MINIMUM TEMPERATURE INSULATION RATING OF 90 DEGREE C. REFER TO UNIT NAMEPLATE FOR MINIMUM CIRCUIT AMPACITY AND MAXIMUM OVERCURRENT PROTECTION DEVICE. PROVIDE AN EQUIPMENT GROUND IN ACCORDANCE WITH APPLICABLE ELECTRIC CODES. REFER TO WIRERANGE TABLE FOR LUG SIZES.</li> <li>12. ALL FIELD WIRING MUST BE IN ACCORDANCE WITH NATIONAL ELECTRIC CODE AND LOCAL REQUIREMENTS.</li> </ol> <p><b>CONTACT RATINGS AND REQUIREMENTS</b></p> <ol style="list-style-type: none"> <li>13 WIRED TO CUSTOMER CHILLED WATER SET POINT 2-10 VDC FROM FACTORY. SEE OPERATING INSTRUCTIONS TO CONFIGURE FOR 4-20mA.</li> <li>14 WIRED TO CUSTOMER CURRENT LIMIT SET POINT 2-10 VDC FROM FACTORY. SEE OPERATING INSTRUCTIONS TO CONFIGURE FOR 4-20mA.</li> <li>15 WIRED TO CUSTOMER COMPRESSOR % RLA OUTPUT 2-10 VDC.</li> <li>16. ALL CUSTOMER CONTROL CIRCUIT WIRING MUST BE COPPER CONDUCTORS ONLY AND HAVE A MINIMUM INSULATION RATING OF 300 VOLTS. EXCEPT AS NOTED, ALL CUSTOMER WIRING CONNECTIONS ARE MADE TO CIRCUIT BOARD MOUNTED BOX LUGS WITH A WIRE RANGE OF 14 TO 18 AWG OR DIN RAIL MOUNTED SPRING FORCE TERMINALS.</li> <li>17 UNIT PROVIDED DRY CONTACTS FOR THE CONDENSER/CHILLED WATER PUMP CONTROL. RELAYS ARE RATED FOR 7.2 AMPS RESISTIVE, 2.88 AMPS PILOT DUTY, OR 1/3 HP, 7.2 FLA AT 120 VOLTS 60 HZ. CONTACTS ARE RATED FOR 5 AMPS GENERAL PURPOSE DUTY 240 VOLTS.</li> <li>18 CUSTOMER SUPPLIED CONTACTS FOR ALL LOW VOLTAGE CONNECTIONS MUST BE COMPATIBLE WITH DRY CIRCUIT 24 VOLTS DC FOR A 12 mA RESISTIVE LOAD. SILVER OR GOLD PLATED CONTACTS RECOMMENDED.</li> <li>19 THE CONTACTS FOR AUTO STOP AND EMERGENCY STOP SWITCHES ARE JUMPERED AT THE FACTORY BY JUMPERS 1W1 &amp; 1W2 TO ENABLE UNIT OPERATION. IF REMOTE CONTROL IS DESIRED, REMOVED THE JUMPERS AND CONNECT TO THE DESIRED CONTROL CIRCUIT.</li> <li>20. SOLID OVALS REPRESENT MAX NUMBER OF CONDUITS AND/OR CABLE GLANDS USED.</li> <li>21 FIELD WIRING REQUIRED ONLY WITH FIELD INSTALLED PUMP OPTION.</li> <li>22 400V, 50Hz UNITS WILL BE FACTORY WIRED TO UTILIZE 230V ACROSS THE EVAP HEATERS.</li> </ol>				



**GENERAL NOTES**

1. CAUTION-DO NOT ENERGIZE THE UNIT UNTIL CHECK OUT AND STARTUP PROCEDURES HAVE BEEN COMPLETED.
2. ALL MOTORS ARE PROTECTED FROM PRIMARY SINGLE PHASE FAILURES.
3. CAUTION-TRANE PUMP CONTROL MUST BE USED TO PROVIDE PUMP CONTROL. EVAPORATOR CHILLED WATER PUMP MUST BE CONTROLLED BY THE CHILLER OUTPUT. FAILURE TO COMPLY WITH THIS REQUIREMENT MAY RESULT IN DAMAGE TO THE UNIT.
- 4 SINGLE SOURCE POWER IS PROVIDED AS STANDARD ON THESE PRODUCTS, FIELD CONNECTIONS ARE MADE TO IQ1.

**WIRING REQUIREMENTS**

5. RECOMMENDED FIELD WIRING CONNECTIONS ARE SHOWN BY DOTTED LINES
- 6 POWER FOR THE EVAPORATOR HEATER AND/OR OPTIONAL CONVENIENCE OUTLET IS SUPPLIED BY A CUSTOMER PROVIDED POWER SUPPLY. MAX FUSE SIZE IS 20 AMPS FOR EVAPORATOR HEATERS AND 20 AMPS FOR OPTIONAL CONVENIENCE OUTLET. WHEN POWERED, THE HEATERS WILL USE 2040VA.
7. DO NOT RUN LOW VOLTAGE CONTROL WIRING (30 VOLTS OR LESS) IN CONDUIT WITH 110 VOLT OR HIGHER WIRING. DO NOT EXCEED THE FOLLOWING MAXIMUM RUN LENGTHS FOR A GIVEN SIZE: 14 AWG, 5000 FT; 16 AWG, 2000 FT; 18 AWG, 1000FT.
- 8 SHIELDED TWISTED PAIR LEADS ARE REQUIRED FOR CONNECTIONS TO THE COMMUNICATIONS INTERFACE MODULE (1K1 AND 1K2). THE SHIELD SHOULD BE GROUNDED AT THE RTAF CONTROL PANEL END.
- 9 CUSTOMER SUPPLIED POWER 115/60/1PH OR 230/50/1PH TO POWER RELAYS. MAX. FUSE SIZE IS 20 AMPS. GROUND ALL CUSTOMER SUPPLIED POWER SUPPLIES AS REQUIRED BY APPLICABLE CODES. GREEN GROUND SCREWS ARE PROVIDED IN UNIT CONTROL PANEL.
- 10 WIRED TO NEXT UNIT. 22 AWG SHIELDED COMMUNICATION WIRE EQUIVALENT TO HELIX LF22P0014216 RECOMMENDED. THE SUM TOTAL OF ALL INTERCONNECTED CABLE SEGMENTS NOT TO EXCEED 4500 FEET. CONNECTION TOPOLOGY SHOULD BE DAISY CHAIN. REFER TO BUILDING AUTOMATION SYSTEM (BAS) COMMUNICATION INSTALLATION LITERATURE FOR END OF LINE TERMINATION RESISTOR REQUIREMENTS.
- 11 ALL UNIT POWER WIRING MUST BE 600 VOLT COPPER CONDUCTORS ONLY AND HAVE A MINIMUM TEMPERATURE INSULATION RATING OF 90 DEGREE C. REFER TO UNIT NAMEPLATE FOR MINIMUM CIRCUIT AMPACITY AND MAXIMUM OVERCURRENT PROTECTION DEVICE. PROVIDE AN EQUIPMENT GROUND IN ACCORDANCE WITH APPLICABLE ELECTRIC CODES. REFER TO WIRERANGE TABLE FOR LUG SIZES.
12. ALL FIELD WIRING MUST BE IN ACCORDANCE WITH NATIONAL ELECTRIC CODE AND LOCAL REQUIREMENTS.

**CONTACT RATINGS AND REQUIREMENTS**

- 13 WIRED TO CUSTOMER CHILLED WATER SET POINT 2-10 VDC FROM FACTORY. SEE OPERATING INSTRUCTIONS TO CONFIGURE FOR 4-20mA.
- 14 WIRED TO CUSTOMER CURRENT LIMIT SET POINT 2-10 VDC FROM FACTORY. SEE OPERATING INSTRUCTIONS TO CONFIGURE FOR 4-20mA.
- 15 WIRED TO CUSTOMER COMPRESSOR % RLA OUTPUT 2-10 VDC.
16. ALL CUSTOMER CONTROL CIRCUIT WIRING MUST BE COPPER CONDUCTORS ONLY AND HAVE A MINIMUM INSULATION RATING OF 300 VOLTS. EXCEPT AS NOTED, ALL CUSTOMER WIRING CONNECTIONS ARE MADE TO CIRCUIT BOARD MOUNTED BOX LUGS WITH A WIRE RANGE OF 14 TO 18 AWG OR DIN RAIL MOUNTED SPRING FORCE TERMINALS.
- 17 UNIT PROVIDED DRY CONTACTS FOR THE CONDENSER/CHILLED WATER PUMP CONTROL. RELAYS ARE RATED FOR 7.2 AMPS RESISTIVE, 2.88 AMPS PILOT DUTY, OR 1/3 HP, 7.2 FLA AT 120 VOLTS 60 HZ. CONTACTS ARE RATED FOR 5 AMPS GENERAL PURPOSE DUTY 240 VOLTS.
- 18 CUSTOMER SUPPLIED CONTACTS FOR ALL LOW VOLTAGE CONNECTIONS MUST BE COMPATIBLE WITH DRY CIRCUIT 24 VOLTS DC FOR A 12 mA RESISTIVE LOAD. SILVER OR GOLD PLATED CONTACTS RECOMMENDED.
- 19 THE CONTACTS FOR AUTO STOP AND EMERGENCY STOP SWITCHES ARE JUMPERED AT THE FACTORY BY JUMPERS 1W1 & 1W2 TO ENABLE UNIT OPERATION. IF REMOTE CONTROL IS DESIRED, REMOVED THE JUMPERS AND CONNECT TO THE DESIRED CONTROL CIRCUIT.
20. SOLID OVALS REPRESENT MAX NUMBER OF CONDUITS AND/OR CABLE GLANDS USED.
- 21 FIELD WIRING REQUIRED ONLY WITH FIELD INSTALLED PUMP OPTION.
- 22 400V, 50Hz UNITS WILL BE FACTORY WIRED TO UTILIZE 230V ACROSS THE EVAP HEATERS.

**NEL ISO VIEW**

RLC-PRC049B-EN

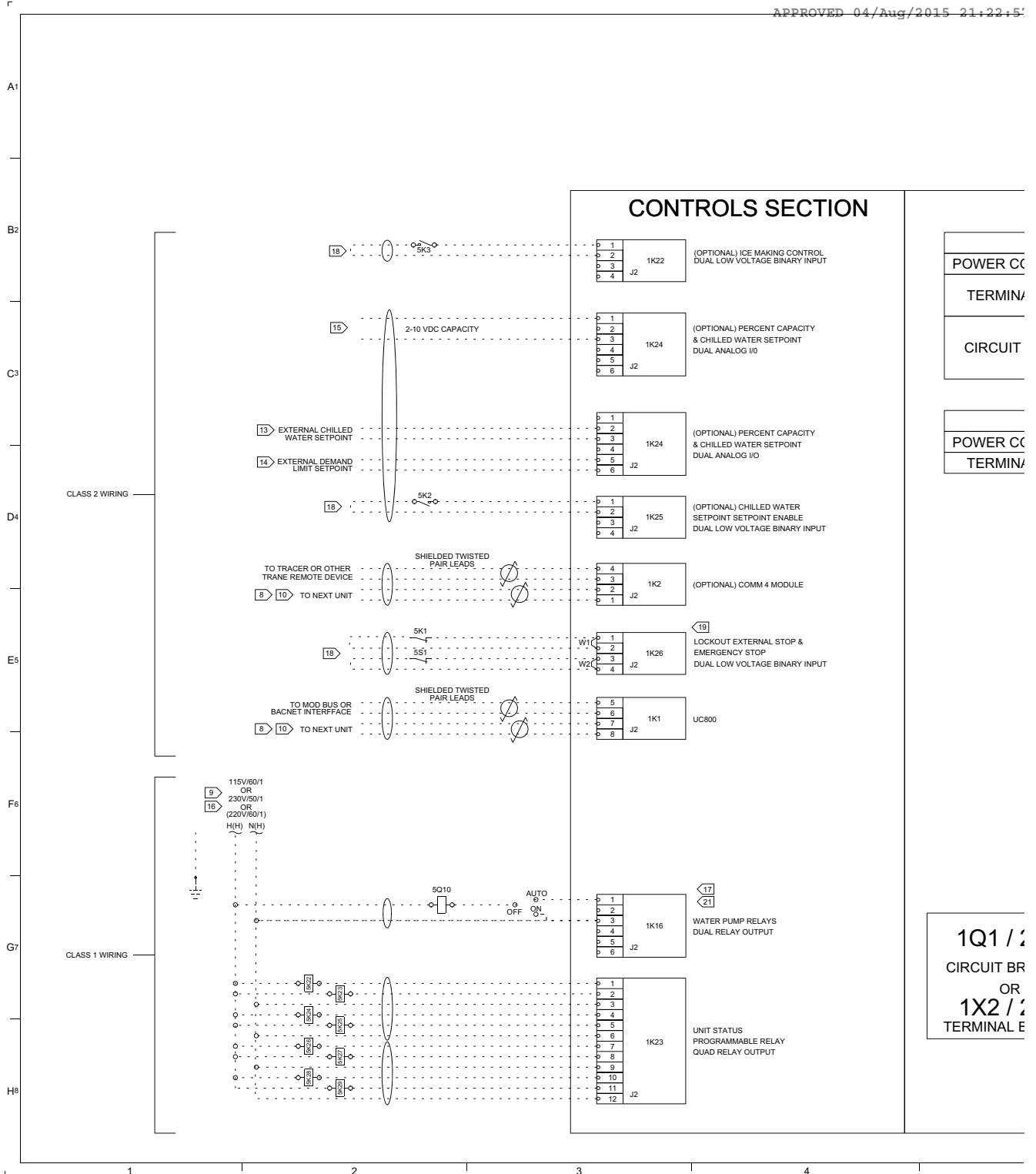
31



# Electrical Connections

Figure 14. Field wiring, 280 to 500 ton — sheet 1

APPROVED 04/Aug/2015 21:22:51





**Figure 15. Field wiring, 280 to 500 ton – sheet 1 (continued)**

ROVED\_04/Aug/2015 21:22:57 GMT

DRAWN BY: N. SCHAMS © TRANE DATE: 14-JULY-2015 MASTER FILE: REVISION DATE: REPLACES: SIMILAR TO: USED BY:	<p>THIS DRAWING IS PROPRIETARY AND SHALL NOT BE COPIED OR ITS CONTENTS DISCLOSED TO OUTSIDE PARTIES WITHOUT THE WRITTEN CONSENT OF TRANE</p> <p>CAD: CREO SCHEMATICS</p>	<b>57227906</b> SHEET 1 <b>A</b>
<b>FIELD WIRING DIAGRAM</b> <b>RTAF</b>		

## SECTION

### POWER SECTION

#### 280T-500T DUAL POINT POWER

POWER CONNECTION	SELECTION CRITERIA	CUSTOMER LUG SIZE
TERMINAL BLOCK	MCA = 0 - 380	(1) 500 MCM - #4
	MCA = 381 - 760	(2) 500 MCM - #4
CIRCUIT BREAKER	MOP = 300 - 600	(2) 500 MCM - 2/0
	MOP = 700 - 800	(3) 500 MCM - 3/0
	MOP = 900 - 1200	(4) 500 MCM - 3/0

#### 280T-500T SINGLE POINT POWER

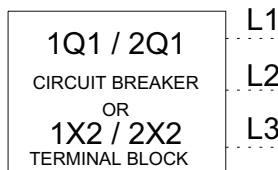
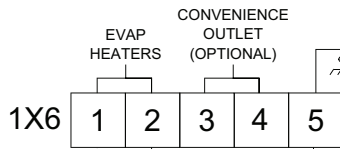
POWER CONNECTION	SELECTION CRITERIA	CUSTOMER LUG SIZE
TERMINAL BLOCK	ALL	(4) 600 MCM - #2

**WARNING**  
 HAZARDOUS VOLTAGE!  
 DISCONNECT ALL ELECTRIC POWER INCLUDING REMOTE DISCONNECTS AND FOLLOW LOCK OUT AND TAG PROCEDURES BEFORE SERVICING. INSURE THAT ALL MOTOR CAPACITORS HAVE DISCHARGED STORED VOLTAGE. UNITS WITH VARIABLE SPEED DRIVE, REFER TO DRIVE INSTRUCTIONS FOR CAPACITOR DISCHARGE. FAILURE TO DO THE ABOVE COULD RESULT IN DEATH OR SERIOUS INJURY.

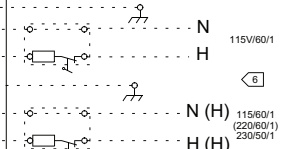
**AVERTISSEMENT**  
 TENSION DANGEREUSE!  
 COUPER TOUTES LES TENSIONS ET OUVRIRE LES SECTIONNEURS À DISTANCE. PUIS SUIVRE LES PROCÉDURES DE VERROUILLAGE ET DES ÉTIQUETTES AVANT TOUTE INTERVENTION. VÉRIFIER QUE TOUTS LES CONDENSATEURS DES MOTEURS SONT DÉCHARGÉS. DANS LE CAS D'UNITÉS COMPORTANT DES ENTRAÎNEMENTS À VITESSE VARIABLE, SE REPORTER AUX INSTRUCTIONS DE L'ENTRAÎNEMENT POUR DÉCHARGER LES CONDENSATEURS. UN MANŒVREMENT À LA PROCÉDURE CI-DESSUS PEUT ENTRAÎNER DES BLESSURES GRAVES, VOIRE LA MORT.

**ADVERTENCIA**  
 ¡VOLTAJE PELIGROSO!  
 DESCONECTE TODA LA ENERGÍA ELÉCTRICA, INCLUIDO LAS DESCONEXIONES REMOTAS Y SIGA LOS PROCEDIMIENTOS DE CIERRE Y ETIQUETADO ANTES DE PROCEDER AL SERVICIO. ASEGURESE DE QUE TODOS LOS CAPACITORES DEL MOTOR HAYAN DESCARGADO EL VOLTAJE ALMACENADO. PARA LAS UNIDADES CON TRANSMISIÓN DE VELOCIDAD VARIABLE, CONSULTE LAS INSTRUCCIONES PARA LA DESCARGA DEL CONDENSADOR. NO REALIZAR LO ANTERIOR PUEDE PROVOCAR LA MUERTE O LESIONES GRAVES.

AREA	LOCATION
1	CONTROL PANEL #1
2	CONTROL PANEL #2
3	CIRCUIT 1
4	CIRCUIT 2
5	CUSTOMER INSTALLED
6	UNIT WIRING



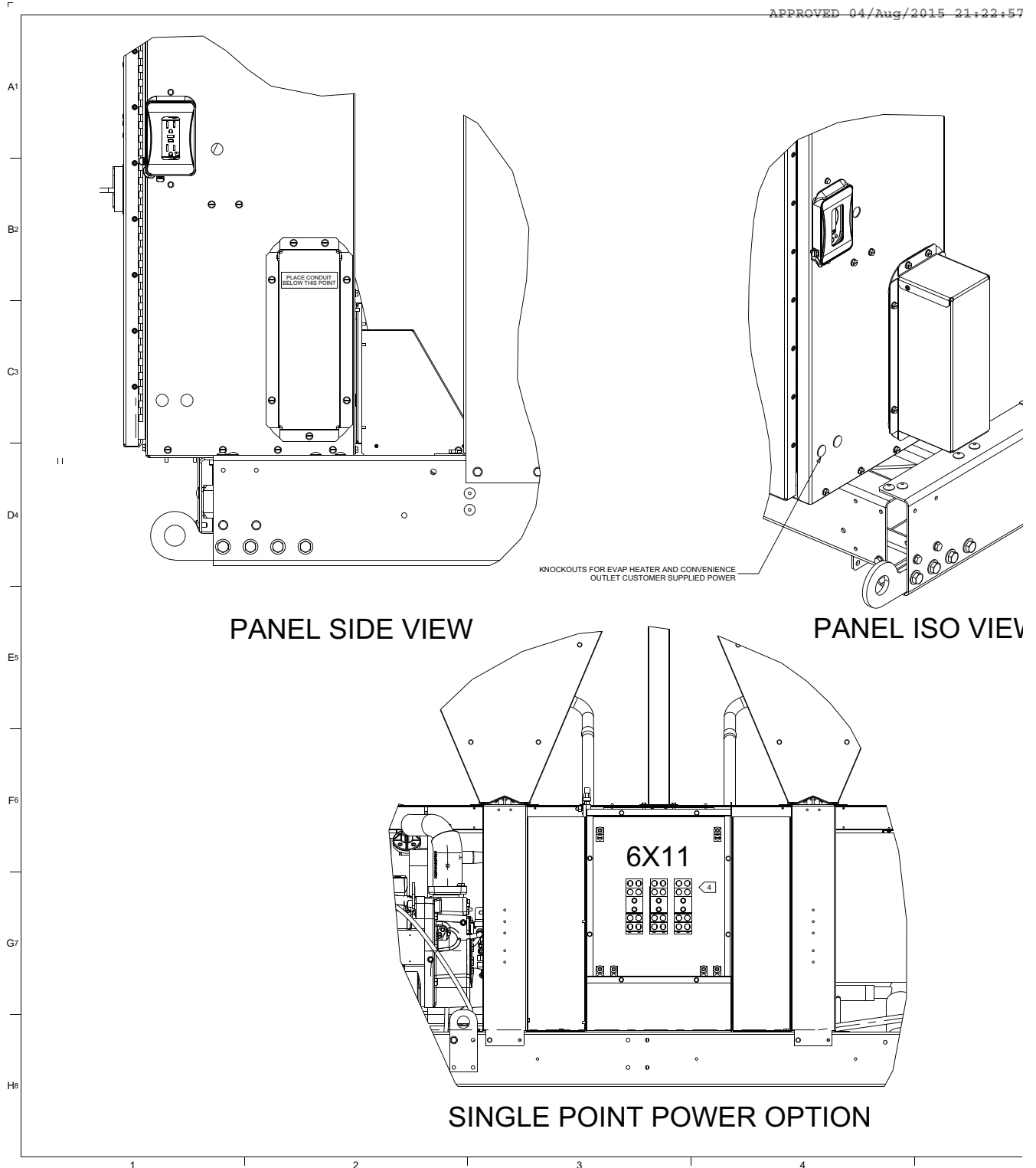
### POWER HOOD



EQUIPMENT GROUND

# Electrical Connections

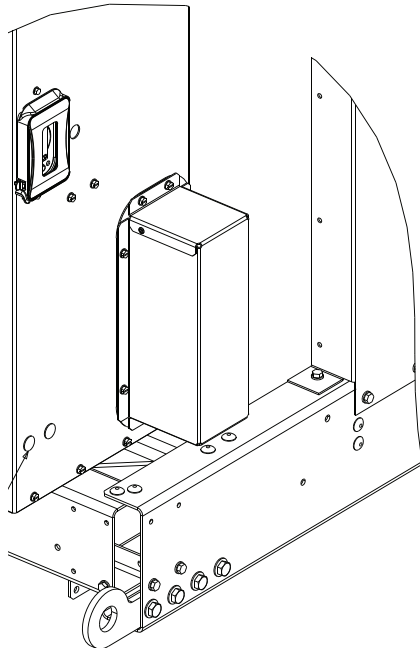
Figure 16. Field wiring, 280 to 500 ton — sheet 2



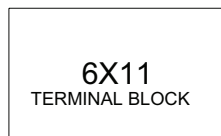
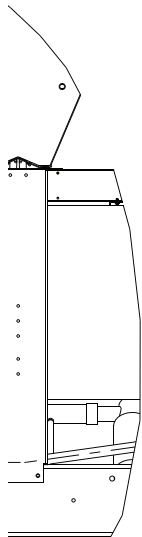
**Figure 17. Field wiring, 280 to 500 ton – sheet 2 (continued)**

0VED\_04/Aug/2015 21:22:57 GMT

DRAWN BY: N. SCHAMS	<p>THIS DRAWING IS PROPRIETARY AND SHALL NOT BE COPIED OR ITS CONTENTS DISCLOSED TO OUTSIDE PARTIES WITHOUT THE WRITTEN CONSENT OF TRANE</p> <p>CAD: CREO SCHEMATICS</p>	<p><b>57227906</b></p> <p>FIELD WIRING DIAGRAM RTAF</p>	REV <b>A</b>
© TRANE DATE: 14-JULY-2015			SHEET 2
MASTER FILE:			
REVISION DATE:			
REPLACES:			
SIMILAR TO:			
USED BY:			



**PANEL ISO VIEW**



**GENERAL NOTES**

1. CAUTION-DO NOT ENERGIZE THE UNIT UNTIL CHECK OUT AND STARTUP PROCEDURES HAVE BEEN COMPLETED.
2. ALL MOTORS ARE PROTECTED FROM PRIMARY SINGLE PHASE FAILURES.
3. CAUTION-TRANE PUMP CONTROL MUST BE USED TO PROVIDE PUMP CONTROL. EVAPORATOR CHILLED WATER PUMP MUST BE CONTROLLED BY THE CHILLER OUTPUT. FAILURE TO COMPLY WITH THIS REQUIREMENT MAY RESULT IN DAMAGE TO THE UNIT.
4. FOR DUAL POINT POWER OPTION ON 280T-500T UNITS FIELD CONNECTIONS ARE MADE TO 1Q1/1X2 ON PANEL 1 AND 2Q1/2X2 IN PANEL 2. FOR SINGLE POINT POWER OPTION ON 280T-500T UNITS FIELD CONNECTIONS ARE MADE TO 6X11 IN SINGLE POINT POWER BOX.

**WIRING REQUIREMENTS**

5. RECOMMENDED FIELD WIRING CONNECTIONS ARE SHOWN BY DOTTED LINES
6. POWER FOR THE EVAPORATOR HEATER AND/OR OPTIONAL CONVENIENCE OUTLET IS SUPPLIED BY A CUSTOMER PROVIDED POWER SUPPLY. MAX FUSE SIZE IS 20 AMPS FOR EVAPORATOR HEATERS AND 15 AMPS FOR OPTIONAL CONVENIENCE OUTLET. SEE NAMEPLATE FOR HEATER VA VALUES.
7. DO NOT RUN LOW VOLTAGE CONTROL WIRING (30 VOLTS OR LESS) IN CONDUIT WITH 110 VOLT OR HIGHER WIRING. DO NOT EXCEED THE FOLLOWING MAXIMUM RUN LENGTHS FOR A GIVEN SIZE: 14 AWG, 5000 FT; 16 AWG, 2000 FT; 18 AWG, 1000FT.
8. SHIELDED TWISTED PAIR LEADS ARE REQUIRED FOR CONNECTIONS TO THE COMMUNICATIONS INTERFACE MODULE (1K1 AND 1K2). THE SHIELD SHOULD BE GROUNDED AT THE RTAF CONTROL PANEL END.
9. CUSTOMER SUPPLIED POWER 115/60/1PH, 220/60/1PH, OR 230/50/1PH TO POWER RELAYS. MAX. FUSE SIZE IS 20 AMPS. GROUND ALL CUSTOMER SUPPLIED POWER SUPPLIES AS REQUIRED BY APPLICABLE CODES. GREEN GROUND SCREWS ARE PROVIDED IN UNIT CONTROL PANEL.
10. WIRE TO NEXT UNIT. 22 AWG SHIELDED COMMUNICATION WIRE EQUIVALENT TO HELIX LF22P0014216 RECOMMENDED. THE SUM TOTAL OF ALL INTERCONNECTED CABLE SEGMENTS NOT TO EXCEED 4500 FEET. CONNECTION TOPOLOGY SHOULD BE DAISY CHAIN. REFER TO BUILDING AUTOMATION SYSTEM (BAS) COMMUNICATION INSTALLATION LITERATURE FOR END OF LINE TERMINATION RESISTOR REQUIREMENTS.
11. ALL UNIT POWER WIRING MUST BE 600 VOLT COPPER CONDUCTORS ONLY AND HAVE A MINIMUM TEMPERATURE INSULATION RATING OF 90 DEGREE C. REFER TO UNIT NAMEPLATE FOR MINIMUM CIRCUIT AMPACITY AND MAXIMUM OVERCURRENT PROTECTION DEVICE. PROVIDE AN EQUIPMENT GROUND IN ACCORDANCE WITH APPLICABLE ELECTRIC CODES. REFER TO WIRERANGE TABLE FOR LUG SIZES.
12. ALL FIELD WIRING MUST BE IN ACCORDANCE WITH NATIONAL ELECTRIC CODE AND LOCAL REQUIREMENTS.

**CONTACT RATINGS AND REQUIREMENTS**

13. WIRE TO CUSTOMER CHILLED WATER SET POINT 2-10 VDC FROM FACTORY. SEE OPERATING INSTRUCTIONS TO CONFIGURE FOR 4-20mA.
14. WIRE TO CUSTOMER CURRENT LIMIT SET POINT 2-10 VDC FROM FACTORY. SEE OPERATING INSTRUCTIONS TO CONFIGURE FOR 4-20mA.
15. WIRE TO CUSTOMER COMPRESSOR % RLA OUTPUT 2-10 VDC.
16. ALL CUSTOMER CONTROL CIRCUIT WIRING MUST BE COPPER CONDUCTORS ONLY AND HAVE A MINIMUM INSULATION RATING OF 300 VOLTS. EXCEPT AS NOTED, ALL CUSTOMER WIRING CONNECTIONS ARE MADE TO CIRCUIT BOARD MOUNTED BOX LUGS WITH A WIRE RANGE OF 14 TO 18 AWG OR DIN RAIL MOUNTED SPRING FORCE TERMINALS.
17. UNIT PROVIDED DRY CONTACTS FOR THE CONDENSER/CHILLED WATER PUMP CONTROL. RELAYS ARE RATED FOR 7.2 AMPS RESISTIVE, 2.88 AMPS PILOT DUTY, OR 1/3 HP, 7.2 FLA AT 120 VOLTS 60 HZ. CONTACTS ARE RATED FOR 5 AMPS GENERAL PURPOSE DUTY 240 VOLTS.
18. CUSTOMER SUPPLIED CONTACTS FOR ALL LOW VOLTAGE CONNECTIONS MUST BE COMPATIBLE WITH DRY CIRCUIT 24 VOLTS DC FOR A 12 mA RESISTIVE LOAD. SILVER OR GOLD PLATED CONTACTS RECOMMENDED.
19. THE CONTACTS FOR AUTO STOP AND EMERGENCY STOP SWITCHES ARE JUMPERED AT THE FACTORY BY JUMPERS 1W1 & 1W2 TO ENABLE UNIT OPERATION. IF REMOTE CONTROL IS DESIRED, REMOVED THE JUMPERS AND CONNECT TO THE DESIRED CONTROL CIRCUIT.
20. SOLID OVALS REPRESENT MAX NUMBER OF CONDUITS AND/OR CABLE GLANDS USED.
21. FIELD WIRING REQUIRED ONLY WITH FIELD INSTALLED PUMP OPTION.
22. 400V, 50Hz UNITS WILL BE FACTORY WIRED TO UTILIZE 230V ACROSS THE EVAP HEATERS.
23. FIELD WIRING TO 1Q1/2Q1/1X1/2X1 ONLY NEEDED ON DUAL POINT POWER UNITS.

**TION**

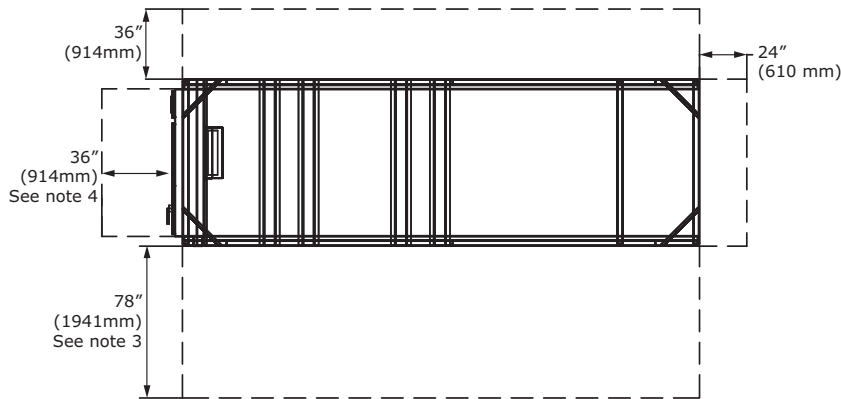
# Dimensions

## Service Clearance

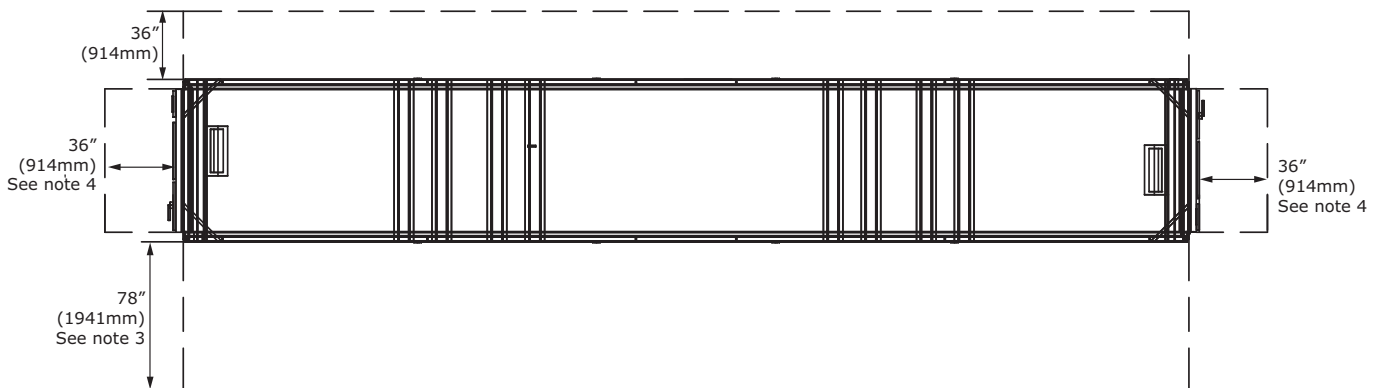
Figure 18. RTAF service clearances

NO OBSTRUCTIONS ABOVE UNIT

Unit sizes 115 to 250 tons:



Unit sizes 280 to 500 tons:

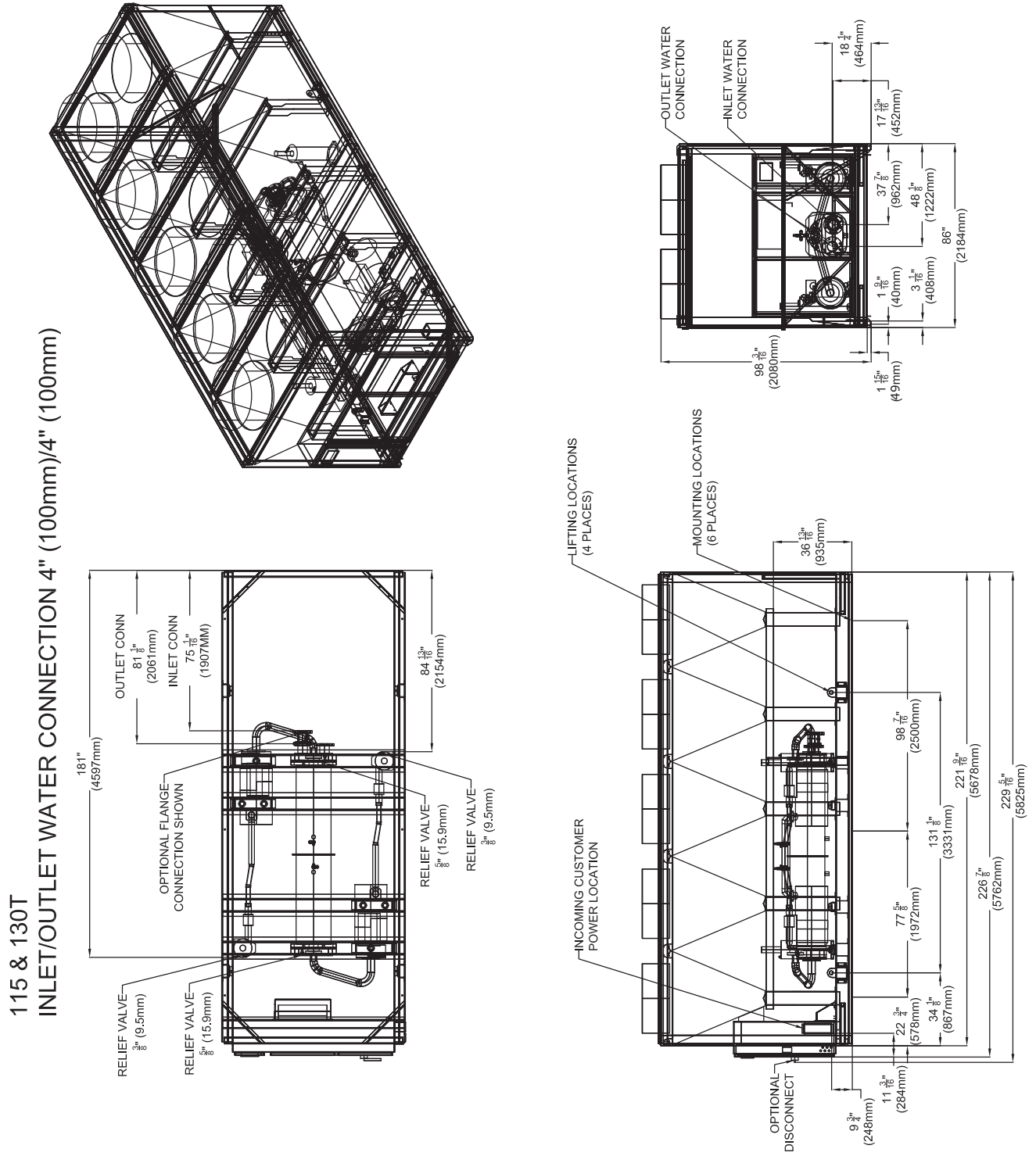


**Notes:**

1. Area above unit required for operation, maintenance, panel access and airflow.  
NO OBSTRUCTIONS ABOVE UNIT
2. For installations with obstructions or multiple units, see Close Spacing and Restricted Airflow Bulletin RLC-PRB037\*-EN.
3. Clearance of 78" (1981 mm) on the side of the unit is required for coil replacement. Preferred side for coil replacement is shown (right side of unit, as facing circuit 1 control panel). However, either side is acceptable.
4. A full 36" (914 mm) clearance is required in front of the control panels. Must be measured from front of panel, not end of unit base.
5. Clearances shown are sufficient for tube pull.

# Unit Dimensions

Figure 19. RTAF unit dimensions - 115, 130 ton



# Dimensions

Figure 20. RTAF unit dimensions - 150, 170, 180 ton

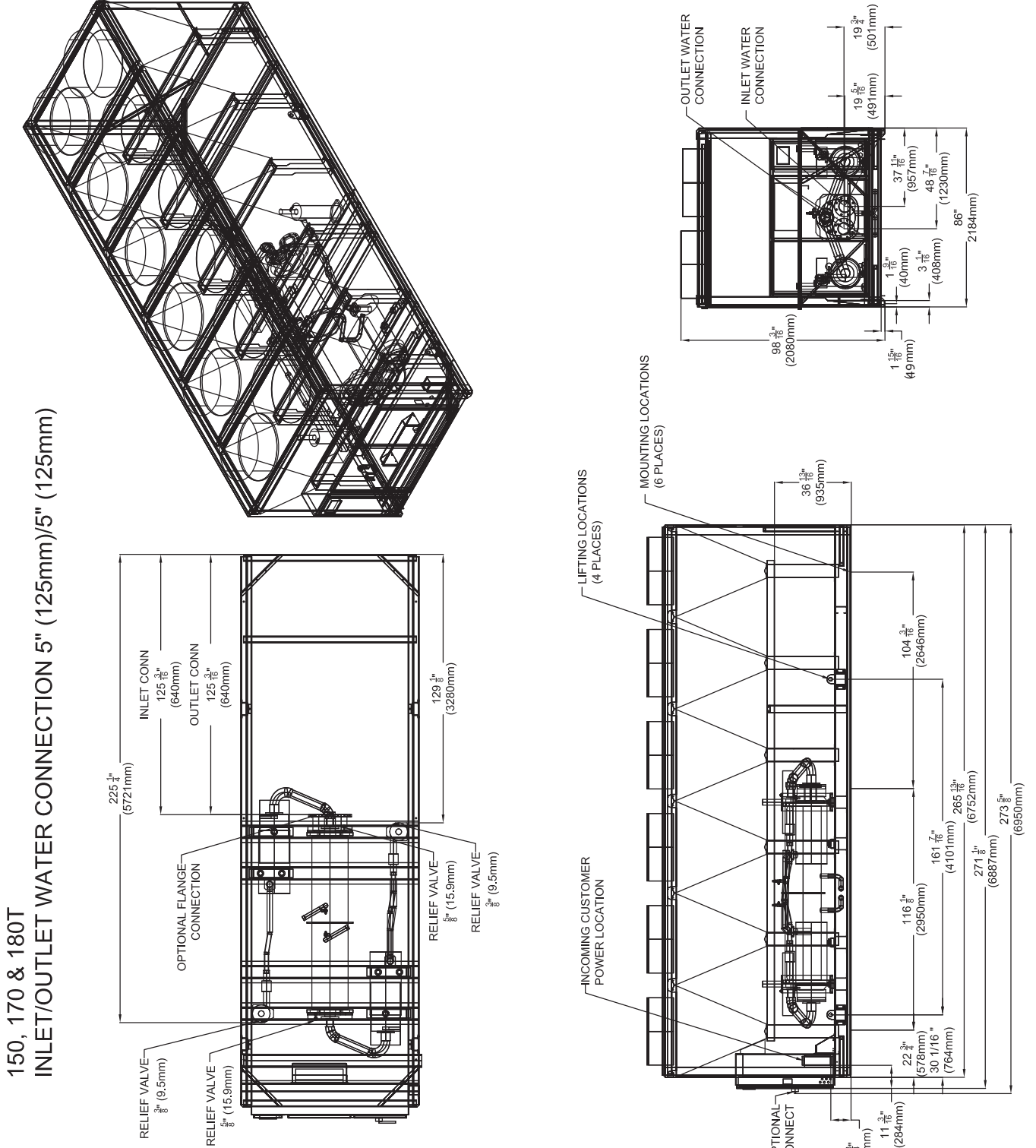
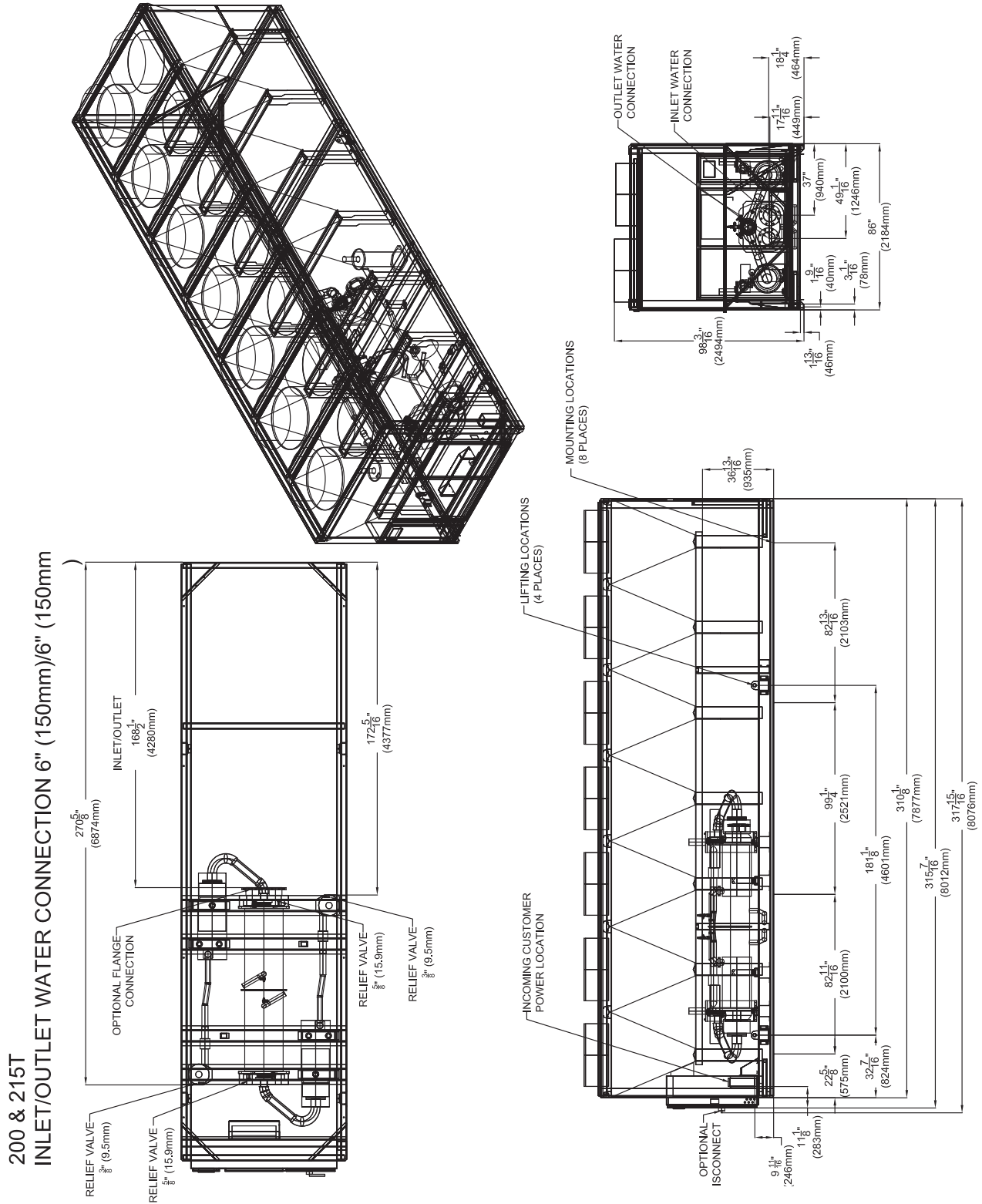


Figure 21. RTAF unit dimensions - 200, 215 ton



# Dimensions

Figure 22. RTAF unit dimensions - 230, 250 ton

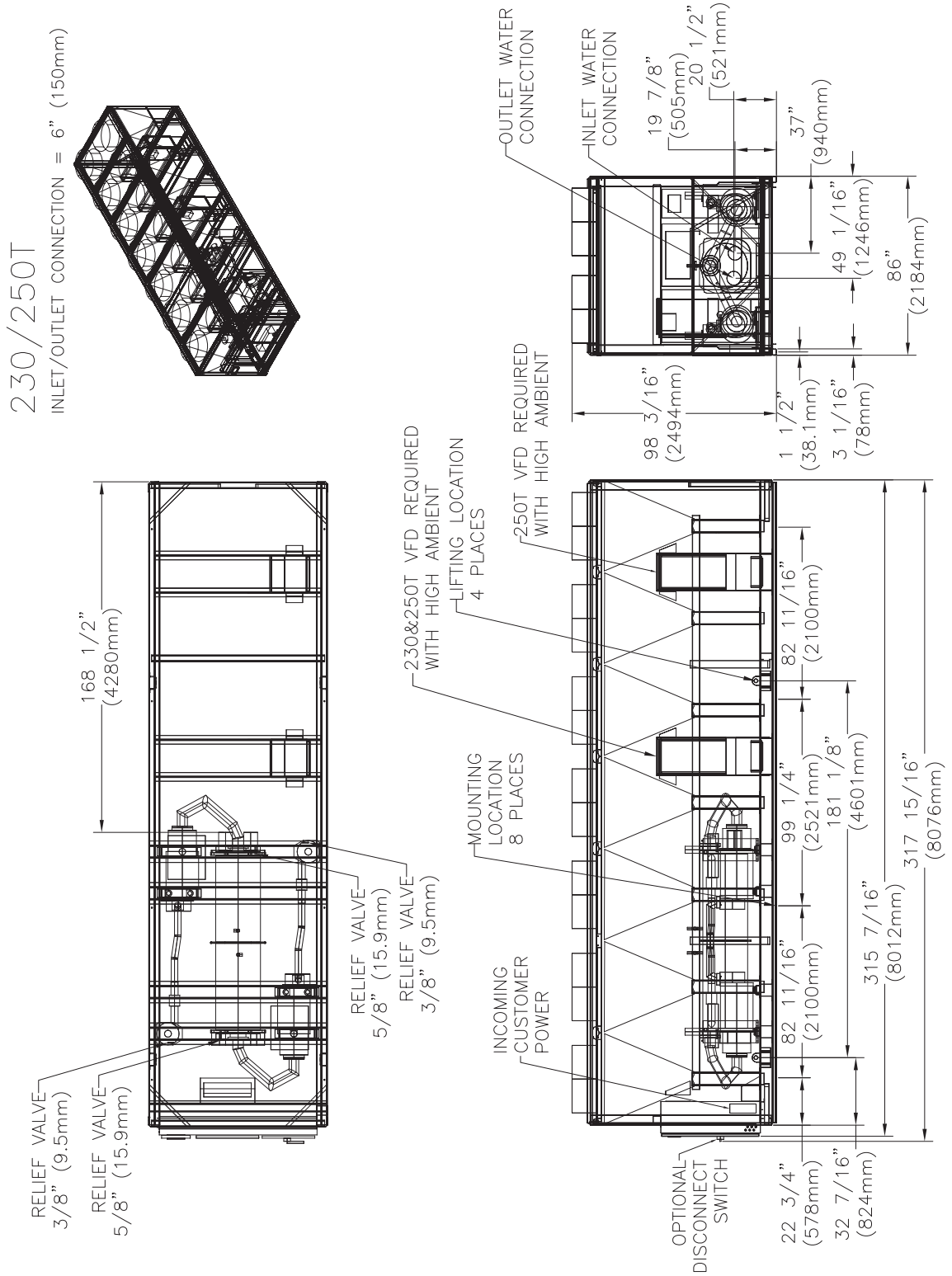
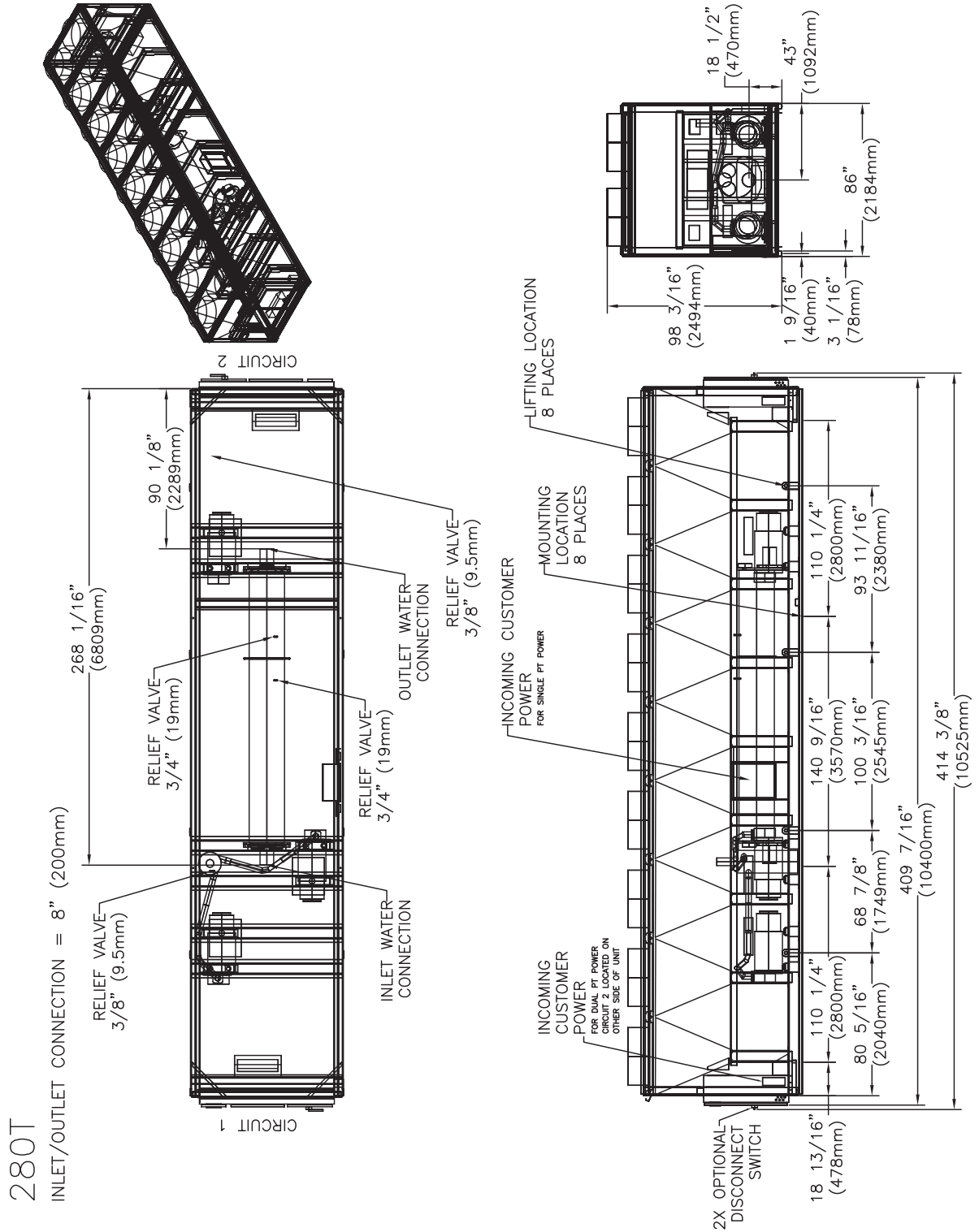




Figure 23. RTAF unit dimensions - 280 ton



# Dimensions

Figure 24. RTAF unit dimensions - 310, 350 ton

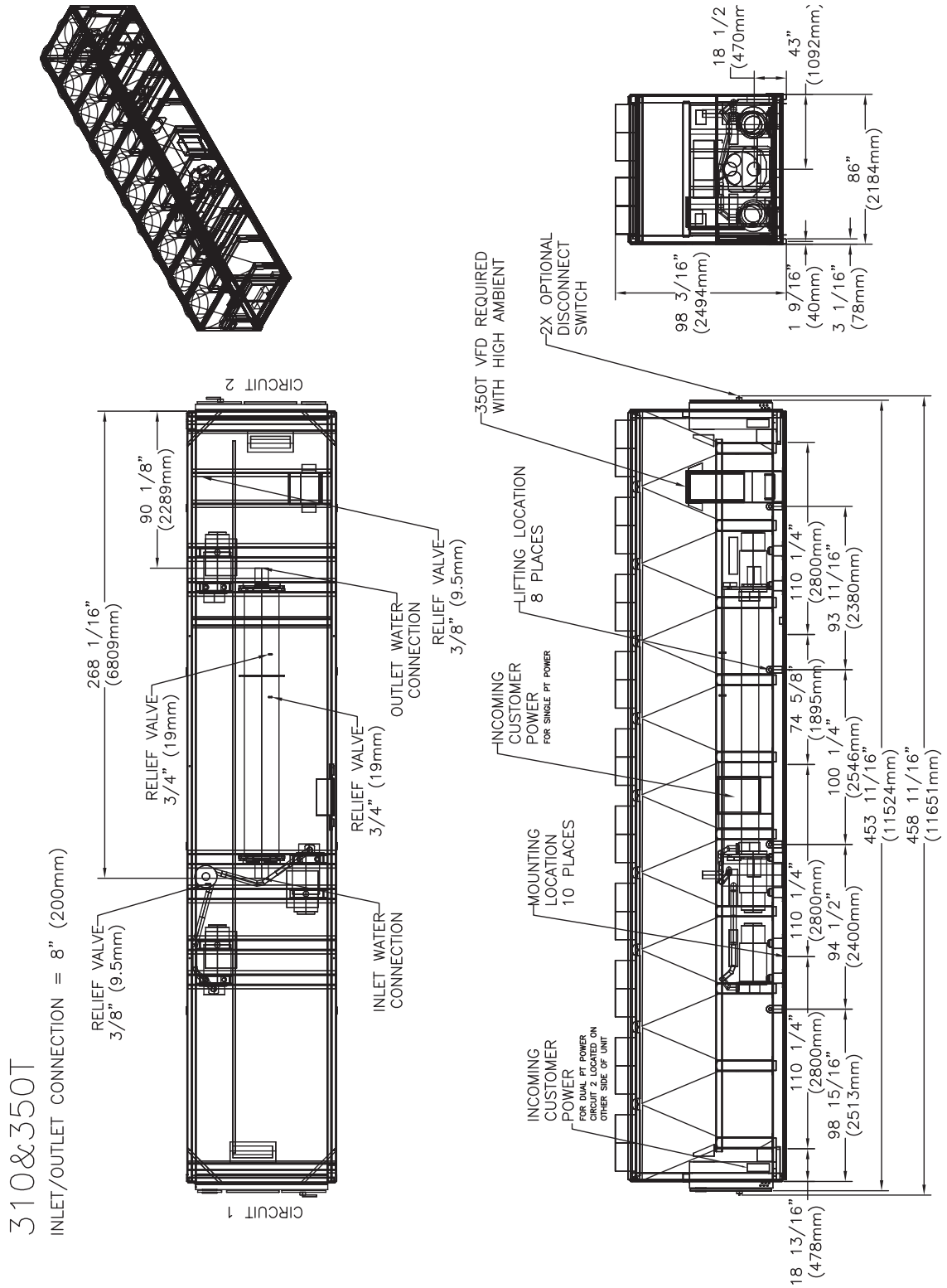
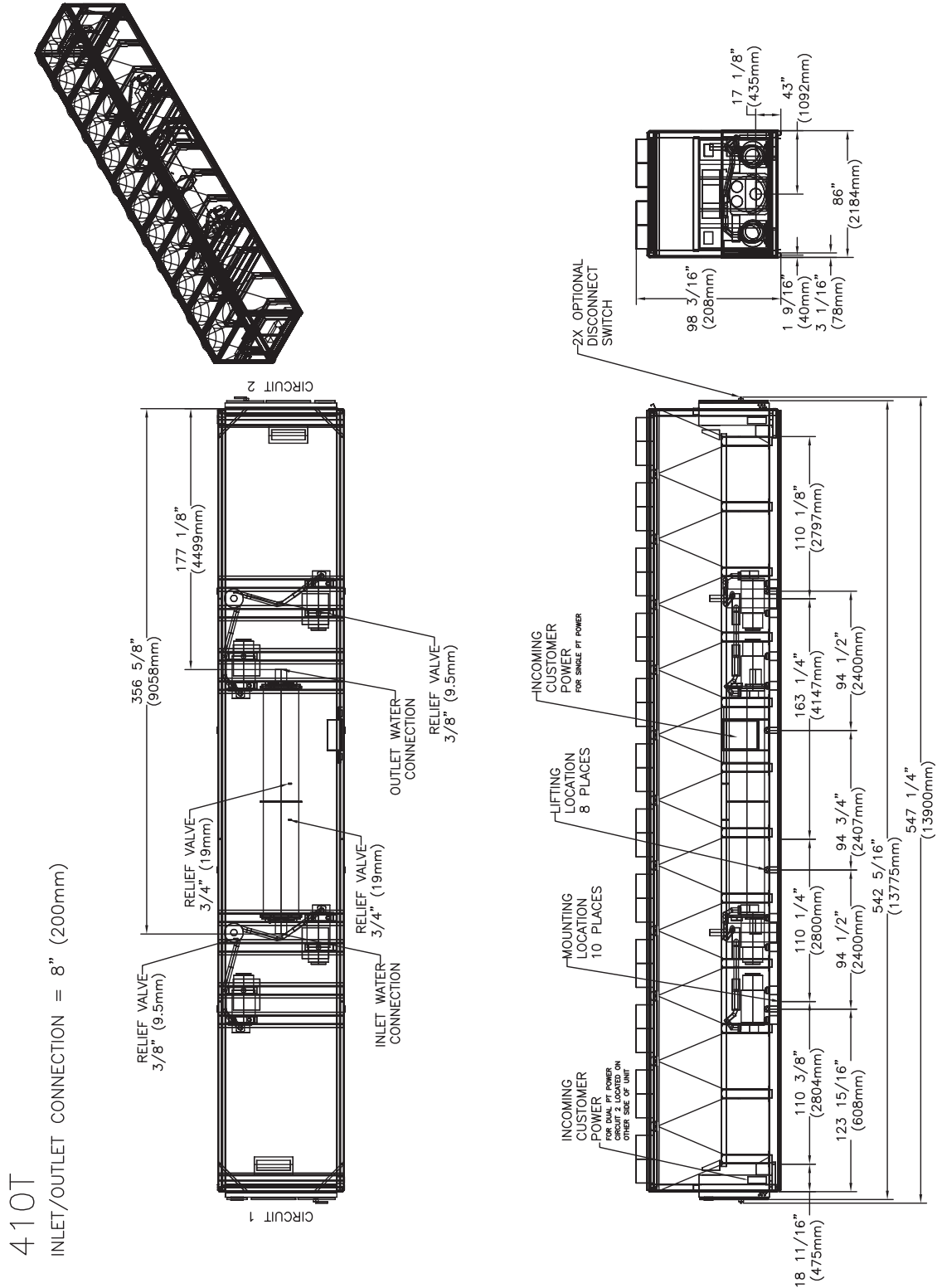
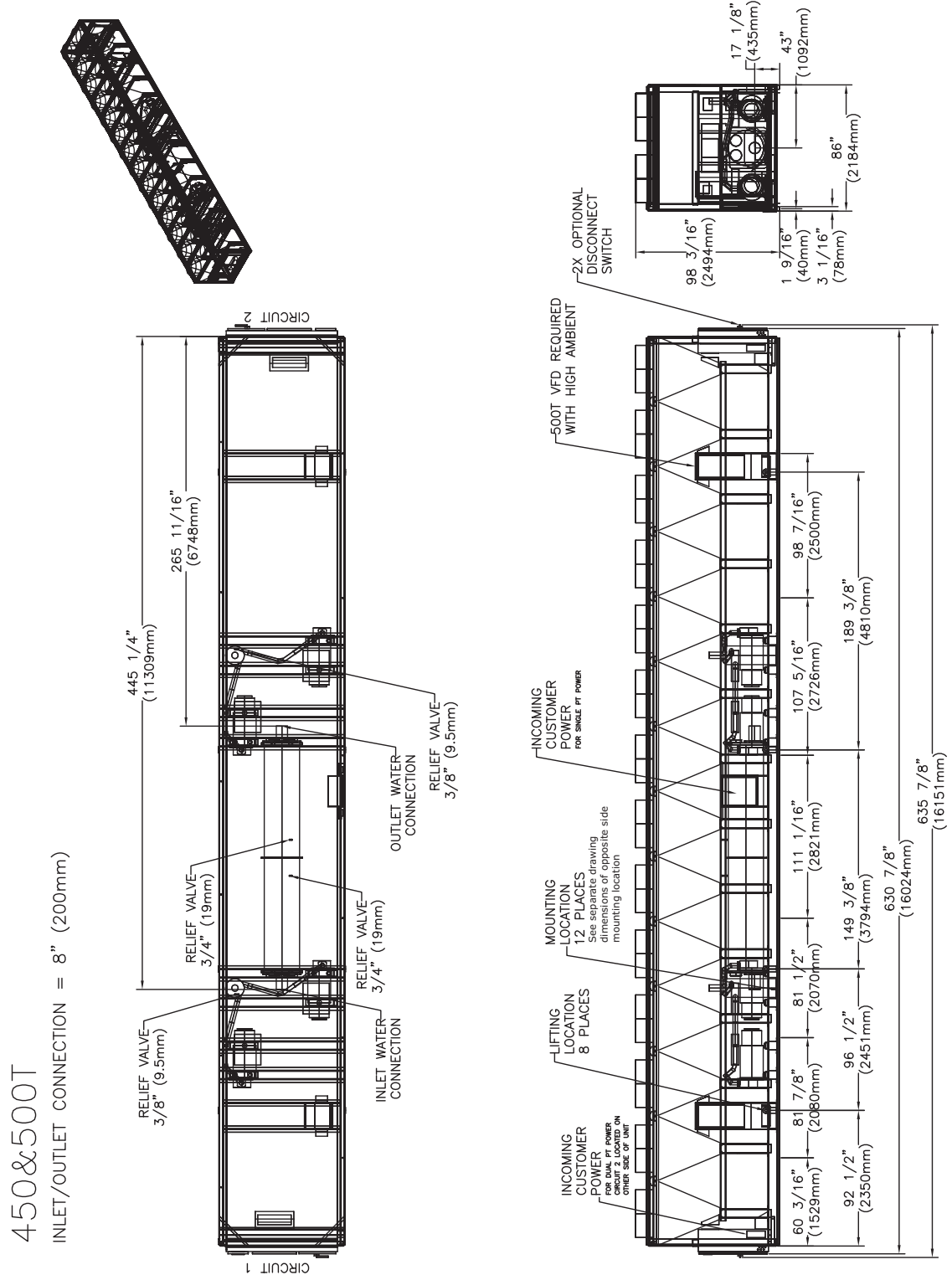


Figure 25. RTAF unit dimensions - 410 ton



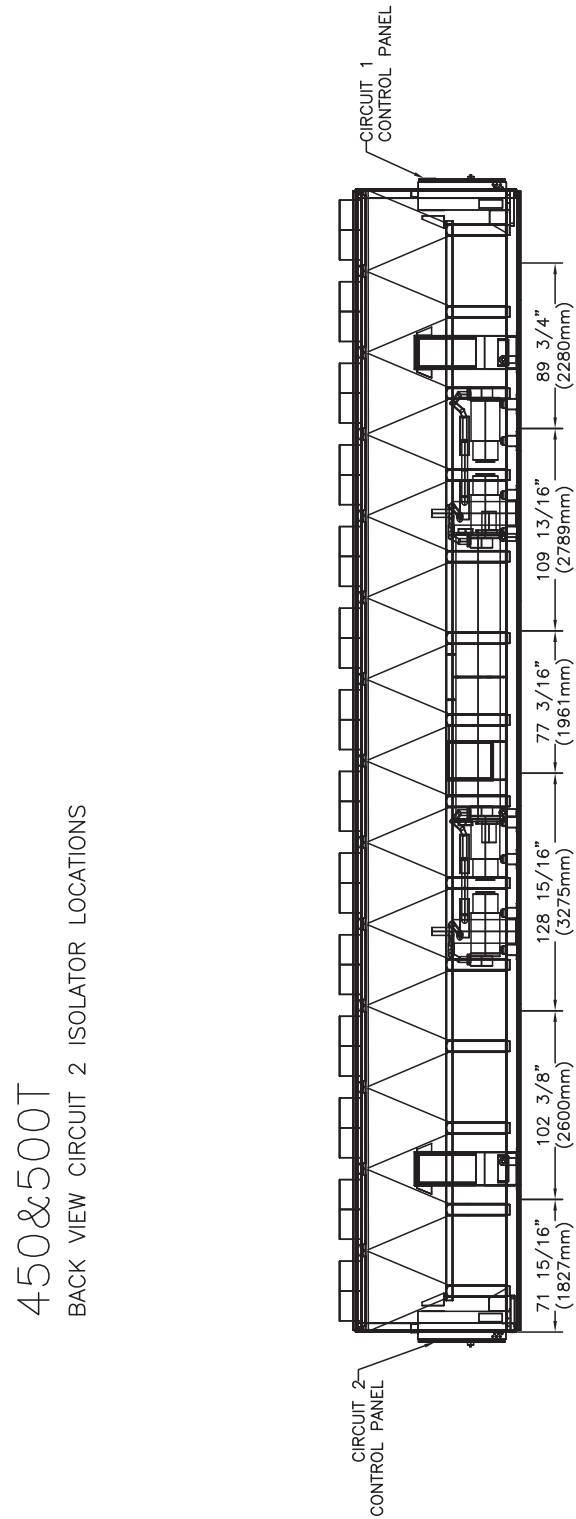
# Dimensions

Figure 26. RTAF unit dimensions - 450, 500 ton<sup>(a)</sup>



(a) Mounting locations shown are for circuit 1 only (front view of unit). See Figure 27, p. 45 for circuit 2 mounting locations (back view).

Figure 27. RTAF unit dimensions - 450, 500 ton, circuit 2 mounting point locations





# Weights

**Table 6. Unit weights**

Unit Size (tons)	Shipping Weight		Operating Weight	
	lb	kg	lb	kg
115	7974	3617	8091	3670
130	8071	3661	8203	3721
150	9467	4294	9628	4367
170	9497	4308	9669	4386
180	9821	4455	10002	4537
200	10829	4912	11012	4995
215	11155	5060	11355	5151
230	12549	5692	12829	5819
250	12962	5880	13242	6007
280	16705	7578	16838	7638
310	17228	7815	17367	7878
350	18177	8245	18375	8335
410	21199	9616	21411	9712
450	23569	10691	23794	10793
500	23669	10736	23907	10844



# Mechanical Specifications

## General

Units are leak and pressure tested at 385 psig high side, 220 psig low side, then evacuated and charged. All chillers are factory tested to confirm operation prior to shipment. Packaged units ship with a full operating charge of oil and refrigerant as standard. Units can also be shipped with a nitrogen charge if required.

Unit panels, structural elements and control boxes are constructed of galvanized steel and mounted on a bolted galvanized steel base. Unit panels, control boxes and the structural base are finished with a baked on powder paint. All paint meets the requirement for outdoor equipment of the US Navy and other federal government agencies.

Chiller is built and certified to UL2014 and Canadian safety standards.

## Refrigerant Circuit

Each unit has two refrigerant circuits, with one or two rotary screw compressors per circuit. Each refrigerant circuit includes compressor suction and discharge service valves, liquid line shut off valve, removable core filter, liquid line sight glass with moisture indicator, charging port, high pressure and low pressure safety valve and electronic expansion valve. Fully modulating compressor and electronic expansion valve provide variable capacity modulation over the entire operating range.

## Evaporator

The evaporator is a tube-in-shell heat exchanger design with internally and externally finned copper tubes roller expanded into the tube sheets. The evaporator is designed, tested and stamped in accordance with the ASME Boiler and Pressure Vessel Code Section VIII for a refrigerant side working pressure of 200 psig. The evaporator is designed for a water side working pressure of 150 psig. Waterboxes are provided in a 2 pass configuration on units up to a nominal size of 250 tons. Evaporators for 280 to 500 ton units utilized a 1-pass configuration. Each waterbox includes a vent, a drain and fittings for temperature control sensors.

Standard water connections are grooved for victaulic style pipe couplings, with groove to flange style adapters available. Evaporators are insulated with 0.75 inch closed cell insulation.

Evaporator water heaters with thermostat are provided to help protect the evaporator from freezing at ambient temperatures down to -4°F (-20°C).

**Note:** A separate field supplied low voltage power source is required to power the evaporator freeze protection.

A factory installed flow switch is installed on the supply water box in the evaporator inlet connection.

## Condenser and Fans

The air-cooled microchannel condenser coils use all aluminum brazed fin construction. The condenser coil has an integral subcooling circuit. The maximum allowable working pressure of the condenser is 350 psig. Condensers are factory proof and leak tested at 525 psig. Coils can be cleaned with high pressure water.

Direct-drive vertical-discharge airfoil condenser fans are dynamically balanced. The condenser fan motors are permanent magnet motors with integrated drive to provide variable speed fan control for all fans.

Sintesis™ chillers are equipped with EC condenser fan motors with permanently lubricated ball bearings and external overload and overcurrent protection.



## Mechanical Specifications

---

### Compressor and Lube Oil System

The rotary screw compressor is semi-hermetic, direct drive, with capacity control via an adaptive frequency drive, rolling element bearings, differential refrigerant pressure oil pump and oil heater. The motor is a suction gas cooled, hermetically sealed, two-pole squirrel cage induction motor.

Oil separator is provided separate from the compressor. Oil filtration is provided internal to the compressor. Check valves in the compressor discharge and lube oil system are also provided.

### Unit Controls

All unit controls are housed in an outdoor rated weather tight enclosure per UL2014 with removable plates to allow for customer connection of power wiring and remote interlocks. All controls, including sensors, are factory mounted and tested prior to shipment.

Microcomputer controls provide all control functions including startup and shut down, leaving chilled water temperature control, evaporator flow proving, compressor staging and speed control, electronic expansion valve modulation, condenser fan sequencing and speed control, anti-recycle logic, automatic lead/lag compressor starting, load limiting and chilled water pump control.

### Tracer UC800

The Tracer™ UC800 unit control module, utilizing Adaptive Control™ microprocessor, automatically takes action to avoid unit shut-down due to abnormal operating conditions associated with low refrigerant pressure, high condensing pressure and motor current overload. Should the abnormal operating condition continue until a protective limit is violated, the unit will be shut down.

Unit protective functions of the UC800 include: low evaporator refrigerant pressure, high condenser refrigerant pressure, low oil flow, critical sensor or detection circuit faults, current overload, high compressor discharge temperature, communications lost between modules, electrical distribution faults, phase loss, phase imbalance, phase reversal, external and emergency stop, momentary power loss, under/over voltage and loss of evaporator water flow.

UC800 provides an optional flexible alarm or chiller status indication to a remote location through a hard wired interface to a dry contact closure. Four relays are available for this function.

### Tracer Adaptiview TD7 Display

A full color Tracer AdaptiView™ TD7 touch screen display indicates all important unit and circuit parameters, in logical groupings on various screens. The parameters including chilled water set point, leaving chilled water temperature, demand limit set point, evaporator and condenser refrigerant temperatures and pressures, compressor and fan speeds, and all pertinent electrical information. The display also provides "on screen" trending graphs of predefined parameters as well as customizable trend graphs based on user defined parameters from a list of all available parameters. The display also provides indication of the chiller and circuits' top level operating modes with detailed sub-mode reports available with a single key press, as well as diagnostics annunciation and date and time stamped diagnostic history. The color display is fully outdoor rated, and, can be viewed in full daylight without opening any control panel doors.

- Outdoor capable:
  - UV Resistant Touchscreen
  - -40C to 70C Operating Temperature
  - IP56 rated (Power Jets of Water from all directions)
- RoHS Compliant
- UL 916 Listed
- CE Certification



- Emissions: EN55011 (Class B)
- Immunity: EN61000 (Industrial)
- Display:
  - 7" diagonal
  - 800x480 pixels
  - TFT LCD @ 600 nits brightness
  - 16 bit color graphic display
- Display Features:
  - Alarms
  - Reports
  - Chiller Settings
  - Display Settings
  - Service Settings
  - Graphing
  - Global Application with Support for 26 Languages

## **Adaptive Frequency Drive (AFD) Compressor Starter**

Sintesis chillers utilize Trane's TR200 series of Adaptive Frequency™ Drive (AFD) technology for controlling the compressors. TR200 AFD is a family of adaptive frequency drives specifically designed for Trane applications. AFD data such as drive status, temperatures, modes and diagnostic information are accessible via a remote mounted keypad and through the Trane Drive Utility service tool.

The AFD contains technology that enables the drive to last the lifetime of the chiller and to operate with less downtime. The technology enables operation on various power systems including alternative energy sources. AFD will protect itself and the compressor motor from overcurrent, low or high line voltage, phase loss, incoming phase imbalance, and over-temperature due to loss of panel ventilation.

The AFD incorporates improved serviceability and troubleshooting tools.

The drive is air-cooled with ventilation fan in the panel.

## **Chilled Water Reset**

Control logic and factory installed sensors are provided to reset leaving chilled water temperature. The set point can be reset based on ambient temperature or return evaporator water temperature.

## **Factory Mounted Flow Proving and Flow Control**

The factory installed evaporator water flow switch is provided with the control logic and relays to turn the chilled water flow on and off as the chiller requires for operation and protection. This function is a requirement on the Sintesis™ chiller.



# Options

## Application options

### Ice Making

The ice making option provides special control logic to handle low temperature brine applications (less than 40°F [4.4°C] leaving evaporator temperature) for thermal storage applications.

### Low Temperature Brine

Low temperature option provides special control logic and oil cooler is installed to handle low temperature brine applications including part load conditions below 40°F (4.4°C) leaving evaporator temperature.

### Low Ambient

The low ambient option adds unit controls to allow start and operation when the unit works with ambient temperatures between 14°F(-10°C) and -4°F (-20°C). High side of ambient range remains at 115°F (46°C).

### High Ambient

The high ambient option adds unit controls, oil coolers and oversized electrical components to allow start and operation up to ambient temperatures of 130°F(54.4°C) operation. Low side of ambient range remains at 14°F (-10°C).

### Wide Ambient

The wide ambient option combines the features of low and high ambient options for an ambient range of -4° to 130°F (-20 to 54.4°C).

### Evaporator Turbulators

Turbulators will be installed internal to the tubes to promote turbulent flow for the following:

- Glycol solutions
- Low flow/high evaporator temperature deltas
- Low temperature applications.

### Ice Making Contact

UC800 provides an output contact closure that can be used as a signal to the system that ice building is in operation. This relay will be closed when ice building is in progress and open when ice building has been terminated by either UC800 or the remote interlock. It is used to signal the system changes required to convert to and from ice making.

## Electrical options

### Circuit Breaker

A HACR rated molded case capacity circuit breaker (UL approved) is available. Circuit breaker can also be used to disconnect chiller from main power with a through-the-door handle. External operator handle is lockable.

### High Short Circuit Current Rating

A higher short circuit current rating offers a greater measure of safety for what the starter panel enclosure is able to withstand in the event of an explosion caused by a short circuit.

## Control options

### BACnet Communications Interface

Allows the user to easily interface with BACnet® via a single twisted pair wiring to a factory installed and tested communication board.

### LonTalk (LCI-C) Communications Interface

Provides the LONMARK® chiller profile inputs/outputs for use with a generic building automation system via a single twisted pair wiring to a factory installed and tested communication board.

### ModBus Communications Interface

Allows the user to easily interface with ModBus™ via a single twisted pair wiring to a factory installed and tested communication board.

### Remote Input Options

UC800 accepts either a 2-10 VDC or a 4-20mA input signal to remotely adjust leaving water temperature and/or demand limit setpoint.

### Remote Output Options

Permits programmable relay alarms and/or percent capacity outputs.

## Other Options

### Elastomeric Isolators

Elastomeric Isolators provide isolation between chiller and structure to help eliminate vibration transmission.

### Convenience Outlet

Provides a 15 amp, 115V (60 Hz) convenience outlet on the unit.

**Note:** An additional field-supplied power connection must be provided to power the convenience outlet.

### Flanged Water Connection Kit

Consists of raised faced flanges to convert grooved pipe water connections to flanged water connections. The victaulic-to-flange adapter will be shipped with the chiller.

### Containerization Shipping Package

Pull rings are bolted to each side of the formed sheet metal unit base rail in order to pull the unit out of the shipping container once it reaches its destination.

### Shipping Tarp

The unit will be covered at the factory with a PVC coated polyester tarp that is tied to the chiller base to help protect the chiller from debris during shipment especially in the winter months and on shipping vessels. This option may also be helpful if the chiller will be stored at the jobsite before use.



Trane optimizes the performance of homes and buildings around the world. A business of Ingersoll Rand, the leader in creating and sustaining safe, comfortable and energy efficient environments, Trane offers a broad portfolio of advanced controls and HVAC systems, comprehensive building services, and parts. For more information, visit [www.Trane.com](http://www.Trane.com).

Trane has a policy of continuous product and product data improvement and reserves the right to change design and specifications without notice.