



Valley View Community Unit School District

Valley View Community Unit School district faced dual pressures of population growth and aging schools. The community voted to okay a referendum and the district secured a state grant to fund an extensive building and remodeling project amounting to more than \$140 million.

The scope included construction of Bolingbrook High school, renovation of Romeoville High School, construction of a new field house and a controls retrofit to 15 existing schools. The schools had aging systems that were non-functioning or difficult to operate.



Bolingbrook High School under construction

Based on the long-term relationship between Trane and the district, including much HVAC equipment and two schools using Trane Integrated Comfort™ systems (ICS) concept, Trane was the leading contender for the building systems and HVAC portions of the work.

But there was competition, and the district decision makers had concerns about the ability of Trane's Tracer Summit™ system to integrate with Cutler Hammer lighting controls throughout the district.

To overcome objections, Trane set up a working demonstration at the school district headquarters—proving that the Tracer Summit system can integrate with the Cutler Hammer lighting controls. The Trane team successfully demonstrated Trane's integration capabilities.

The school district soon sent a letter of intent, and Trane's strong relationship with the district further led to the successful mechanical contractor purchasing Trane equipment based on the district's preference for having both Trane equipment and controls.

The \$2.4 million building systems and HVAC project, for the southwest suburban Chicago school district, was awarded to Trane.

Working closely with Chicago Trane, the changeover was accomplished in less than one-half day per school. Six have been completed so far.

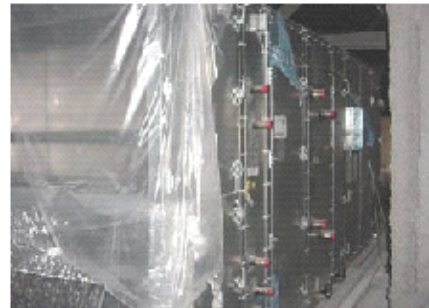
Chicago Trane provided a Tracer Summit building automation system to meet the district's desire for a technology platform using open standards that would address their needs today and in the future.



Trane Tracer Summit System

The Tracer Summit web server enables Web access for operating staff via the district local area network (LAN) and from offsite.

Chicago Trane subcontracted a high-quality communications/security firm to help fulfill the district's need for single-seat operation of building automation, card access, and security on one PC. Chicago Trane teamed with the local Tek Air supplier to meet the customer's need to integrate fume hoods with the building automation system.



Brand new custom air handling units

Trane HVAC equipment at Bolingbrook High includes CenTraVac™ chillers, custom air handling units, Series M Climate Changer™ air handlers, and VAV units.

Trane also brought to bear their building automations knowledge, which helped the design-build contractor do an award-winning construction process to get the new and upgraded schools online to respond to the district's needs."

Bolingbrook High School will open for students in the fall of 2004. Further controls updates in 15 schools in the district are also on the drawing board.



Artist's rendering of new high school

For more information about Trane's Trace Summit® System contact one of our controls engineers at the Chicago Trane office: 630.734.3200